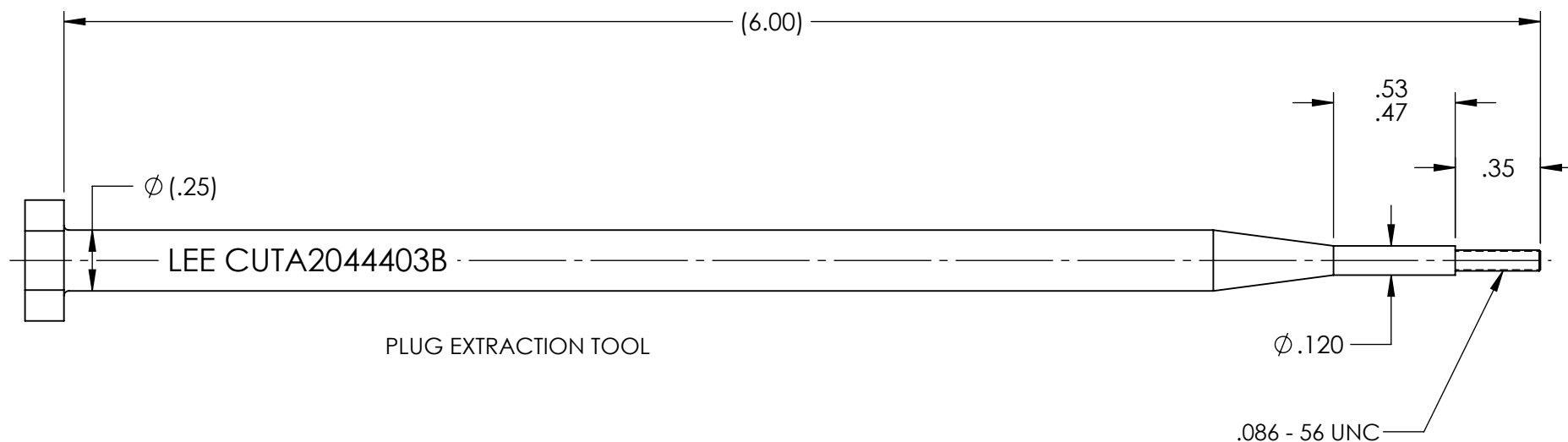
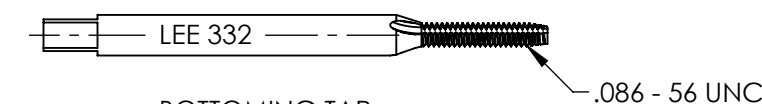


# CUTA0930113B

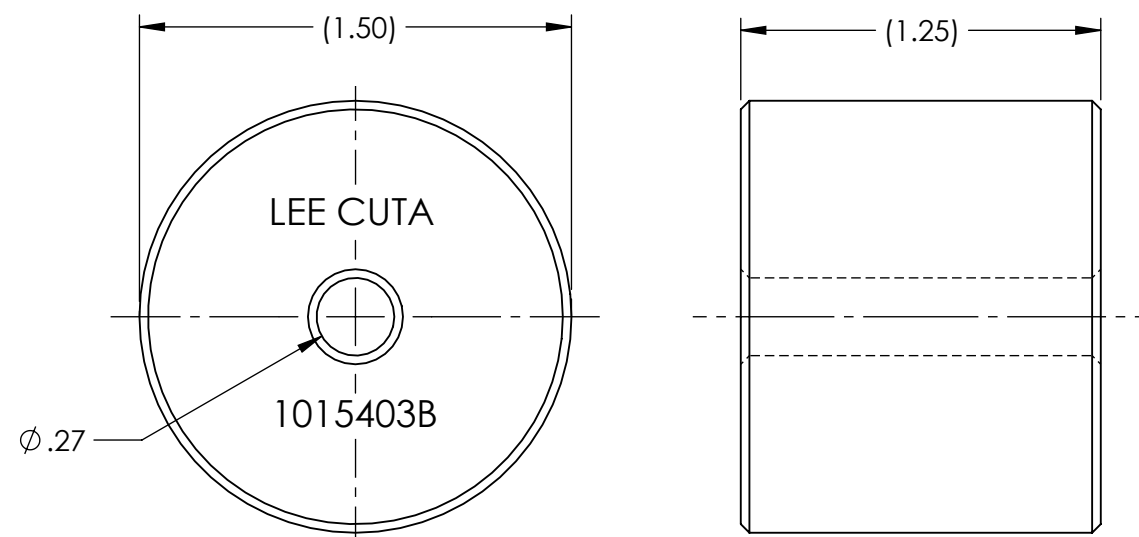
REVISIONS			
REV	DATE	BY	DESCRIPTION
A1	11-16-22	KD	INITIAL RELEASE



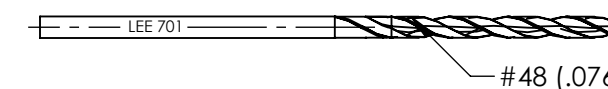
PLUG EXTRACTION TOOL



BOTTOMING TAP  
PLUG EXTRACTION  
(CUTA3325403B)



STRIKER



DRILL  
PIN EXTRACTION  
(CUTA7015403B)

**NOTES:**


1. USE DRILL CUTA7015403B TO REMOVE PIN (PLGA0936350A OR PLGA1036350A) COMPLETELY.
2. MINIMUM OF THREE THREADS OF ENGAGEMENT TO REMOVE PLUG.
3. EXTRACTION TOOL SET FOR PLGA0931350A AND PLGA1031350A.

WARNING-EXPORT CONTROLLED BY EAR [50 USC 2401], THIS DRAWING: EAR99  
PRODUCT/TECHNOLOGY CLASSIFICATION: EAR99/EAR99

**PROPRIETARY NOTICE**

This document contains confidential, trade secret information which is proprietary to The Lee Company, and is submitted upon the express condition that neither it, nor our products, will be used directly or indirectly in any way detrimental to the interests of The Lee Company, such as disclosure to others or replication of our products, and/or in violation of 18 U.S.C. 1905 (TSA), 5 U.S.C. 552 (FOIA), E.O. 12600 of 6/23/87, 18 U.S.C. 1832, and C.G.S.A. (CT) Chapter 625 sec. 35-50 thru 35-58.

CUTD0930113
REFERENCE

DWG. NO. CUTA0930113B	NOTES AND DIMENSIONS SHOWN HERE ON ARE FOR INSPECTION IDENTIFICATION ONLY. ALL MANUFACTURING RIGHTS RESERVED.	DRAWN	K D	11-16-2022	LEE TOOL SET, MP35N, EXTRACTION, .093		
	UNLESS OTHERWISE SPECIFIED EXT. COR. BREAK: INTERNAL FILLET R:  SURFACE FINISH ALL OVER DIMENSIONS ARE IN INCHES  TOLERANCES 2 PLACES 3 PLACES ANGLES ±.015 ±.005 ±5°	CHK'D	B W	01-09-2024			
		APP'D	R M	01-22-2024	 <b>THE LEE COMPANY</b> WESTBROOK, CT 06498		
		MATL	H.T.	FINISH			
				SCALE NONE		SHEET 1 OF 1	