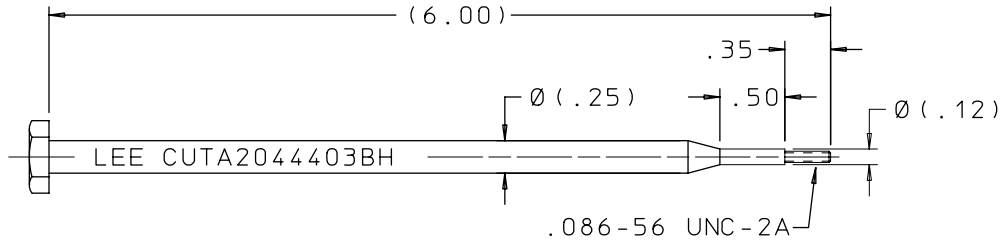
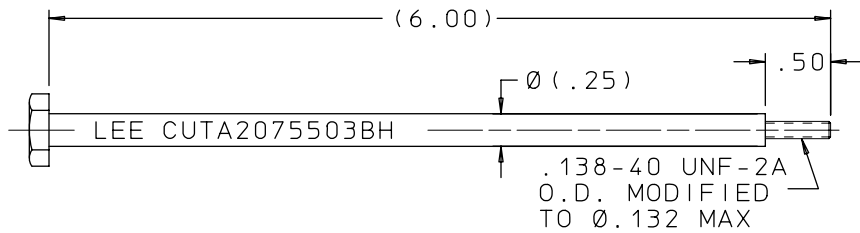


CUTA 1560 103B

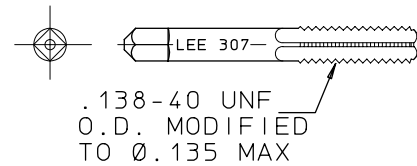
REV	DATE	BY	DESCRIPTION
A	08-11-76	KMS	INITIAL RELEASE
2	07-27-78	F P	ADDED REFERENCE
B	07-22-91	GMR	REDRAWN TO CAD; WAS WORD DRAWING



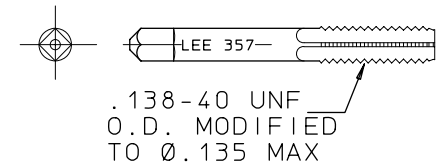
PIN EXTRACTION TOOL



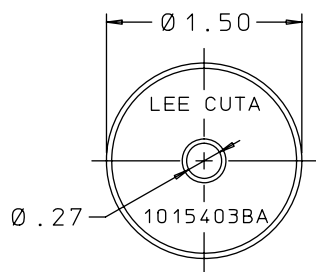
PLUG EXTRACTION TOOL



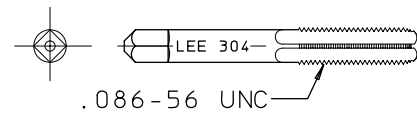
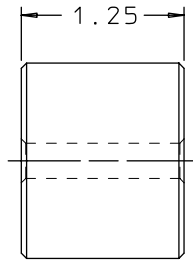
STARTER TAP
PLUG EXTRACTION
CUTA3075503B



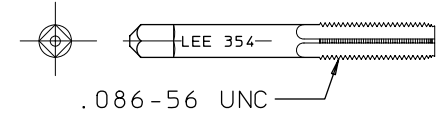
BOTTOMING TAP
PLUG EXTRACTION
CUTA3575503B



STRIKER



STARTER TAP
PIN EXTRACTION
CUTA3044403B



BOTTOMING TAP
PIN EXTRACTION
CUTA3544403B

PROPRIETARY ITEM

This document contains proprietary information and is submitted upon the express condition that the information contained herein will not be used directly or indirectly in any way detrimental to the interests of The Lee Company, and/or in violation of regulation DAR 7-104.9(a)(1 July 1974), et seq.

CUTD1560103

REFERENCE

DWG NO: CUTA1560103B	NOTES AND DIMENSIONS SHOWN HERE ON ARE FOR INSPECTION IDENTIFICATION ONLY. ALL MANUFACTURING RIGHTS RESERVED.	DRAWN BY: KMS	08-11-76	LEE TOOL SET EXTRACTION		
	EXTERNAL CORNER RAD: INTERNAL FILLET RAD:	CHK'D BY: ECB	08-12-76	THE LEE COMPANY WESTBROOK, CT 06498		
	SURFACE FINISH ✓ ALL OVER DIMENSIONS ARE IN INCHES	APP'D BY: G L	08-16-76	SIZE: B	CAGE CODE: 92555	DWG NO.: CUTA1560103B
	TOLERANCES 2 PLACES ±.015 3 PLACES ±.005 ANGLES ±5°	MAT:	H.T.:	REV: B		
	FINISH:	DWG SCALE: NONE		SHEET 1 OF 1		