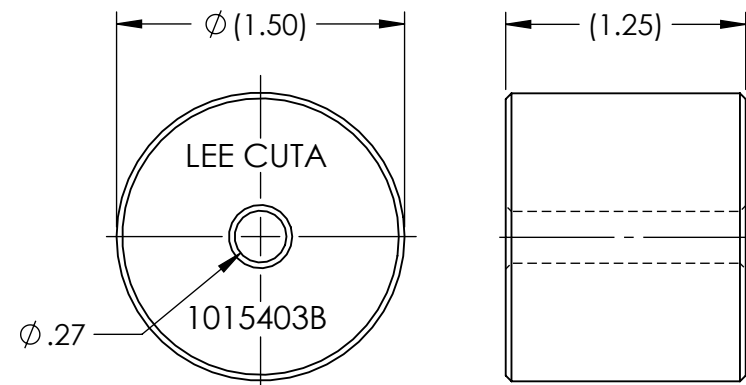
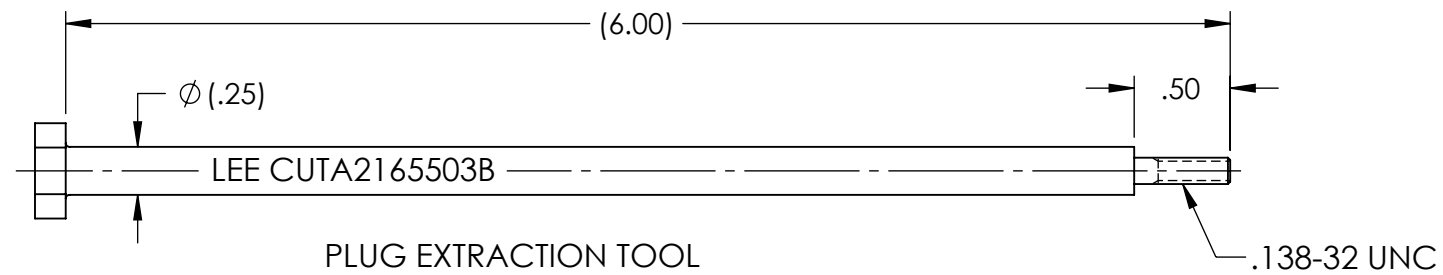
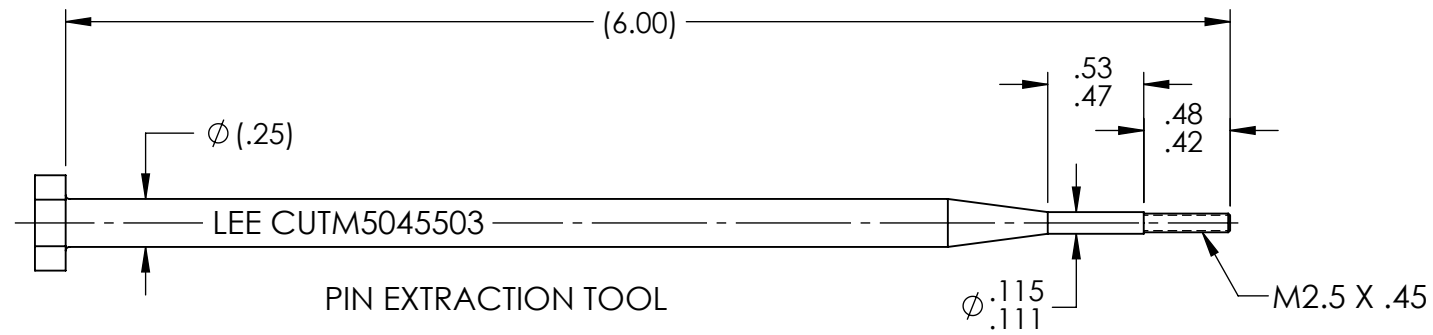
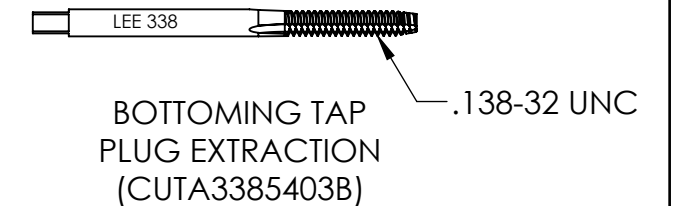
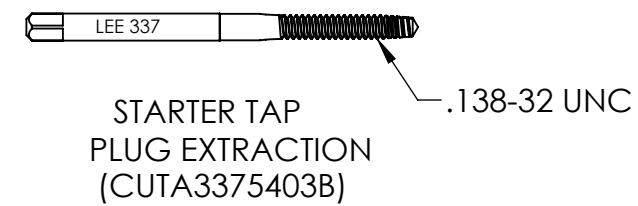
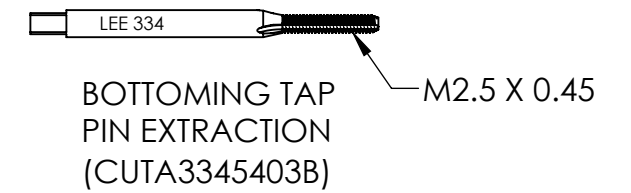
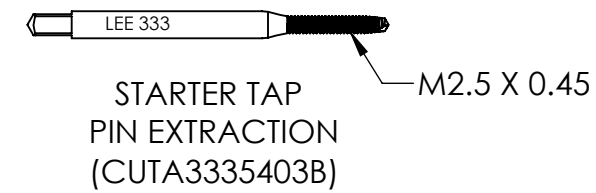
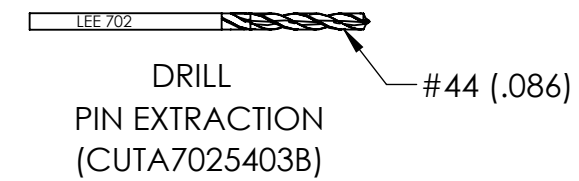


CUTA1560113B

REVISIONS			
REV	DATE	BY	DESCRIPTION
A1	12-27-22	KD	INITIAL RELEASE



STRIKER




NOTES:

- MINIMUM OF 5 THREADS OF ENGAGEMENT TO EXTRACT THE PIN AND 3 THREADS OF ENGAGEMENT TO EXTRACT THE PLUG.
- EXTRACTION TOOL SET FOR PLGA1561350A AND PLGA1661350A.

WARNING-EXPORT CONTROLLED BY: EAR [50 USC 2401], THIS DRAWING: EAR99
PRODUCT/TECHNOLOGY CLASSIFICATION: EAR99/EAR99

PROPRIETARY NOTICE
This document contains confidential, trade secret information which is proprietary to The Lee Company, and is submitted upon the express condition that neither it, nor our products, will be used directly or indirectly in any way detrimental to the interests of The Lee Company, such as disclosure to others or replication of our products, and/or in violation of 18 U.S.C. 1905 (TSA), 5 U.S.C. 552 (FOIA), E.O. 12600 of 6/23/87, 18 U.S.C. 1832, and C.G.S.A. (CT) Chapter 625 sec. 35-50 thru 35-58.

CUTD1560113
REFERENCE

DWG. NO. CUTA1560113B	NOTES AND DIMENSIONS SHOWN HERE ON ARE FOR INSPECTION IDENTIFICATION ONLY. ALL MANUFACTURING RIGHTS RESERVED.	DRAWN	K D	12-27-2022	LEE TOOL SET, MP35N, EXTRACTION, .156		
	UNLESS OTHERWISE SPECIFIED EXT. COR. BREAK: INTERNAL FILLET R: SURFACE FINISH ALL OVER DIMENSIONS ARE IN INCHES TOLERANCES 2 PLACES 3 PLACES ANGLES ±.015 ±.005 ±5°	CHK'D	B W	01-19-2024			
		APP'D	R M	02-05-2024	 THE LEE COMPANY WESTBROOK, CT 06498		
		MATL	H.T.	FINISH			
				SCALE NONE		SHEET 1 OF 1	