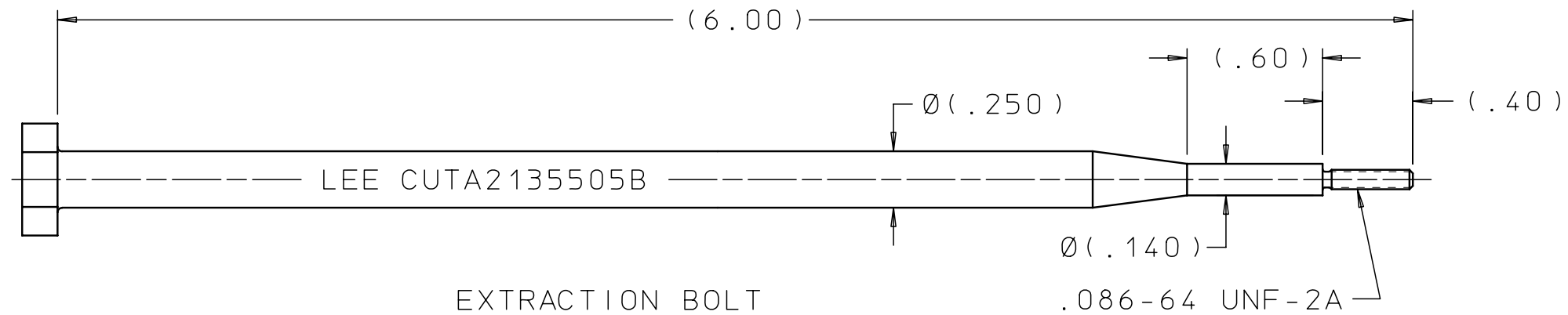
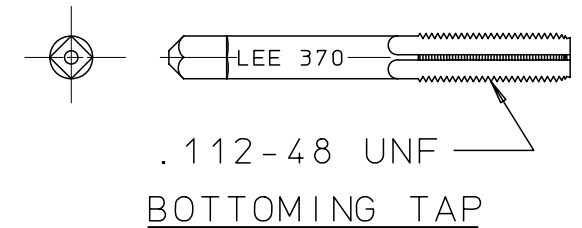


CUTA1566205B

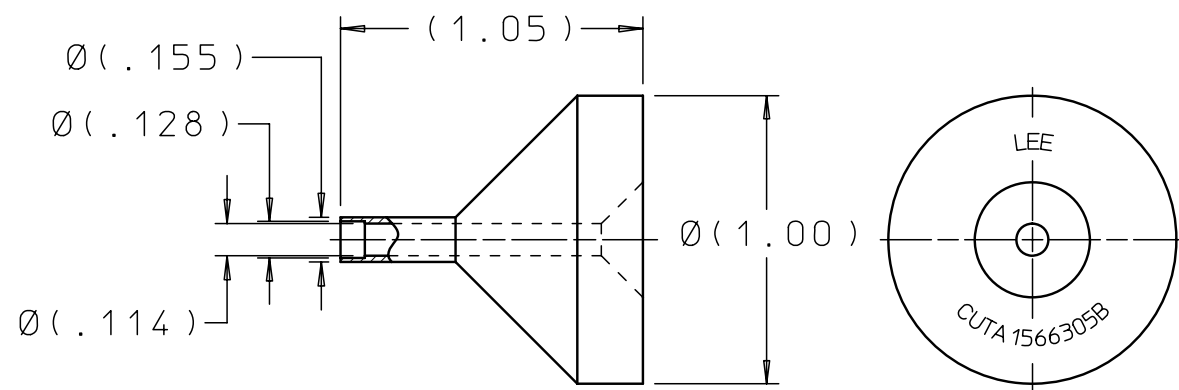
| REV | DATE | BY | DESCRIPTION |
|-----|----------|----|--------------|
| A2 | 03-18-11 | MC | DRAWN TO CAD |



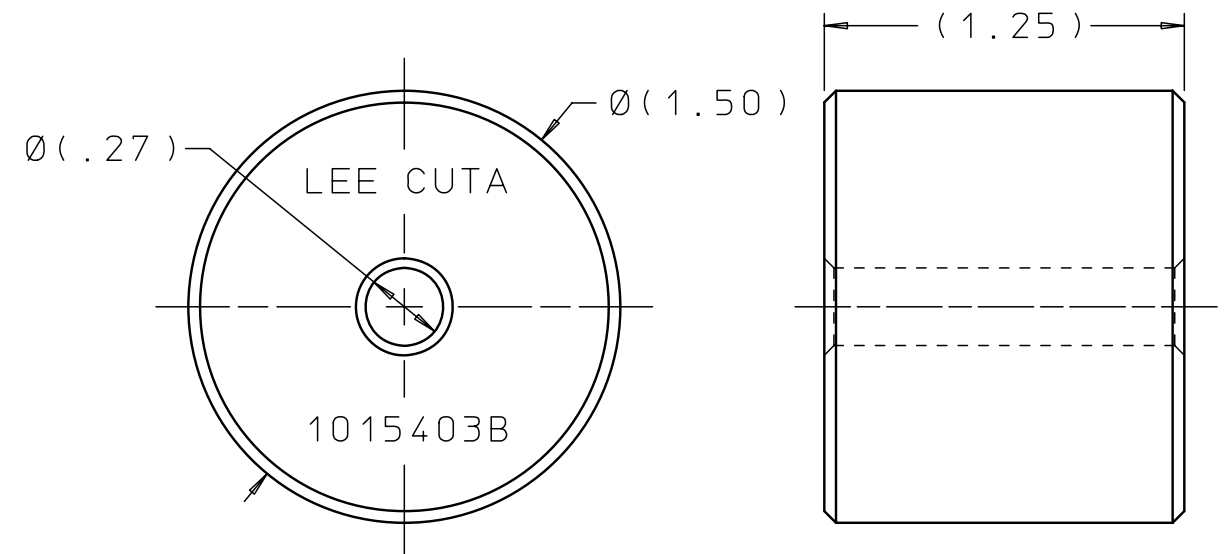
EXTRACTION BOLT



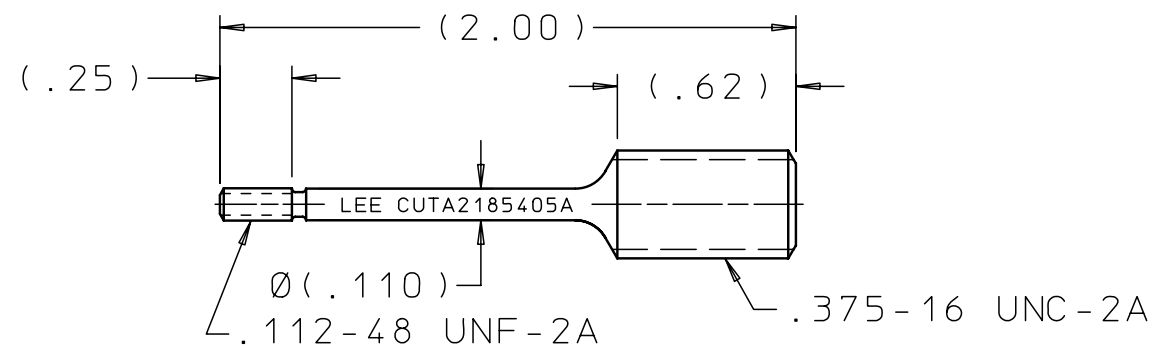
BOTTOMING TAP



EXTRACTION SLEEVE



STRIKER



STUD

NOTES:

- FOR RFO PLUG EXTRACTION SEE THE LEE COMPANY PROCESS SPECIFICATION 203 SECTION IV.

PROPRIETARY ITEM

This document contains proprietary information and is submitted upon the express condition that the information contained herein will not be used directly or indirectly in any way detrimental to the interests of The Lee Company, and/or in violation of regulation DAR 7-104.9(a)(1 July 1974), et seq.

CUTD1566205
REFERENCE

| | | | | | | | |
|----------------------|---|--|---------------|----------|--|------------------|-----------------------|
| DWG NO: CUTA1566205B | NOTES AND DIMENSIONS SHOWN HERE ON ARE FOR INSPECTION IDENTIFICATION ONLY. ALL MANUFACTURING RIGHTS RESERVED. | | DRAWN BY: DFW | 10-05-82 | LEE PLUG EXTRACTION SET .156 RFO | | |
| | EXTERNAL CORNER RAD: INTERNAL FILLET RAD: | | CHK'D BY: RJG | 03-31-83 | THE LEE COMPANY WESTBROOK, CT 06498 | | |
| | SURFACE FINISH ✓ ALL OVER DIMENSIONS ARE IN INCHES | | APP'D BY: SEA | 03-31-83 | SIZE: B | CAGE CODE: 92555 | DWG NO.: CUTA1566205B |
| | TOLERANCES 2 PLACES ±.015 3 PLACES ±.005 ANGLES ±5° | | MAT: | H.T.: | FINISH: | DWG SCALE: NONE | SHEET 1 OF 1 |