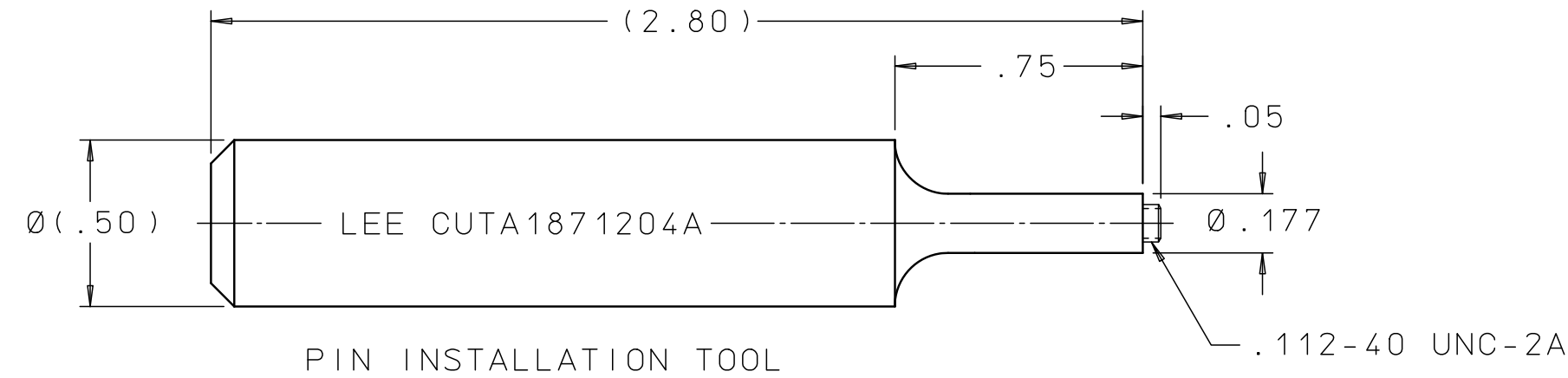
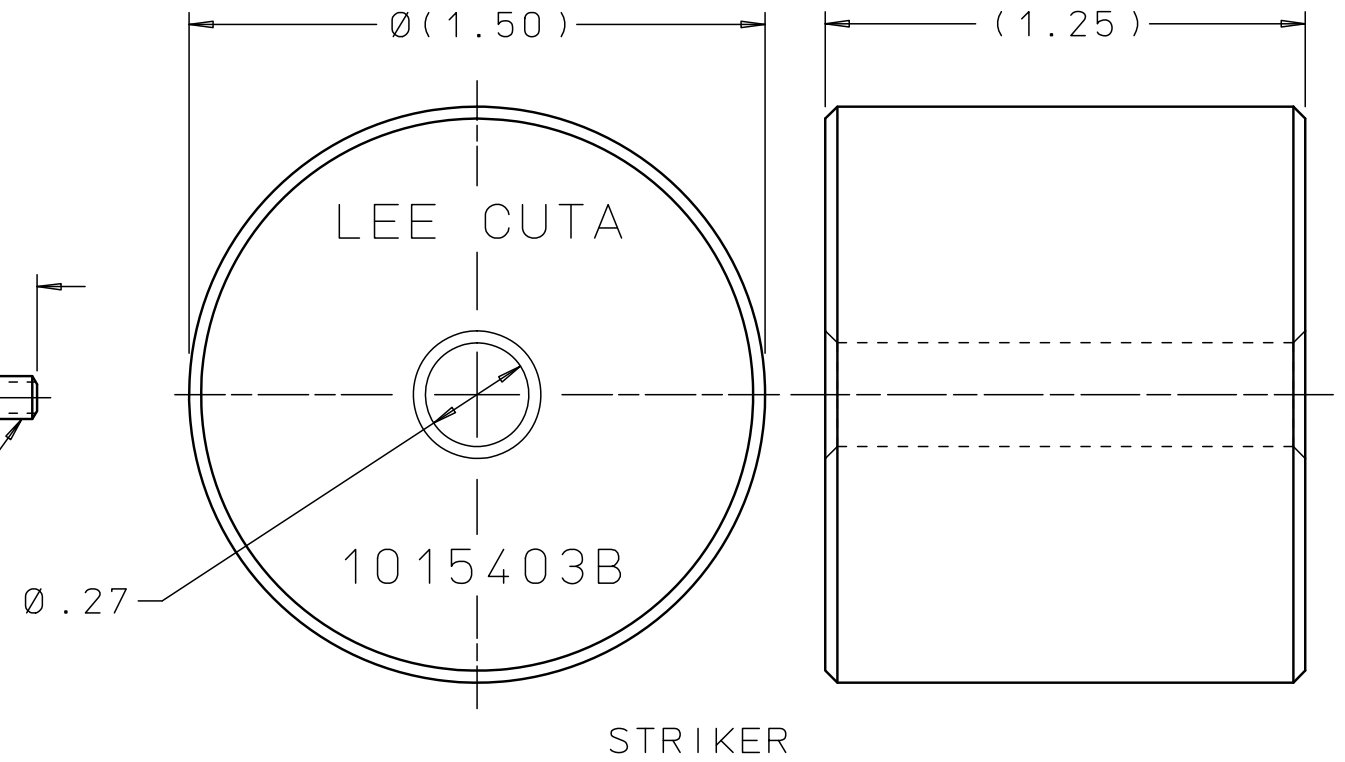
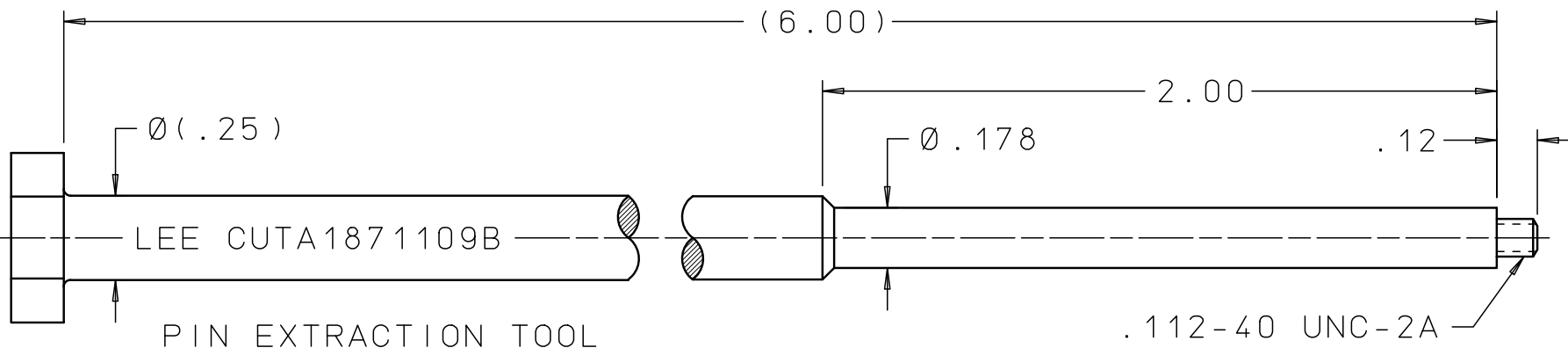
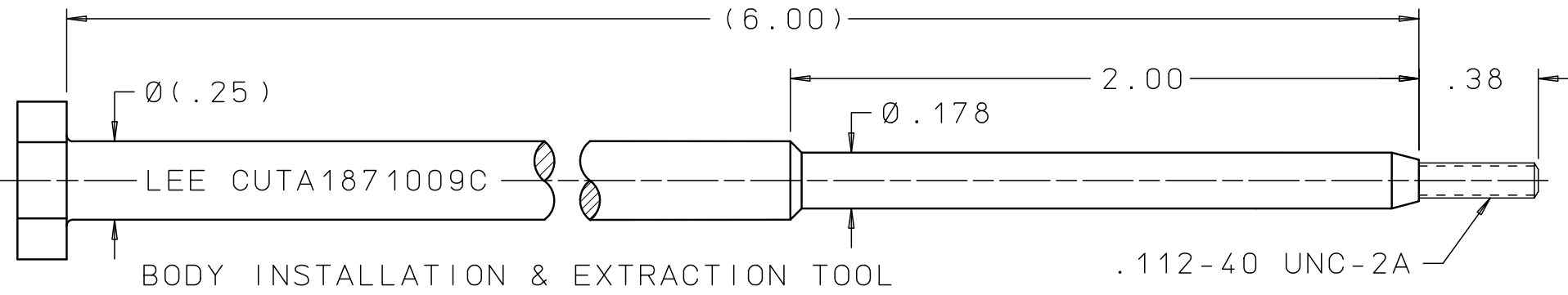


CUTA1870109C

REV	DATE	BY	DESCRIPTION
B2	02-12-08	MC	REMOVED REV LETTERS FROM TOOLS.
3	07-14-10	KD	BODY TOOL: UPDATED HEX. ADDED $\emptyset(.25)$ . PIN EXTRACT TOOL: UPDATED HEX, ADDED $\emptyset(.25)$ . PIN INSTAL TOOL: $\emptyset(.50)$ WAS $\emptyset.50$ , (2.80) WAS 2.80. STRIKER: (1.25) WAS 1.25 & $\emptyset(1.50)$ WAS $\emptyset1.50$ .
C	02-21-12	KD	BODY INST & EXTR TOOL; REMOVED HEX. ADDED 2 FLATS. PIN EXTR TOOL; REMOVED HEX. ADDED 2 FLATS.



INSTALLATION AND EXTRACTION SET FOR:  
 .187-.197 LEE HIGH PRESSURE BENDER.  
 .187-.197 LEE HIGH PRESSURE VISCO.

**PROPRIETARY ITEM**

This document contains proprietary information and is submitted upon the express condition that the information contained herein will not be used directly or indirectly in any way detrimental to the interests of The Lee Company, and/or in violation of regulation DAR 7-104.9(a)(1 July 1974). et seq.

CUTD0101430  
 REFERENCE

DWG NO: CUTA1870109C

NOTES AND DIMENSIONS SHOWN HERE ON ARE FOR INSPECTION IDENTIFICATION ONLY. ALL MANUFACTURING RIGHTS RESERVED.

EXTERNAL CORNER RAD:  
 INTERNAL FILLET RAD:

SURFACE FINISH  $\checkmark$  ALL OVER  
 DIMENSIONS ARE IN INCHES

TOLERANCES  
 2 PLACES  $\pm .015$  3 PLACES  $\pm .005$  ANGLES  $\pm 5^\circ$

DRAWN BY: S B 12-12-85

CHK'D BY: J B 12-23-85

APPD BY: SEA 03-04-86

MAT:

H.T.:

FINISH:

LEE TOOL SET  
 INSTALLATION AND EXTRACTION

**LEE** THE LEE COMPANY  
 WESTBROOK, CT 06498

SIZE	CAGE CODE	DWG NO.	REV
B	92555	CUTA1870109C	C

DWG SCALE: NONE SHEET 1 OF 1