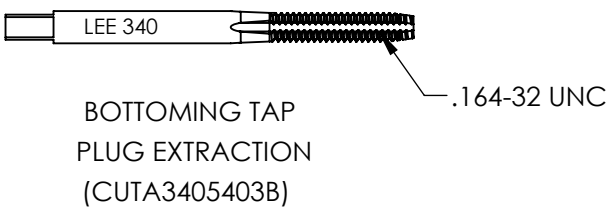
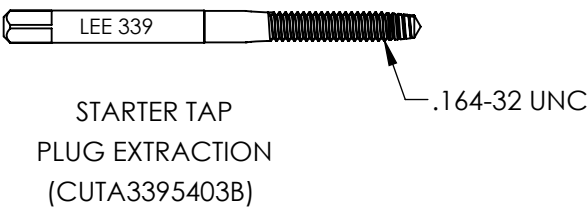
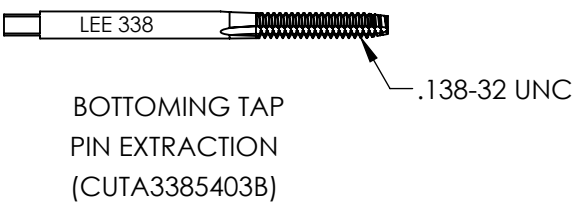
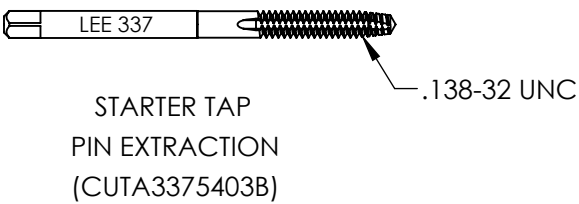
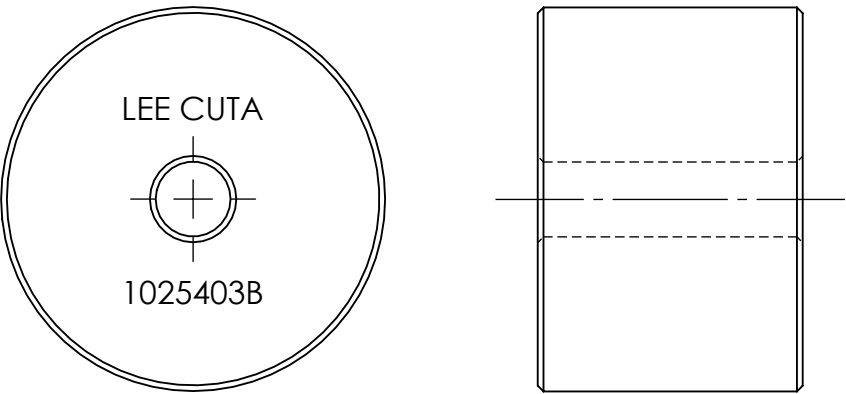
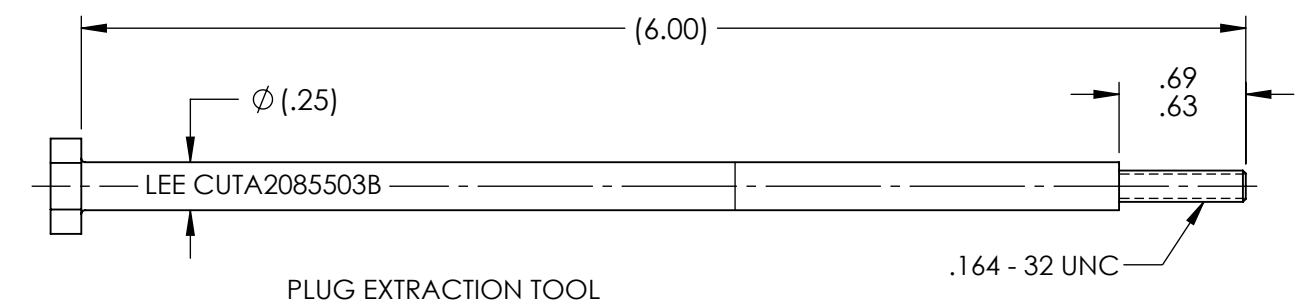
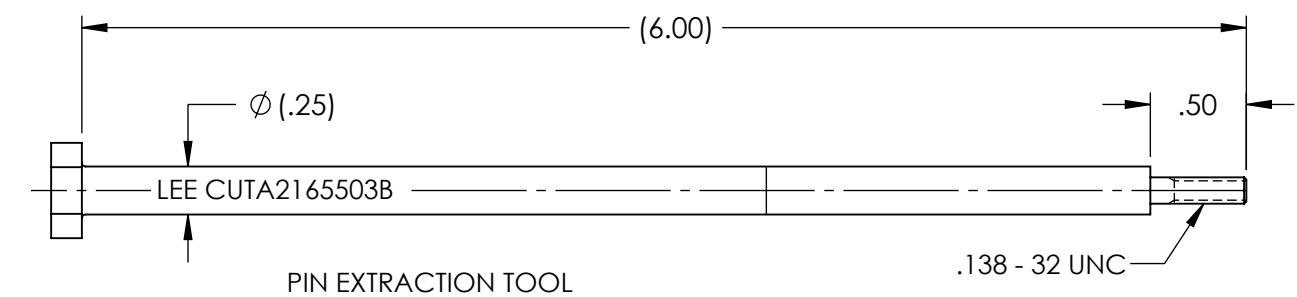


CUTA1870113B

REVISIONS			
REV	DATE	BY	DESCRIPTION
A1	12-22-22	KD	INITIAL RELEASE

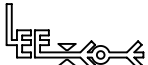


- NOTES:
- IT IS RECOMMENDED TO DRILL THROUGH THE PIN (APPROXIMATE DEPTH OF .181) TO REACH MINIMUM NUMBER OF THREADED ENGAGEMENT.
  - MINIMUM OF 2.5 THREADS OF ENGAGEMENT TO EXTRACT PIN AND 3 THREADS OF ENGAGEMENT TO EXTRACT THE PLUG.
  - EXTRACTION TOOL SET FOR PLGA1871350A AND PLGA1971350A.

WARNING-EXPORT CONTROLLED BY: EAR [50 USC 2401], THIS DRAWING: EAR99  
PRODUCT/TECHNOLOGY CLASSIFICATION: EAR99/EAR99

**PROPRIETARY NOTICE**  
This document contains confidential, trade secret information which is proprietary to The Lee Company, and is submitted upon the express condition that neither it, nor our products, will be used directly or indirectly in any way detrimental to the interests of The Lee Company, such as disclosure to others or replication of our products, and/or in violation of 18 U.S.C. 1905 (TSA), 5 U.S.C. 552 (FOIA), E.O. 12600 of 6/23/87, 18 U.S.C. 1832, and C.G.S.A. (CT) Chapter 625 sec. 35-50 thru 35-58.

CUTD1870113
REFERENCE

DWG. NO. CUTA1870113B	NOTES AND DIMENSIONS SHOWN HERE ON ARE FOR INSPECTION IDENTIFICATION ONLY. ALL MANUFACTURING RIGHTS RESERVED.	DRAWN	K D	12-22-2022	LEE TOOL SET, MP35 EXTRACTION, .187			
		CHK'D	B W	01-22-2024				
		APP'D	R M	01-25-2024				
	UNLESS OTHERWISE SPECIFIED  EXT. COR. BREAK: INTERNAL FILLET R:	MAT'L			 THE LEE COMPANY WESTBROOK, CT 06498			
		H.T.						
	SURFACE FINISH ALL OVER DIMENSIONS ARE IN INCHES  TOLERANCES 2 PLACES 3 PLACES ANGLES ±.015 ±.005 ±5°	FINISH			SIZE B	CAGE CODE 92555	DWG. NO. CUTA1870113B	REV A1
					SCALE NONE		SHEET 1 OF 1	