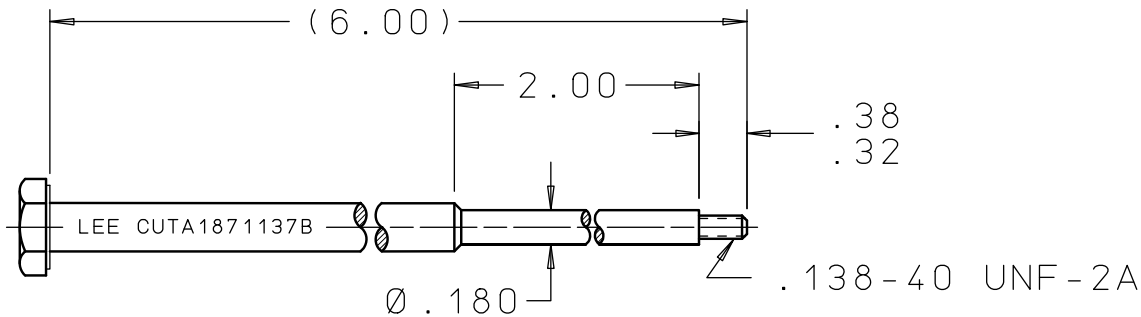
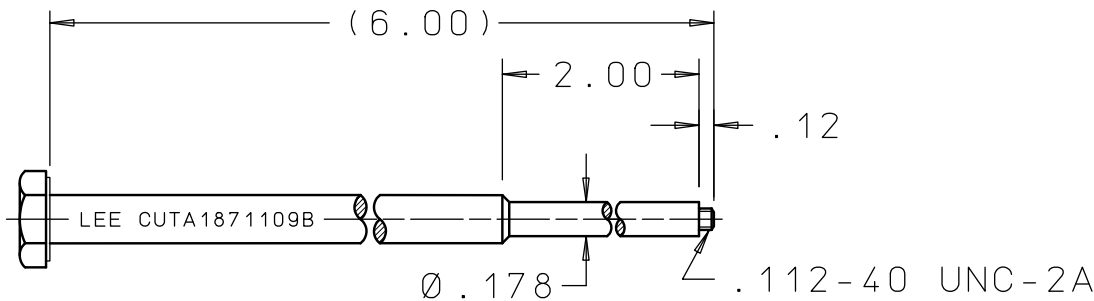


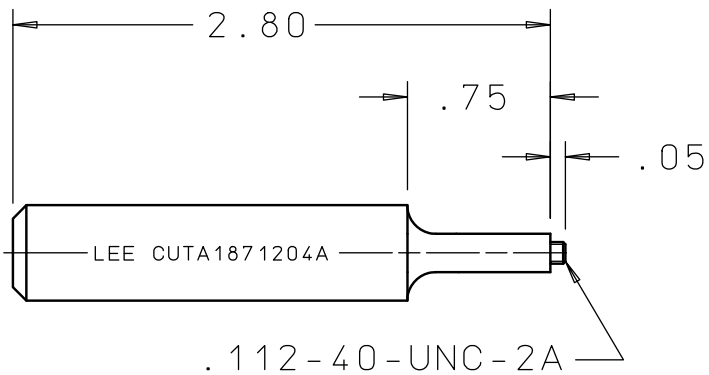
CUTA1870137C



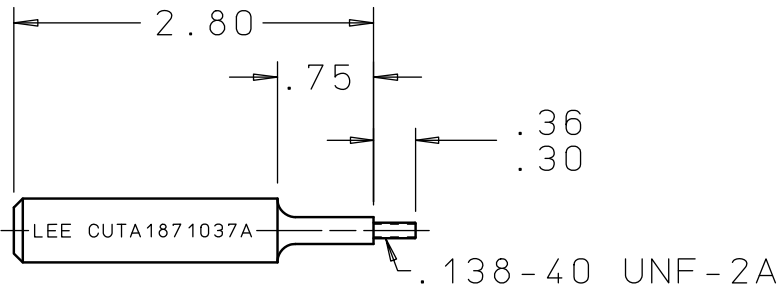
BODY EXTRACTION TOOL



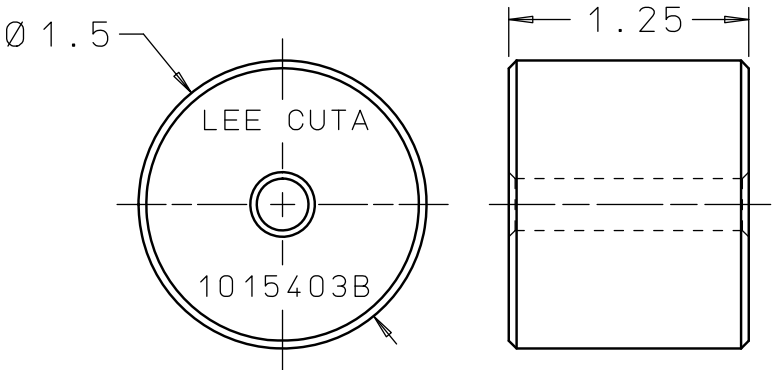
PIN EXTRACTION TOOL



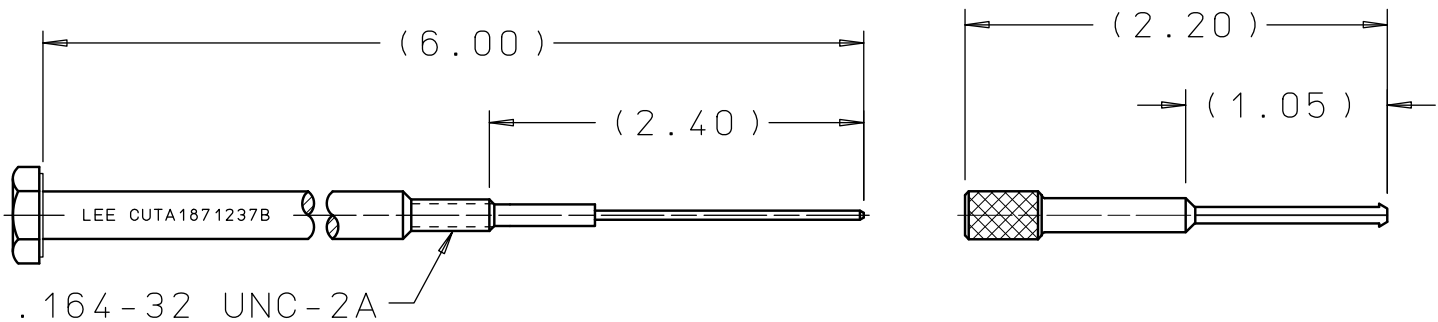
PIN INSTALLATION TOOL



BODY INSTALLATION TOOL



STRIKER



NOSE SEAL EXTRACTION TOOL

INSTALLATION AND EXTRACTION SET FOR
LEE .187/.197 SHUTTLE VALVE


REV	DATE	BY	DESCRIPTION
A	08-17-89	KCT	INITIAL RELEASE
2	01-06-90	GMR	CORRECTED MARKING ON NOSE SEAL EXTR TOOL SHEET 2.
B	10-01-90	GMR	BODY EXTR. TOOL: .32-.38 WAS .24 & MARKING REV WAS A. BODY INST TOOL: .30-.36 WAS .22 & MARKING REV WAS A.
2	04-14-08	KD	REMOVED REV LETTER FROM MARKING. UPDATED CONFIGURATION. DELETED SHEET 2.
3	03-26-09	KD	.187/.197 WAS .281/.291
4	03-26-09	KD	BODY EXTRACTION TOOL ADDED 2.00

PROPRIETARY ITEM

This document contains proprietary information and is submitted upon the express condition that the information contained herein will not be used directly or indirectly in any way detrimental to the interests of The Lee Company, and/or in violation of regulation DAR 7-104.9(a)(1 July 1974). et seq.

CUTD0105420

REFERENCE

DWG NO: CUTA1870137C	NOTES AND DIMENSIONS SHOWN HERE ON ARE FOR INSPECTION IDENTIFICATION ONLY. ALL MANUFACTURING RIGHTS RESERVED.		DRAWN BY:	KCT	08-17-89	LEE INSTALLATION/EXTRACTION TOOL SET			
			CHK'D BY:	P C	08-31-89	 THE LEE COMPANY WESTBROOK, CT 06498			
	EXTERNAL CORNER RAD: INTERNAL FILLET RAD:		APP'D BY:	JCD	11-16-89				
	SURFACE FINISH <input checked="" type="checkbox"/> ALL OVER DIMENSIONS ARE IN INCHES		MAT:			SIZE	CAGE CODE	DWG NO.	REV
	TOLERANCES 2 PLACES 3 PLACES ANGLES ±.015 ±.005 ±5°		H.T.:			B	92555	CUTA1870137C	B
			FINISH:			DWG SCALE: NONE			SHEET 1 OF 1