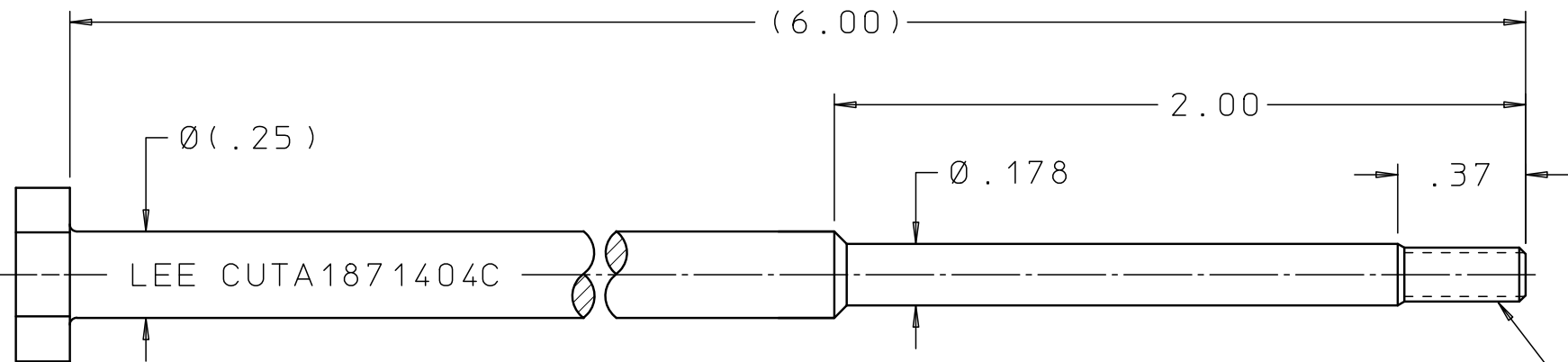


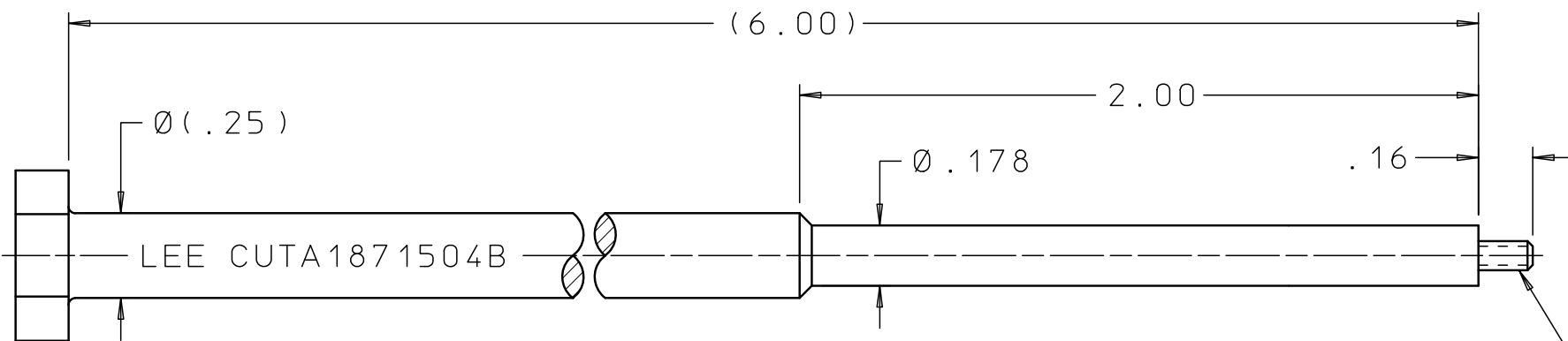
CUTA1870904C

REV	DATE	BY	DESCRIPTION
B2	07-15-10	KD	BODY TOOL: UPDATED HEX. (6.00) WAS 6.00 & Ø(.25) WAS Ø.25. PIN EXTRACT TOOL: UPDATED HEX, ADDED Ø(.25) & (6.00) WAS 6.00. PIN INSTAL TOOL: Ø(.50) WAS Ø.50 & (2.80) WAS 2.80. STRIKER: (1.25) WAS 1.25 & Ø(1.50) WAS Ø1.49.
C	02-25-13	KD	BODY & PIN TOOL; REMOVED HEX. ADDED 2 FLATS. BODY TOOL; ADDED MAJOR DIA: .151 MAXIMUM.



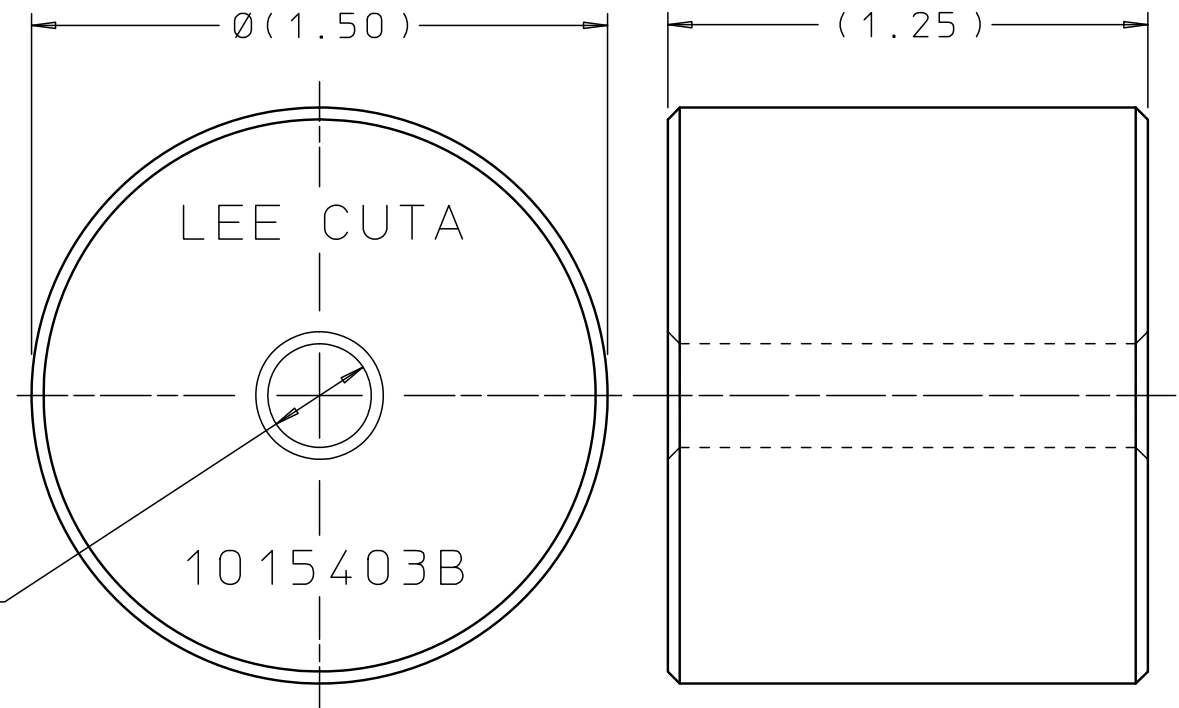
BODY INSTALLATION & EXTRACTION TOOL

.156-36 UNS-2A MODIFIED
MAJOR DIA: .151 MAXIMUM

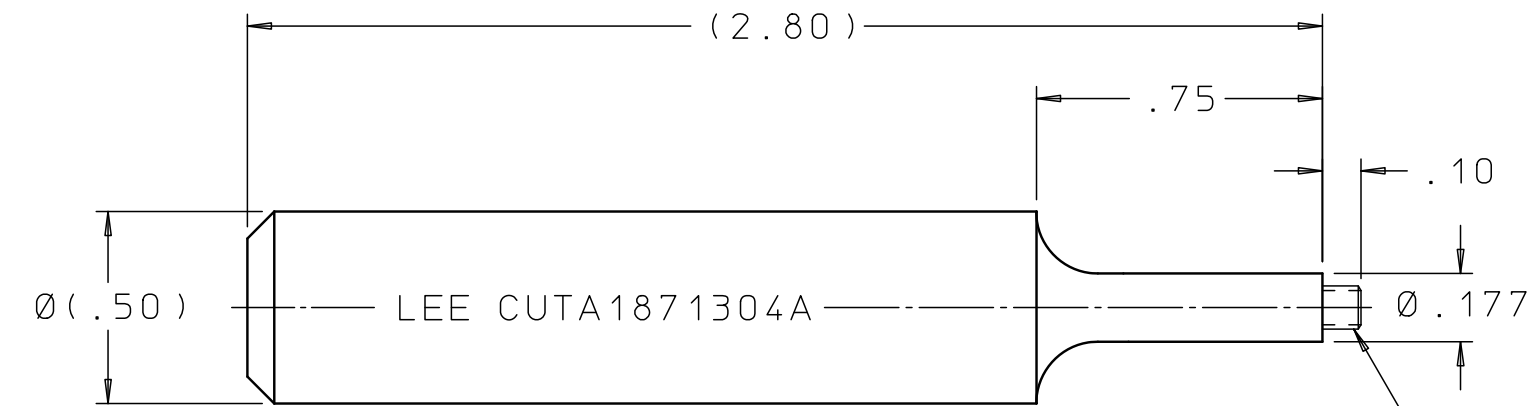


PIN EXTRACTION TOOL

.086-56 UNC



STRIKER



PIN INSTALLATION TOOL

.086-56 UNC-2A

INSTALLATION AND EXTRACTION SET FOR:
.187-.197 LEE 5K JET

PROPRIETARY ITEM

This document contains proprietary information and is submitted upon the express condition that the information contained herein will not be used directly or indirectly in any way detrimental to the interests of The Lee Company, and/or in violation of regulation DAR 7-104.9(a)(1 July 1974). et seq.

CUTD0407020
REFERENCE

DWG NO: CUTA1870904C	NOTES AND DIMENSIONS SHOWN HERE ON ARE FOR INSPECTION IDENTIFICATION ONLY. ALL MANUFACTURING RIGHTS RESERVED.		DRAWN BY: B R	02-08-93	LEE TOOL SET INSTALLATION AND EXTRACTION		
	EXTERNAL CORNER RAD: INTERNAL FILLET RAD:		CHK'D BY: L B	02-18-93			
	SURFACE FINISH ✓ ALL OVER DIMENSIONS ARE IN INCHES		APP'D BY: B B	02-10-93	THE LEE COMPANY WESTBROOK, CT 06498		
	TOLERANCES 2 PLACES ±.015 3 PLACES ±.005 ANGLES ±5°		MAT:	H.T.:			
		FINISH:		B	92555	CUTA1870904C	REV
				DWG SCALE: NONE		SHEET 1 OF 1	