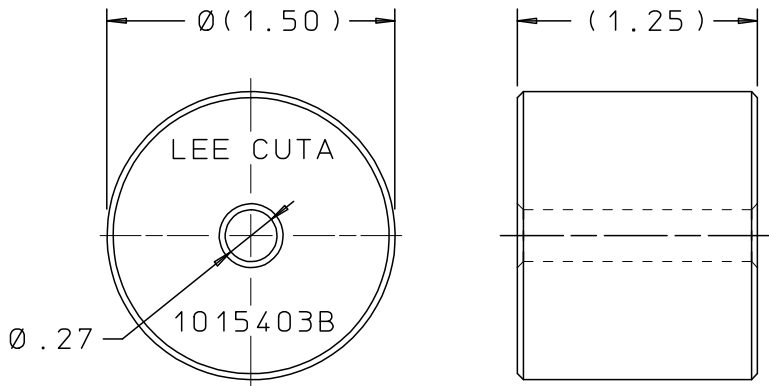
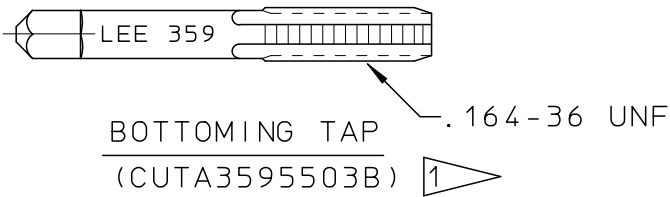
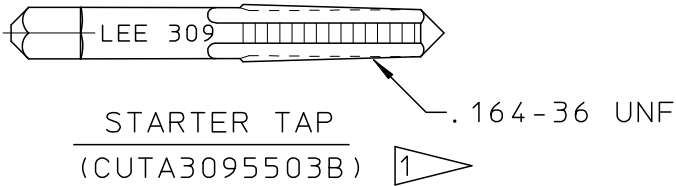
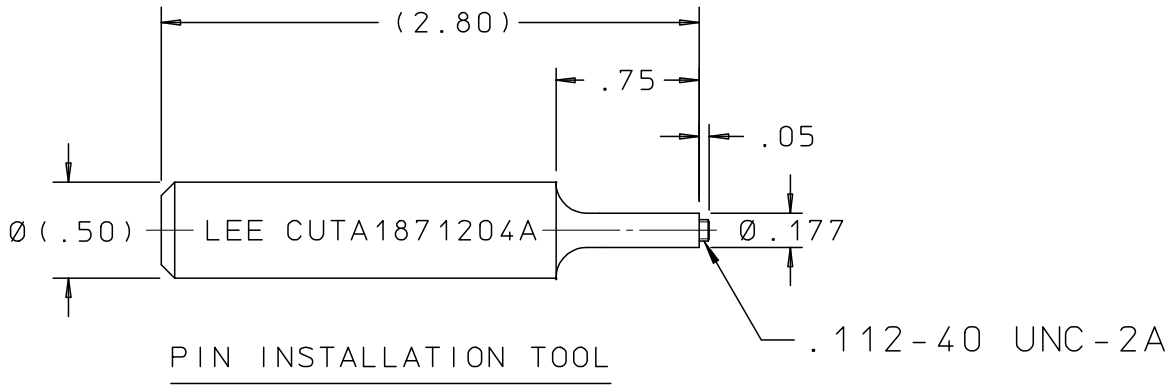
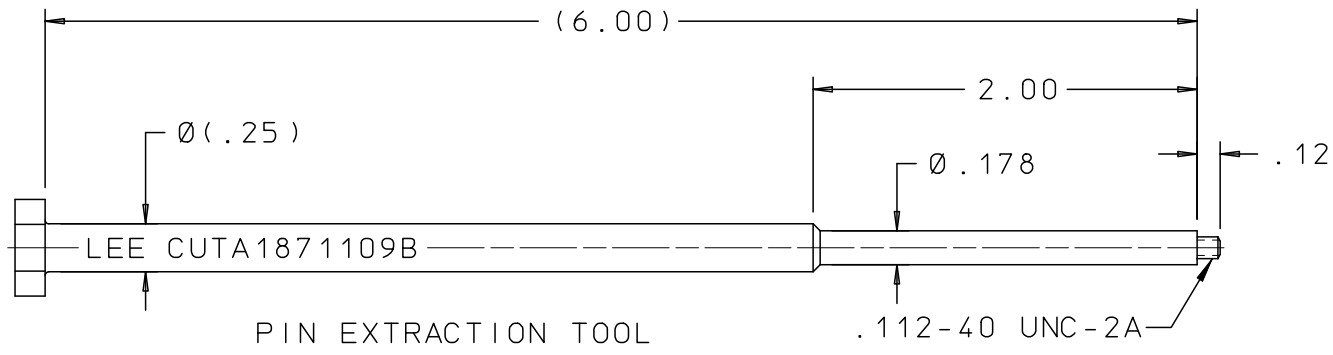
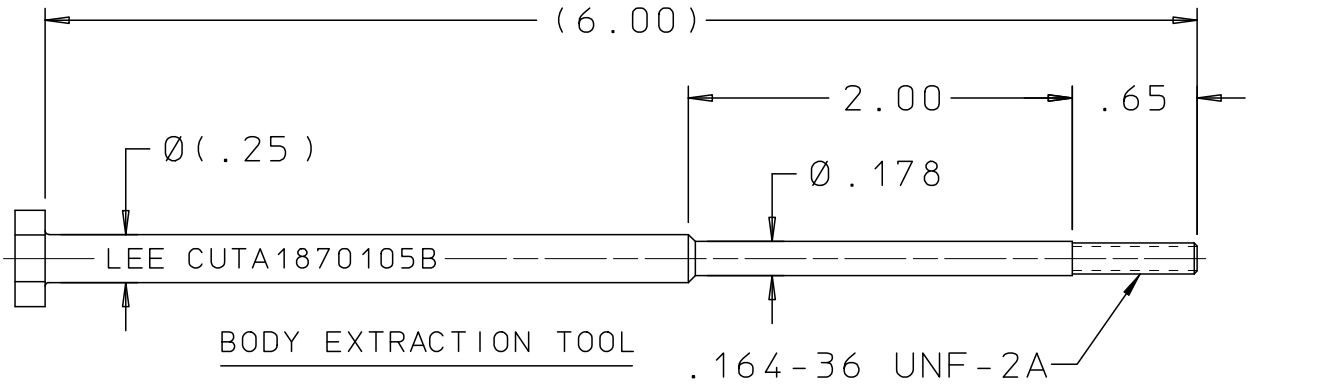


CUTA1877000C

| REV | DATE     | BY | DESCRIPTION                           |
|-----|----------|----|---------------------------------------|
| A   | 07-31-18 | KD | INITIAL RELEASE WAS PROPOSAL DRAWING. |



NOTES:  
1 USE A #29 DRILL BEFORE TAPPING BODY OF JHVA.

INSTALLATION AND EXTRACTION SET FOR: 5K JHVA

PROPRIETARY ITEM

This document contains confidential, trade secret information which is proprietary to The Lee Company, and is submitted upon the express condition that neither it, nor our products, will be used directly or indirectly in any way detrimental to the interests of The Lee Company, such as disclosure to others or replication of our products, and/or in violation of 18 U.S.C. 1905 (TSA), 5 U.S.C. 552 (FOIA), E.O.12600 of 6/23/87, 18 U.S.C. 1832, and C.G.S.A. (CT) Chapter 625 sec. 35-50 thru 35-58.

FMF

THE LEE COMPANY  
WESTBROOK, CT

CUTD1877000

REFERENCE

DWG NO: CUTA1877000C

NOTES AND DIMENSIONS SHOWN HERE ON ARE FOR INSPECTION IDENTIFICATION ONLY. ALL MANUFACTURING RIGHTS RESERVED.

EXTERNAL CORNER RAD:  
INTERNAL FILLET RAD:

SURFACE FINISH ✓ ALL OVER  
DIMENSIONS ARE IN INCHES

TOLERANCES  
2 PLACES ±.015 3 PLACES ±.005 ANGLES ±5°

DRAWN BY: K D 07-20-15

CHK'D BY: E S 08-21-15

APP'D BY: R M 09-02-15

MAT:

H.T.:

FINISH:

LEE TOOL SET  
INSTALLATION AND EXTRACTION



THE LEE COMPANY  
WESTBROOK, CT 06498

| SIZE | CAGE CODE | DWG NO.      | REV |
|------|-----------|--------------|-----|
| B    | 92555     | CUTA1877000C | A   |

DWG SCALE: NONE SHEET 1 OF 1