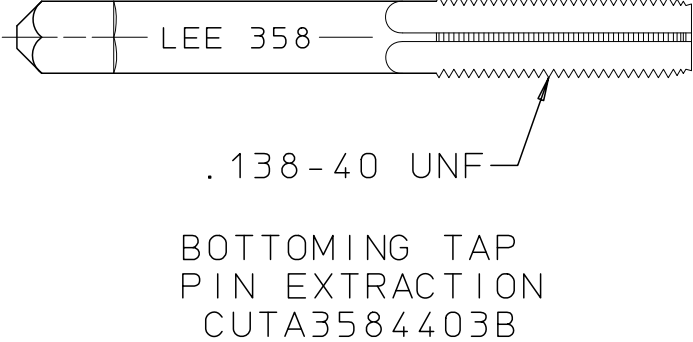
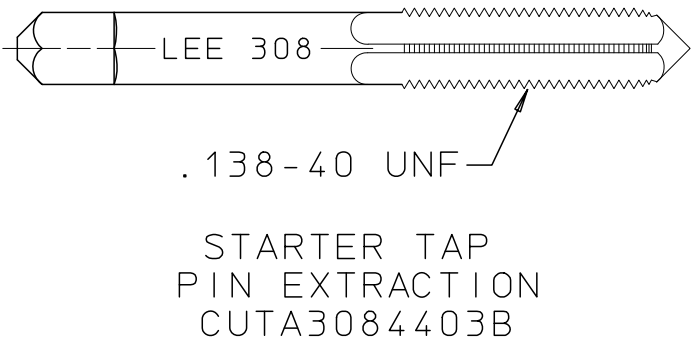
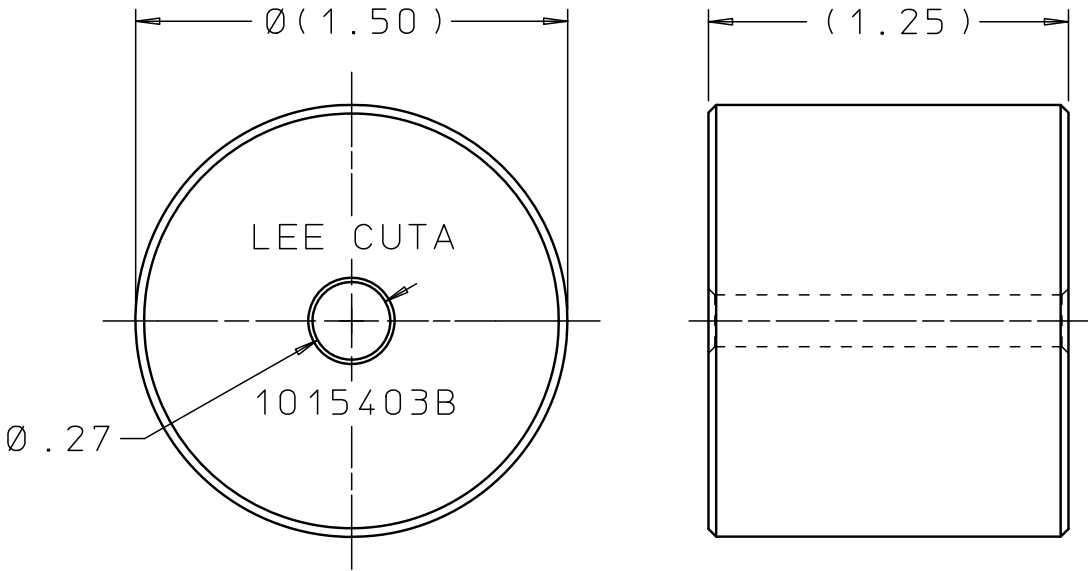
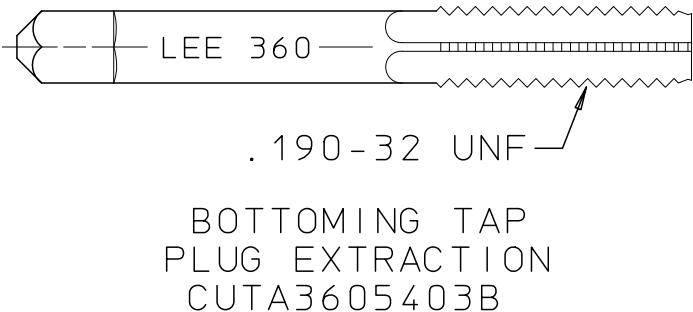
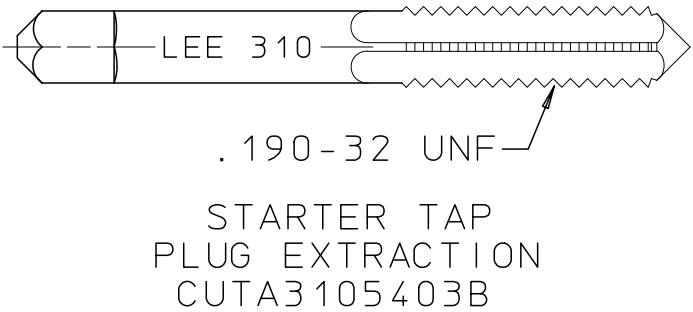
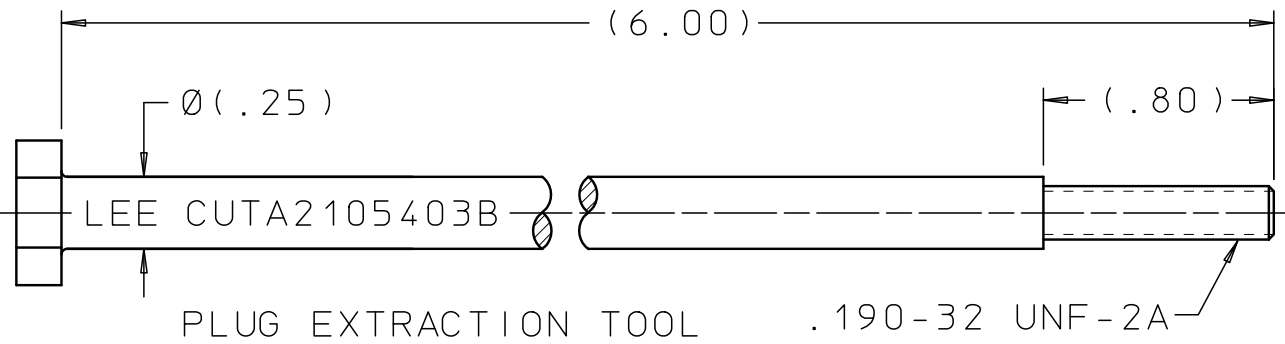
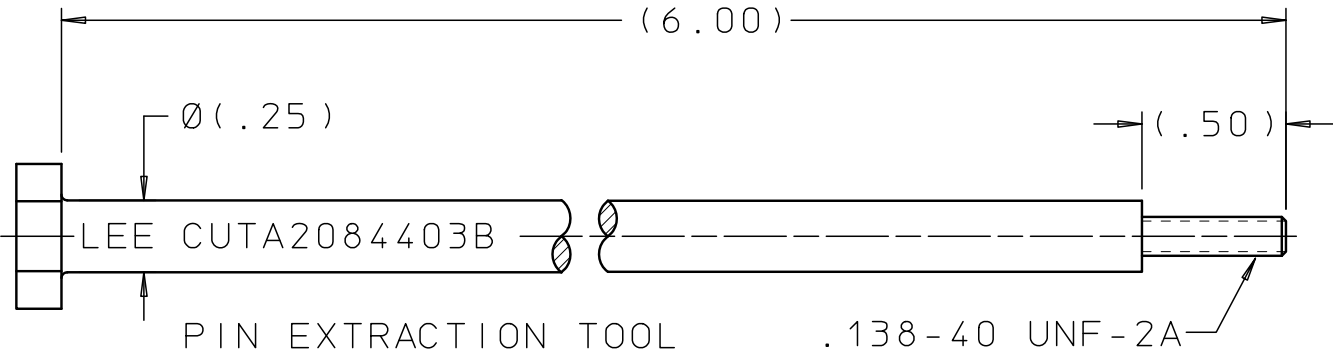


CUTA2180103B

| REV | DATE     | BY  | DESCRIPTION  |
|-----|----------|-----|--|
| A   | 07-21-77 | MW  | INITIAL RELEASE  |
| B   | 07-24-91 | GMR | REDRAWN TO CAD,<br>WAS WORD DRAWING.   |
| C   | 10-26-12 | KD  | PIN EXTR TOOL;<br>REMOVED HEX & REV<br>LTR FROM MARKING.<br>ADDED 2 FLATS. PLUG<br>EXTR TOOL; REMOVED<br>HEX & REV LTR FROM<br>MARKING. ADDED 2<br>FLATS. STRIKER;<br>Ø(1.50) WAS Ø1.50,<br>(1.25) WAS 1.25.<br>REMOVED REV LTR FROM<br>MARKING. |




PROPRIETARY ITEM

This document contains proprietary information and is submitted upon the express condition that the information contained herein will not be used directly or indirectly in any way detrimental to the interests of The Lee Company, and/or in violation of regulation DAR 7-104.9(a)(1 July 1974), et seq.

CUTD2180103

REFERENCE

|                         |   |  |  |                        |  |  |  |  |  |
|-------------------------|---|--|--|------------------------|--|--|--|--|--|
| DWG NO:<br>CUTA2180103B | NOTES AND DIMENSIONS SHOWN HERE ON<br>ARE FOR INSPECTION IDENTIFICATION ONLY.<br>ALL MANUFACTURING RIGHTS RESERVED. |  |  | DRAWN BY: M W 07-21-77 |  | LEE TOOL SET - EXTRACTION  |  |  |  |
|                         |   |  |  | CHK'D BY:              |  |  THE LEE COMPANY<br>WESTBROOK, CT 06498 |  |  |  |
|                         |   |  |  | APP'D BY:              |  |  |  |  |  |
|                         | EXTERNAL CORNER RAD:<br>INTERNAL FILLET RAD:  |  |  | MAT:                   |  | SIZE CAGE CODE DWG NO. REV<br>B 92555 CUTA2180103B C   |  |  |  |
|                         | SURFACE FINISH ✓ ALL OVER<br>DIMENSIONS ARE IN INCHES   |  |  | H.T.:                  |  |  |  |  |  |
|                         | TOLERANCES<br>2 PLACES 3 PLACES ANGLES<br>±.015 ±.005 ±5°   |  |  | FINISH:                |  | DWG SCALE: NONE SHEET 1 OF 1   |  |  |  |