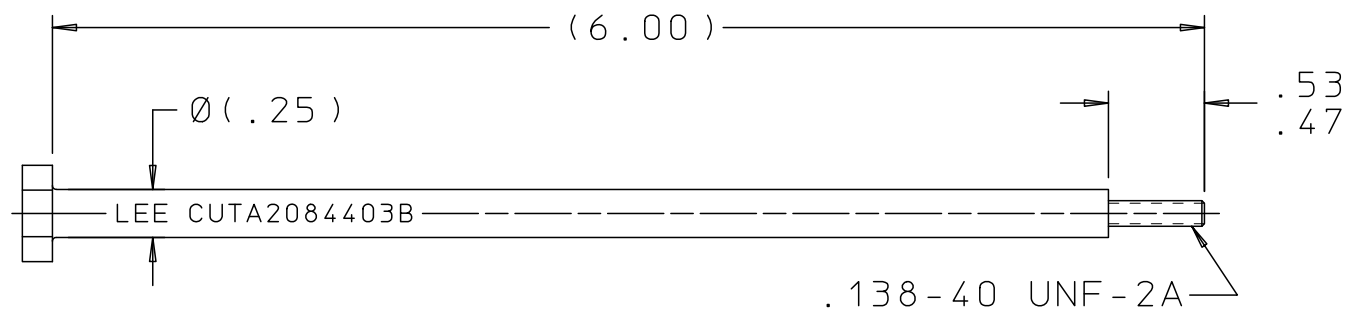
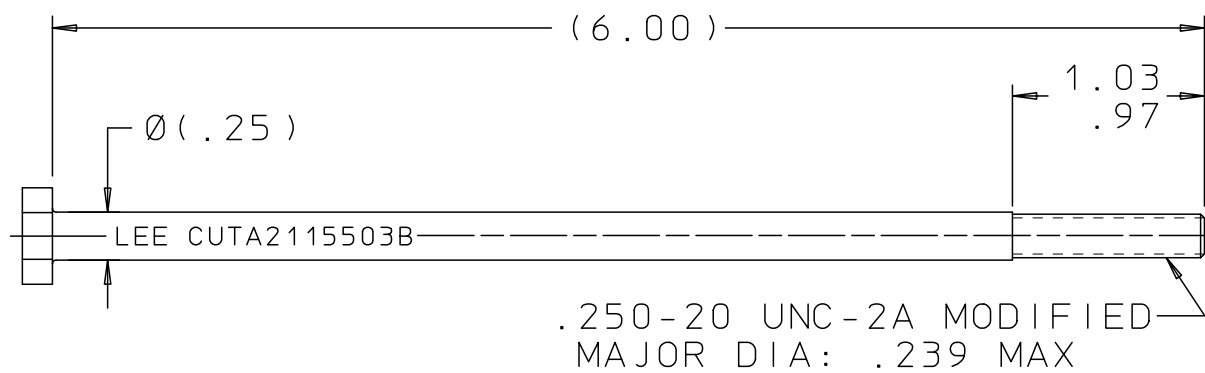


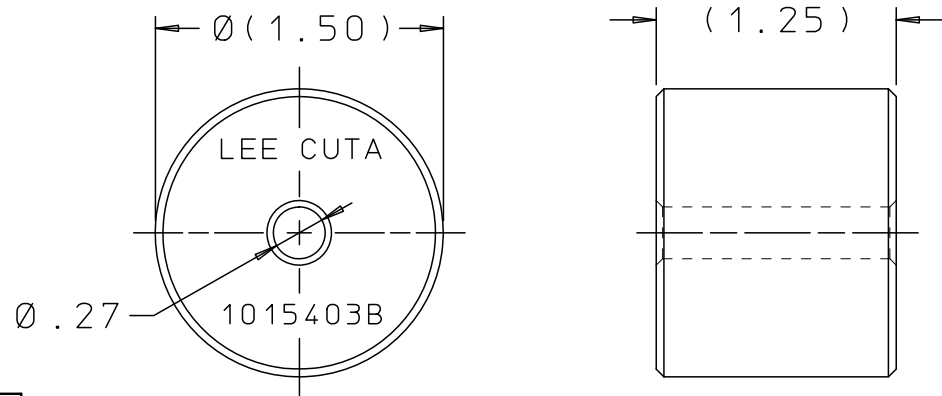
CUTA2500103B



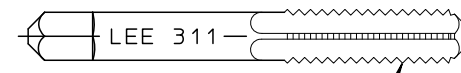
PIN EXTRACTION TOOL



PLUG EXTRACTION TOOL

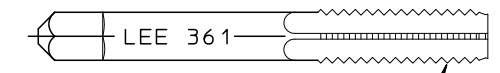


STRIKER



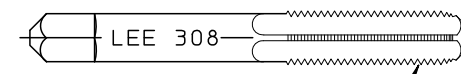
.250-20 UNC-2A
MODIFIED
O.D: .241 MAX

STARTER TAP
PLUG EXTRACTION
CUTA3115503B



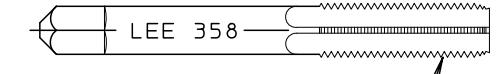
.250-20 UNC-2A
MODIFIED
O.D: .241 MAX

BOTTOMING TAP
PLUG EXTRACTION
CUTA3615503B



.138-40 UNF

STARTER TAP
PIN EXTRACTION
CUTA3084403B



.138-40 UNF

BOTTOMING TAP
PIN EXTRACTION
CUTA3584403B

REV	DATE	BY	DESCRIPTION
A	05-03-89	KCT	REDRAWN TO CAD; WAS WORD DRAWING
2	07-25-91	GMR	REDRAWN TO B SIZE; UPDATED
2	06-30-04	KD	REMOVED REV LETTERS FROM MARKINGS.
C	07-30-09	KD	CUTA2115503B Ø.239 MAX WAS Ø.230 MAX. CUTA3115503B & CUTA3615503B Ø.241 MAX WAS Ø.232 MAX.
D	04-24-13	KD	PIN EXTR TOOL & PLUG EXTR TOOL: REMOVED HEX, ADDED 2 FLATS. STRIKER: Ø(1.50) WAS Ø1.50. (1.25) WAS 1.25.

PROPRIETARY ITEM

This document contains proprietary information and is submitted upon the express condition that the information contained herein will not be used directly or indirectly in any way detrimental to the interests of The Lee Company, and/or in violation of regulation DAR 7-104.9(a)(1 July 1974), et seq.

CUTD2500103
REFERENCE

DWG NO: CUTA2500103B

NOTES AND DIMENSIONS SHOWN HERE ON ARE FOR INSPECTION IDENTIFICATION ONLY. ALL MANUFACTURING RIGHTS RESERVED.

EXTERNAL CORNER RAD:
INTERNAL FILLET RAD:

SURFACE FINISH ✓ ALL OVER
DIMENSIONS ARE IN INCHES

TOLERANCES
2 PLACES ±.015 3 PLACES ±.005 ANGLES ±5°

DRAWN BY: KMS 08-11-76

CHK'D BY: ECB 08-12-76

APPD BY: G L

MAT:

H.T.:

FINISH:

LEE TOOL SET
EXTRACTION



THE LEE COMPANY
WESTBROOK, CT 06498

SIZE	CAGE CODE	DWG NO.	REV
B	92555	CUTA2500103B	D

DWG SCALE: NONE SHEET 1 OF 1