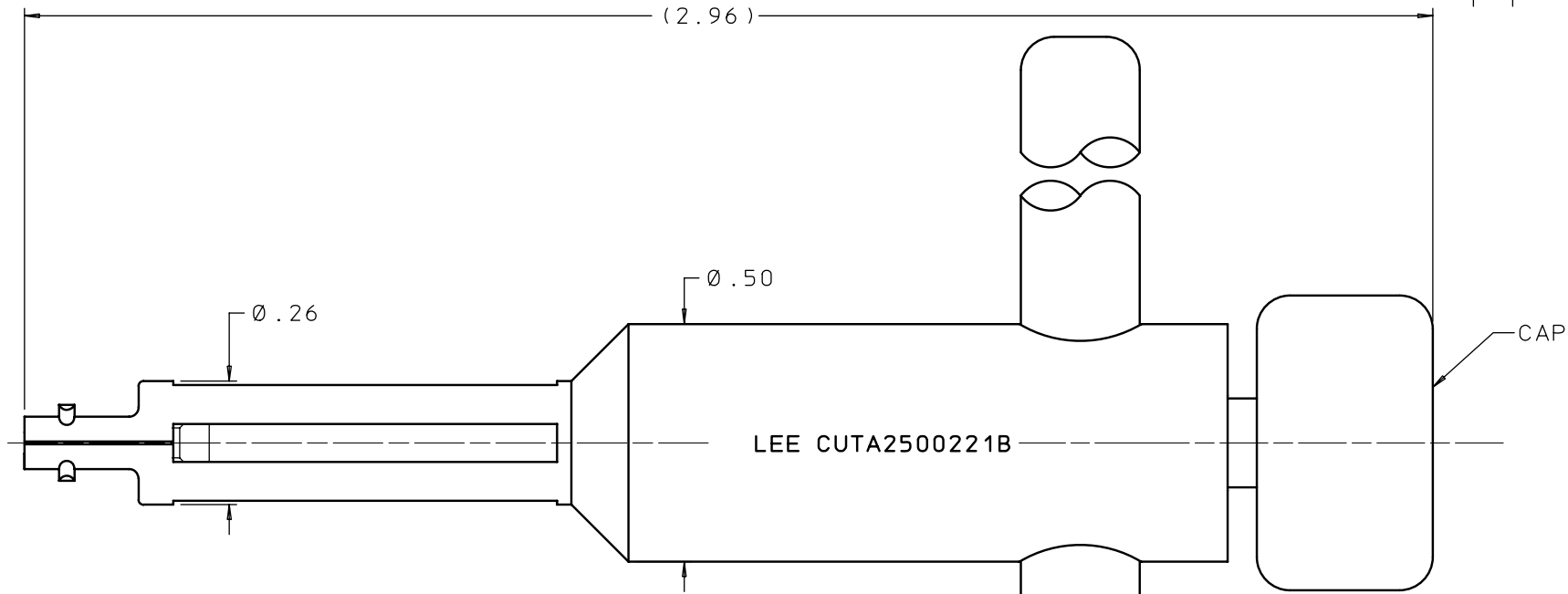


CUTA2500221B

REV	DATE	BY	DESCRIPTION
A	03-11-05	HM	INITIAL RELEASE




INSTRUCTIONS:

1. ALIGN THE TABS ON THE EXTRACTION TOOL TO THE SLOTS OF THE MultiSeal. INSERT THE EXTRACTION TOOL INTO THE MultiSeal.
2. PRESS THE CAP DOWN TO EXPAND THE TABS INTO THE SLOTS OF THE MultiSeal.
3. PULL THE MultiSeal OUT.
4. PULL THE CAP UP TO RELEASE THE MultiSeal.

PROPRIETARY ITEM

This document contains proprietary information and is submitted upon the express condition that the information contained herein will not be used directly or indirectly in any way detrimental to the interests of The Lee Company, and/or in violation of regulation DAR 7-104.9(a)(1 July 1974), et seq.

CUTD0407430  
REFERENCE

DWG NO: CUTA2500221B	NOTES AND DIMENSIONS SHOWN HERE ON ARE FOR INSPECTION IDENTIFICATION ONLY. ALL MANUFACTURING RIGHTS RESERVED.		DRAWN BY: H M	03-11-05	LEE ANNULUS MULTISEAL EXTRACTION TOOL
	EXTERNAL CORNER RAD: INTERNAL FILLET RAD:		CHK'D BY: DEP	03-15-05	
	SURFACE FINISH ✓ ALL OVER DIMENSIONS ARE IN INCHES		APP'D BY: B B	03-28-05	 <b>THE LEE COMPANY</b> WESTBROOK, CT 06498
	TOLERANCES 2 PLACES ±.015 3 PLACES ±.005 ANGLES ±5°		MAT:		
		H.T.:		DWG SCALE: NONE SHEET 1 OF 1	
		FINISH:			