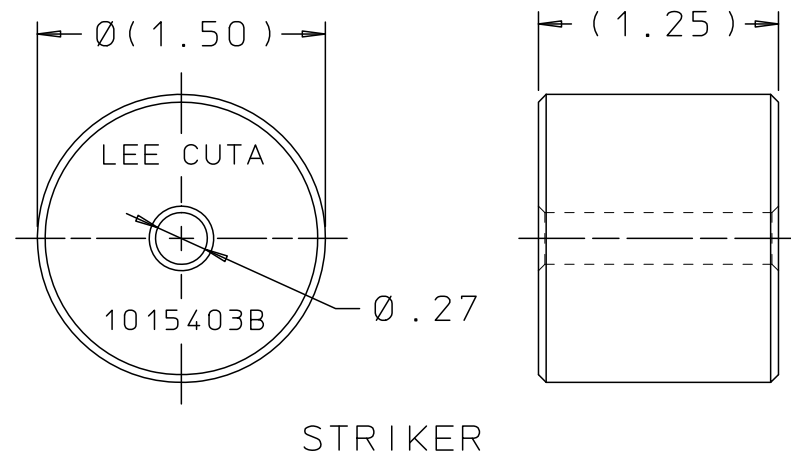
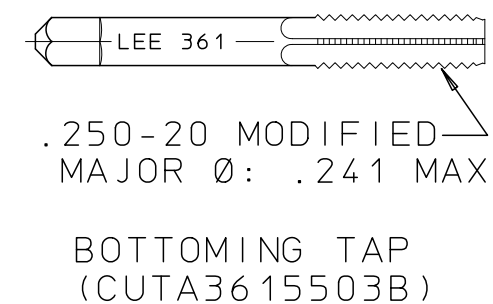
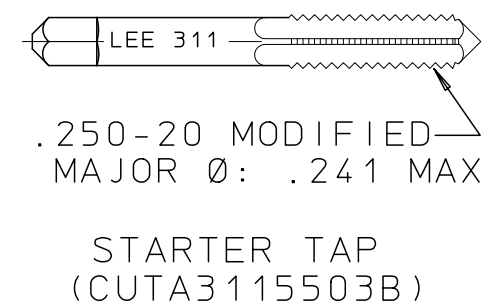
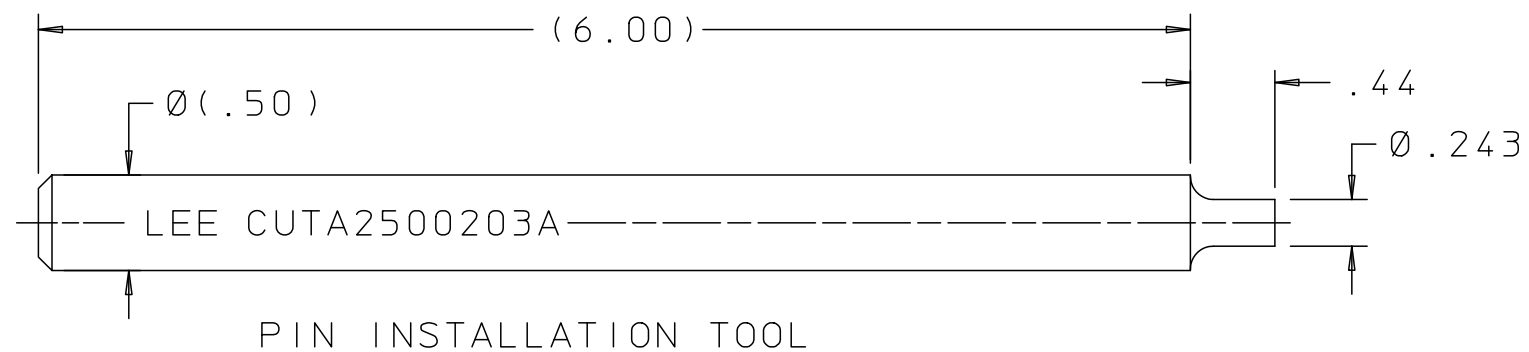
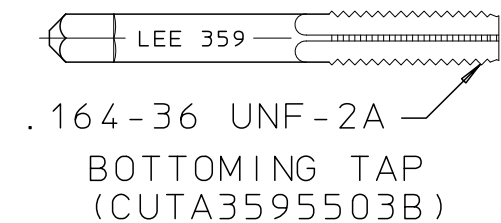
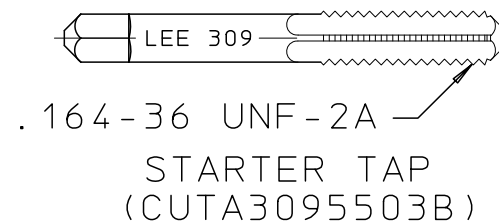
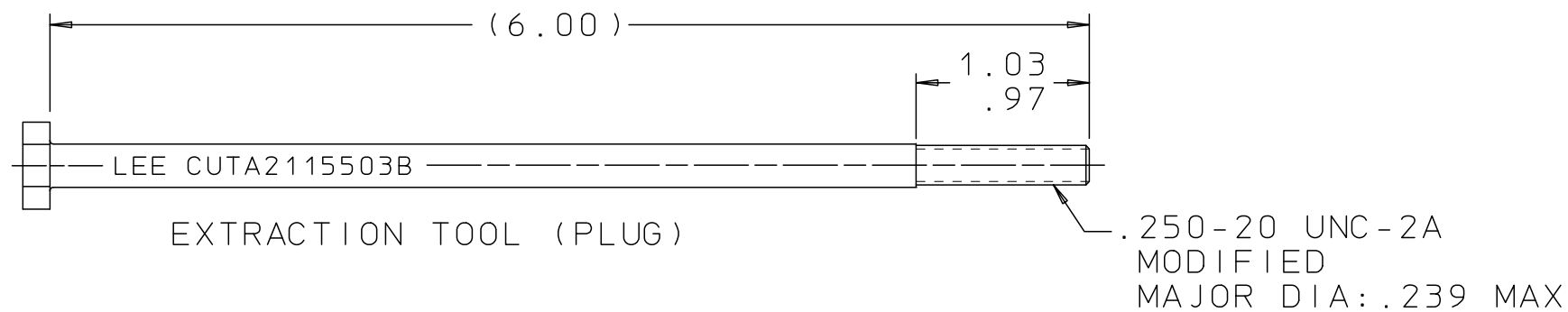
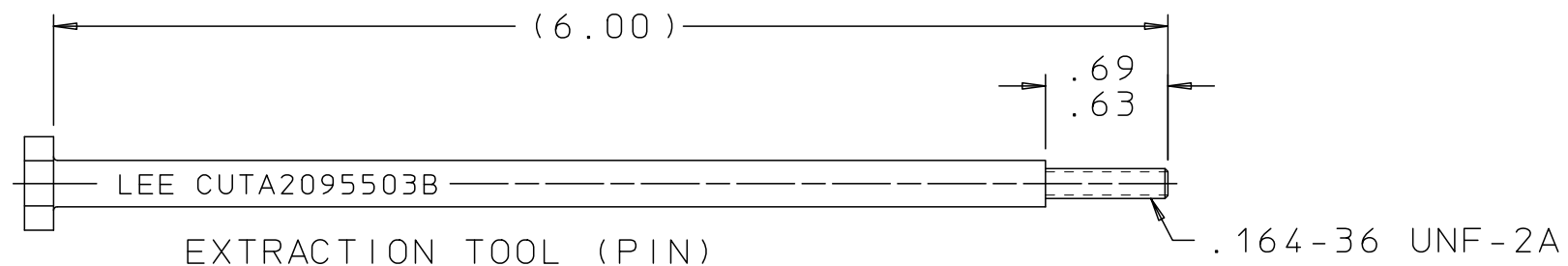


CUTA250080 1C

REV	DATE	BY	DESCRIPTION
A3	07-29-10	KD	EXTR TOOL (PIN); UP-DATED HEX. EXTR TOOL (PLUG); UPDATED HEX & 1.03-.97 WAS 1.035-.965. PIN INST TOOL, Ø(.50) WAS Ø.50, .44 WAS (.44). STRIKER: Ø(1.50) WAS Ø1.50 & (1.25) WAS 1.25.
B	02-28-13	KD	EXTR TOOL (PIN) & EXTR TOOL (PLUG); REMOVED HEX, ADDED 2 FLATS.



INSTALLATION AND EXTRACTION SET FOR:
LEE .250-.260 JELA
LEE .250-.260 JEP A

PROPRIETARY ITEM

This document contains proprietary information and is submitted upon the express condition that the information contained herein will not be used directly or indirectly in any way detrimental to the interests of The Lee Company, and/or in violation of regulation DAR 7-104.9(a)(1 July 1974). et seq.

CUTD0105670
REFERENCE

DWG NO: CUTA2500801C	NOTES AND DIMENSIONS SHOWN HERE ON ARE FOR INSPECTION IDENTIFICATION ONLY. ALL MANUFACTURING RIGHTS RESERVED.	DRAWN BY: B R 11-01-95	LEE TOOL SET INSTALLATION AND EXTRACTION		
	EXTERNAL CORNER RAD: INTERNAL FILLET RAD:	CHK'D BY: L B 11-03-95	THE LEE COMPANY WESTBROOK, CT 06498		
	SURFACE FINISH ✓ ALL OVER DIMENSIONS ARE IN INCHES	APP'D BY: B B 11-07-95	SIZE: B	CAGE CODE: 92555	DWG NO.: CUTA2500801C
	TOLERANCES 2 PLACES ±.015 3 PLACES ±.005 ANGLES ±5°	MAT: H.T.: FINISH:	DWG SCALE: NONE		REV: B SHEET 1 OF 1