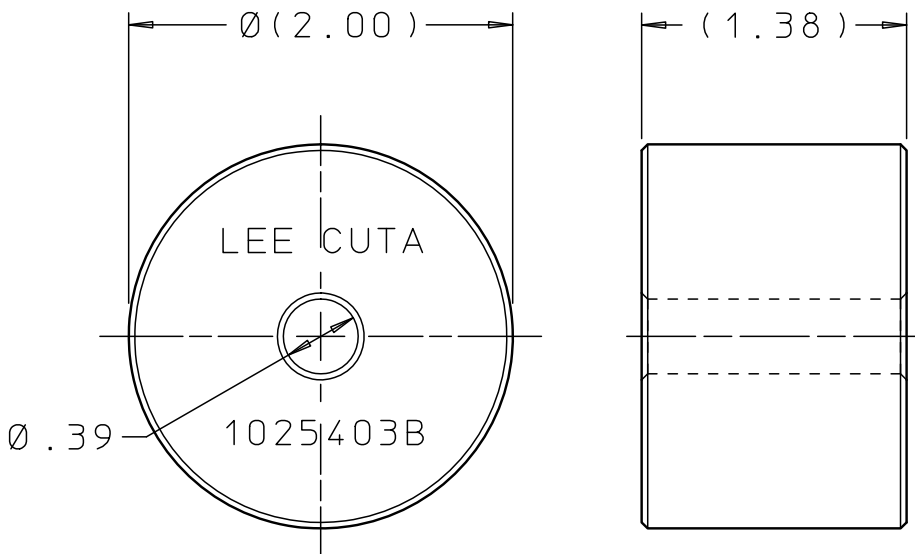
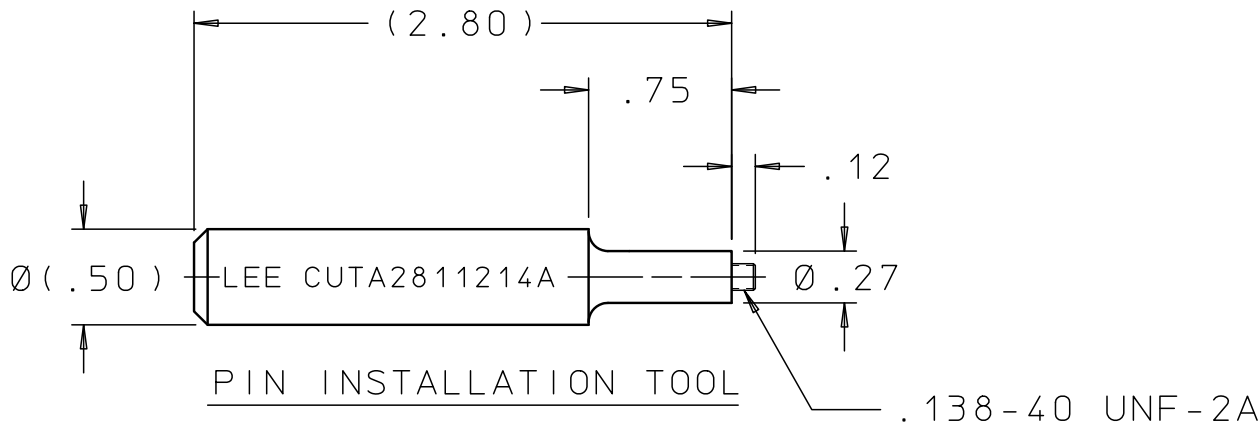
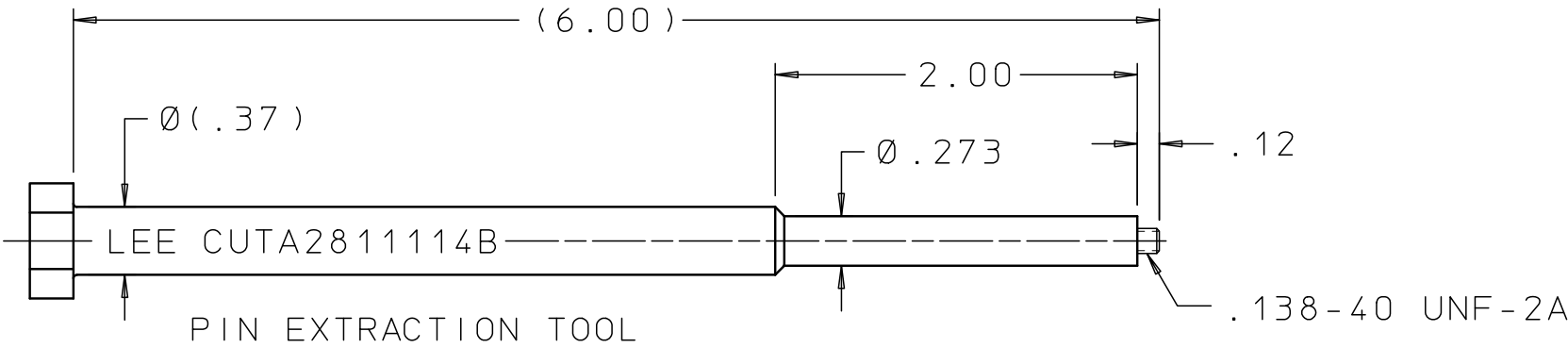
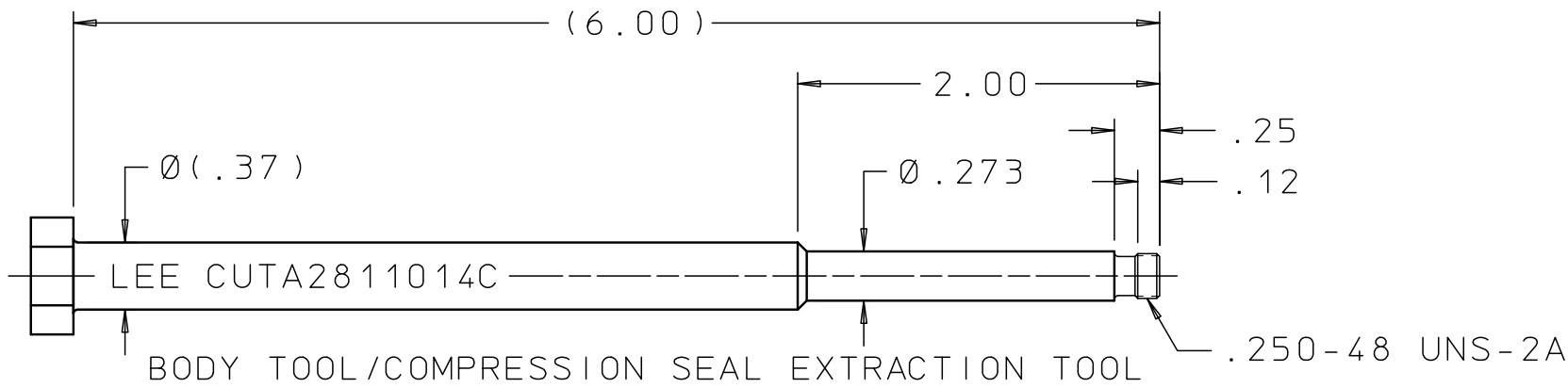


CUTA2810114C



STRIKER

INSTALLATION AND EXTRACTION SET FOR:  
.281 - .291 LEE FLOSET  
.281 - .291 LEE P.R.I.  
.281 - .291 LEE FLOW CONTROL


REV	DATE	BY	DESCRIPTION
J4	08-03-10	KD	BODY/COMP SEAL EXTR TOOL; ADDED Ø(.37). (6.00) WAS 6.00. PIN EXTR TOOL;ADDED Ø(.37). (6.00) WAS 6.00. UPDATED HEX. PIN INST TOOL;Ø(.50) WAS Ø.50 & (2.80) WAS 2.80. STRIKER; Ø(2.00) WAS Ø2.00 (1.38) WAS 1.38.
K	12-03-12	KD	BODY/COMP SEAL EXTR TOOL & PIN EXTR TOOL REMOVED HEX, ADDED 2 FLATS.

PROPRIETARY ITEM

This document contains proprietary information and is submitted upon the express condition that the information contained herein will not be used directly or indirectly in any way detrimental to the interests of The Lee Company, and/or in violation of regulation DAR 7-104.9(a)(1 July 1974). et seq.

CUTD0101250

REFERENCE

DWG NO: CUTA2810114C	NOTES AND DIMENSIONS SHOWN HERE ON ARE FOR INSPECTION IDENTIFICATION ONLY. ALL MANUFACTURING RIGHTS RESERVED.	DRAWN BY:	E B	05-19-70	LEE TOOL SET INSTALLATION AND EXTRACTION				
	EXTERNAL CORNER RAD: INTERNAL FILLET RAD:  SURFACE FINISH ✓ ALL OVER DIMENSIONS ARE IN INCHES  TOLERANCES 2 PLACES 3 PLACES ±.015 ±.005 ANGLES ±5°	CHK'D BY:	H R	05-22-70	 THE LEE COMPANY WESTBROOK, CT 06498				
		APP'D BY:	G L						
		MAT:				SIZE	CAGE CODE	DWG NO.	REV
		H.T.:				B	92555	CUTA2810114C	K
		FINISH:				DWG SCALE: NONE		SHEET 1 OF 1	