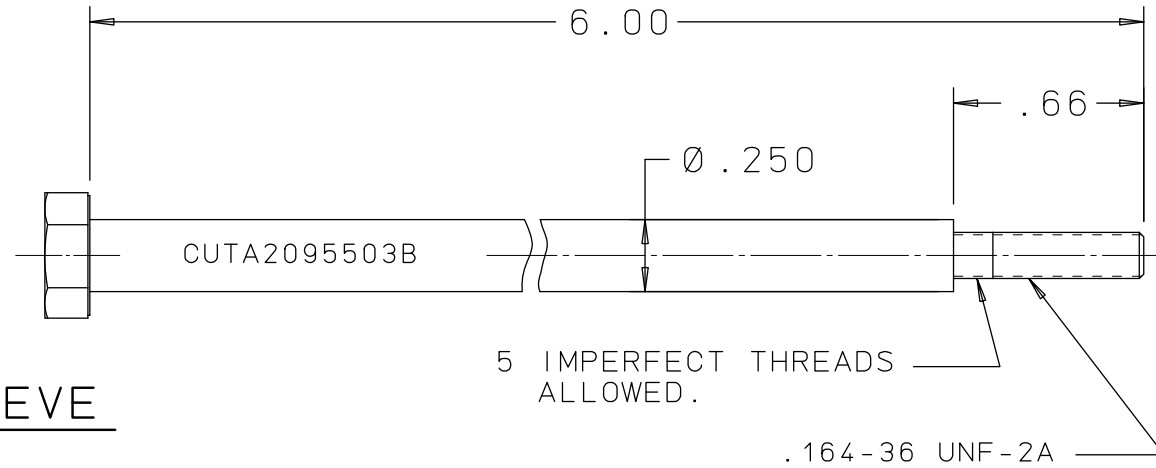


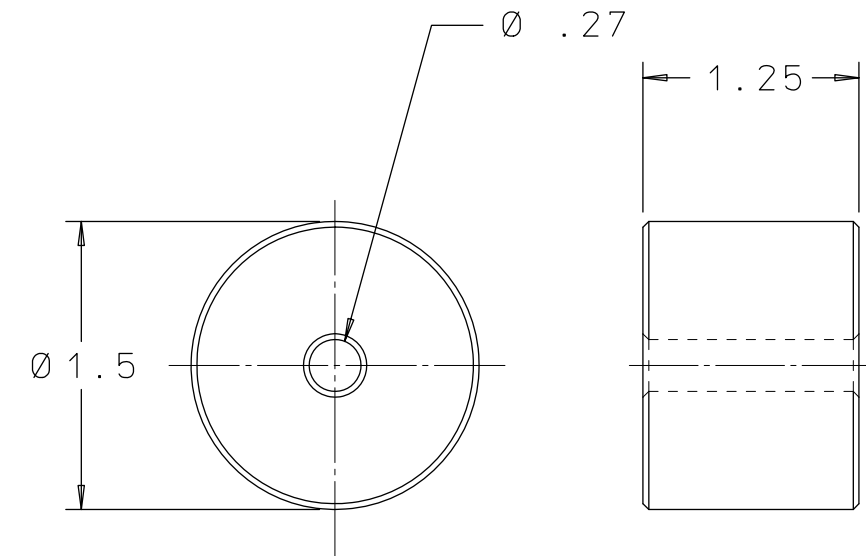
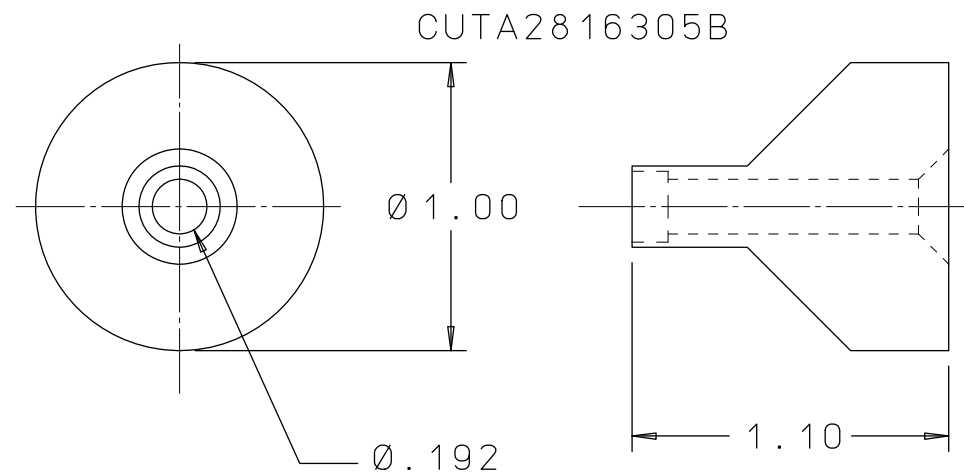
CUTA2816205B

REV	DATE	BY	DESCRIPTION
A	02-02-89	KT	REDRAWN TO CAD WAS "A" SIZE WORD DRAWING
2			

BOLT EXTR. TOOL

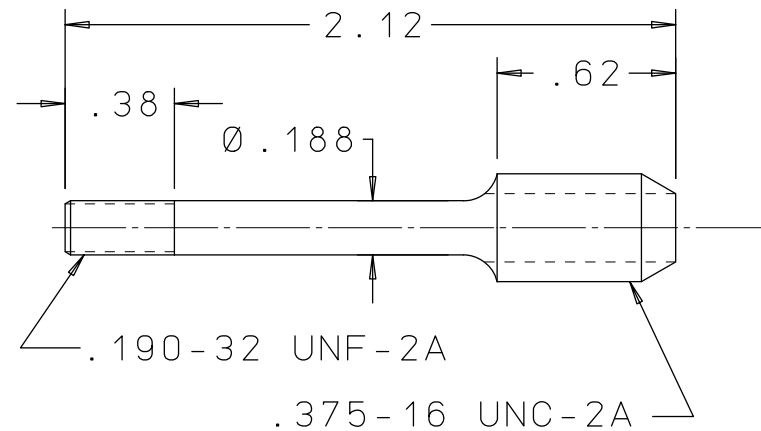


EXTRACTION SLEEVE



STRIKER - CUTA01015403B

STUD - CUTA3435405A



EXTRACTION INSTRUCTIONS:

1. AFTER SLIDING EXTRACTION SLEEVE ONTO STUD, THREAD STUD INTO PISTON ASSEMBLY.
2. THREAD OTHER END OF STUD FULLY INTO RFO PIN. IF STUD BINDS UP IN PIN, CLEAN UP THREADS IN PIN WITH .190-32 UNF TAP.
3. OPERATE PUMP TO EXTRACT PIN.
4. THREAD BOLT, WITH STRIKER, FULLY INTO RFO PLUG AND REMOVE BY TAPPING THE STRIKER AGAINST THE BOLT HEAD.

PROPRIETARY ITEM

This document contains proprietary information and is submitted upon the express condition that the information contained herein will not be used directly or indirectly in any way detrimental to the interests of The Lee Company, and/or in violation of regulation DAR 7-104.9(a)(1 July 1974). et seq.

CUTD2816205
REFERENCE

DWG NO: CUTA2816205B	NOTES AND DIMENSIONS SHOWN HERE ON ARE FOR INSPECTION IDENTIFICATION ONLY. ALL MANUFACTURING RIGHTS RESERVED.	DRAWN BY: DFW	8-20-82	EXTRACTION SET LEE RFO PLUG			
	EXTERNAL CORNER RAD: INTERNAL FILLET RAD:	CHK'D BY: RJG	8-30-82	THE LEE COMPANY WESTBROOK, CT 06498			
	SURFACE FINISH ✓ ALL OVER DIMENSIONS ARE IN INCHES	APP'D BY: SEA	9-03-82				
	TOLERANCES 2 PLACES ±.015 3 PLACES ±.005 ANGLES ±5°	MAT:	H.T.:	FINISH:	SIZE: B	CAGE CODE: 92555	DWG NO.: CUTA2816205B
				DWG SCALE: NONE		SHEET 1 OF 1	