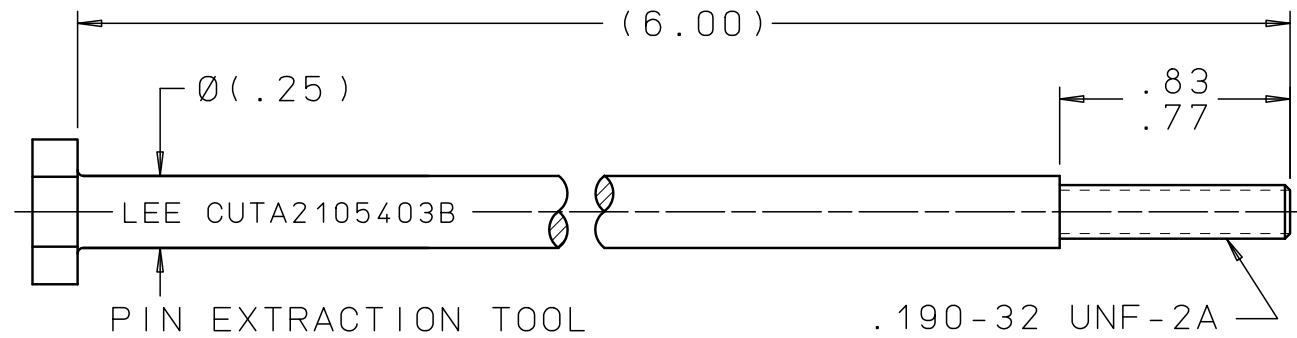
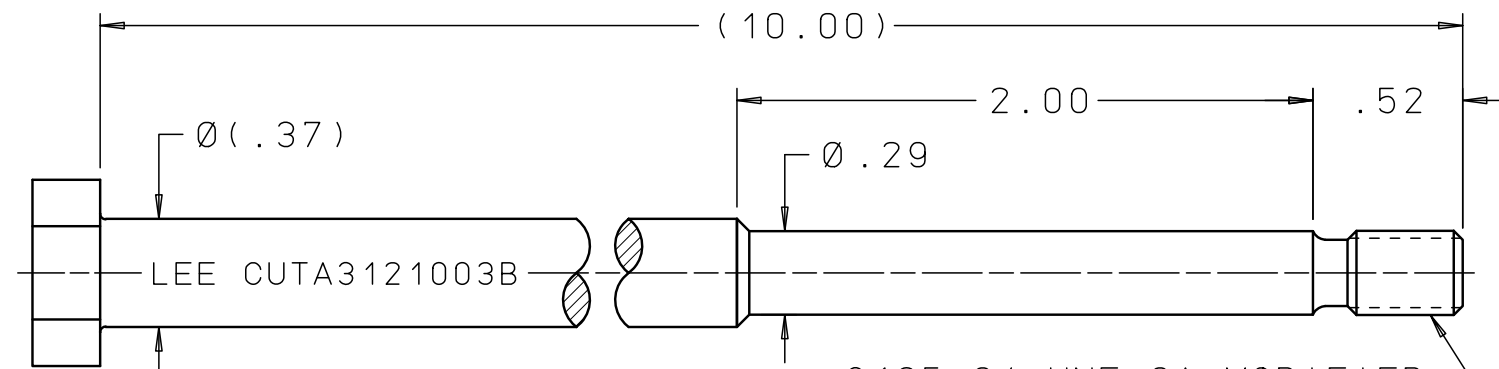


# CUTA3120103B



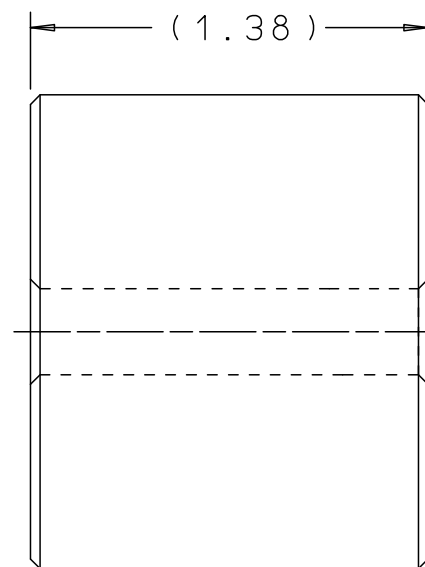
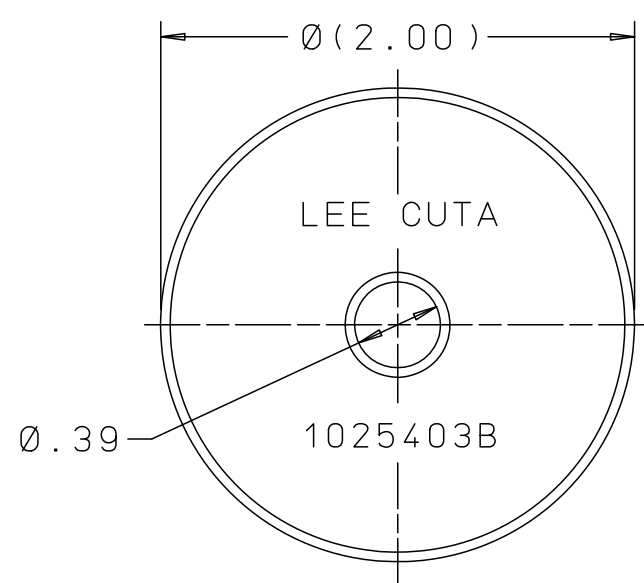
PIN EXTRACTION TOOL

.190-32 UNF-2A

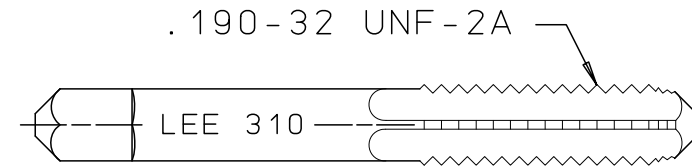


PLUG EXTRACTION TOOL

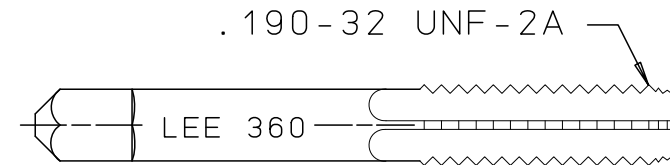
.3125-24 UNF-2A MODIFIED  
MAJOR DIA: .294 MAX



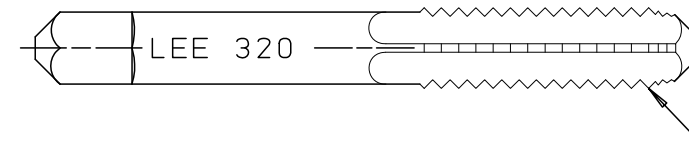
STRIKER



STARTER TAP  
PIN EXTRACTION

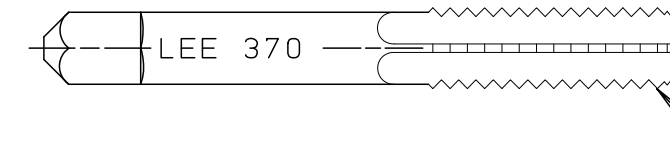


BOTTOMING TAP  
PIN EXTRACTION



STARTER TAP  
PLUG EXTRACTION

.3125-24 UNF-2A  
MODIFIED OD: .297 MAX



BOTTOMING TAP  
PLUG EXTRACTION

.3125-24 UNF-2A  
MODIFIED OD: .297 MAX

EXTRACTION TOOL SET FOR:

.312 LEE PLUGS

REV	DATE	BY	DESCRIPTION
B	03-15-12	KD	REMOVED ALL REV LTR FROM MARKINGS. PIN EXTR TOOL, REMOVED HEX. ADDED 2 FLATS. .83-.77 WAS .80 & Ø(.25) WAS Ø.25. PLUG EXTR TOOL, REMOVED HEX. ADDED 2 FLATS & Ø(.37). Ø.29 WAS Ø.28. STRIKER, Ø(2.00) WAS Ø2.00 & (1.38) WAS 1.38.

## PROPRIETARY ITEM

This document contains proprietary information and is submitted upon the express condition that the information contained herein will not be used directly or indirectly in any way detrimental to the interests of The Lee Company, and/or in violation of regulation DAR 7-104.9(a)(1 July 1974). et seq.

CUTD0107010

REFERENCE

DWG NO: CUTA3120103B

NOTES AND DIMENSIONS SHOWN HERE ON ARE FOR INSPECTION IDENTIFICATION ONLY. ALL MANUFACTURING RIGHTS RESERVED.

EXTERNAL CORNER RAD:  
INTERNAL FILLET RAD:

SURFACE FINISH ✓ ALL OVER  
DIMENSIONS ARE IN INCHES

TOLERANCES  
2 PLACES ±.015 3 PLACES ±.005 ANGLES ±5°

DRAWN BY: GMR 04-19-90

CHK'D BY: P C 04-26-90

APP'D BY: JCD 04-26-90

MAT:

H.T.:

FINISH:

LEE PLUG EXTRACTION SET



THE LEE COMPANY  
WESTBROOK, CT 06498

SIZE	CAGE CODE	DWG NO.	REV
B	92555	CUTA3120103B	B

DWG SCALE: NONE

SHEET 1 OF 1