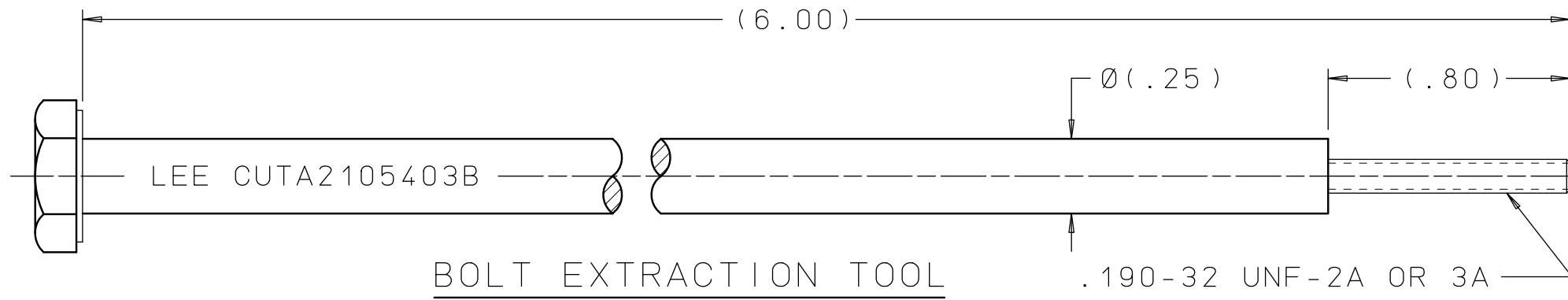
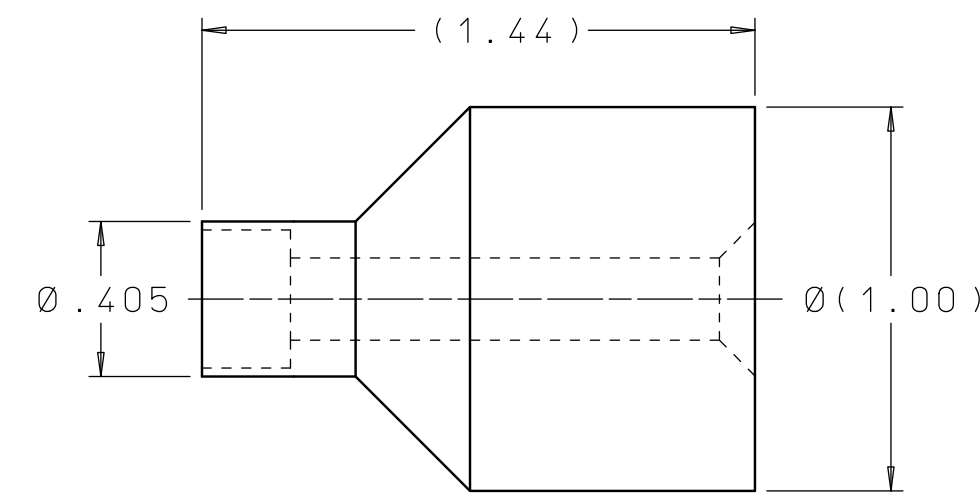


CUTA4066205B

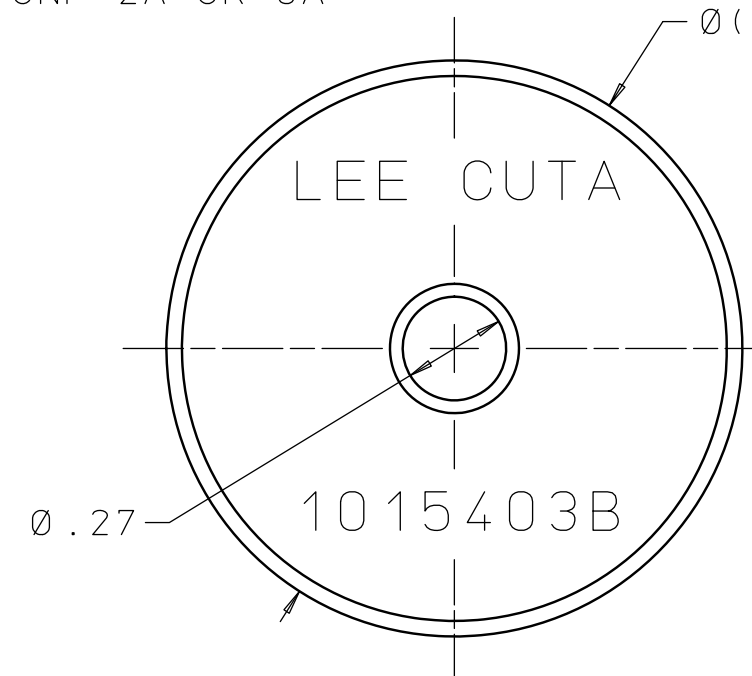
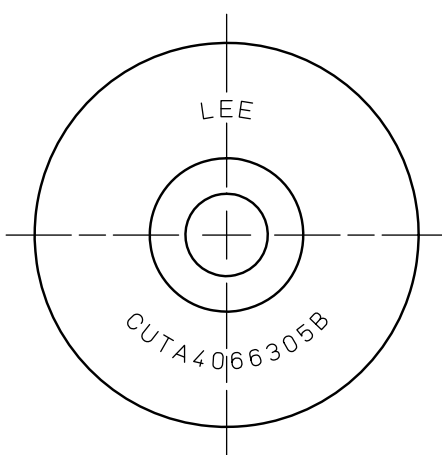
REV	DATE	BY	DESCRIPTION
A	10-05-82	DFW	INITIAL RELEASE
2	07-08-08	KD	REDRAWN TO CAD.



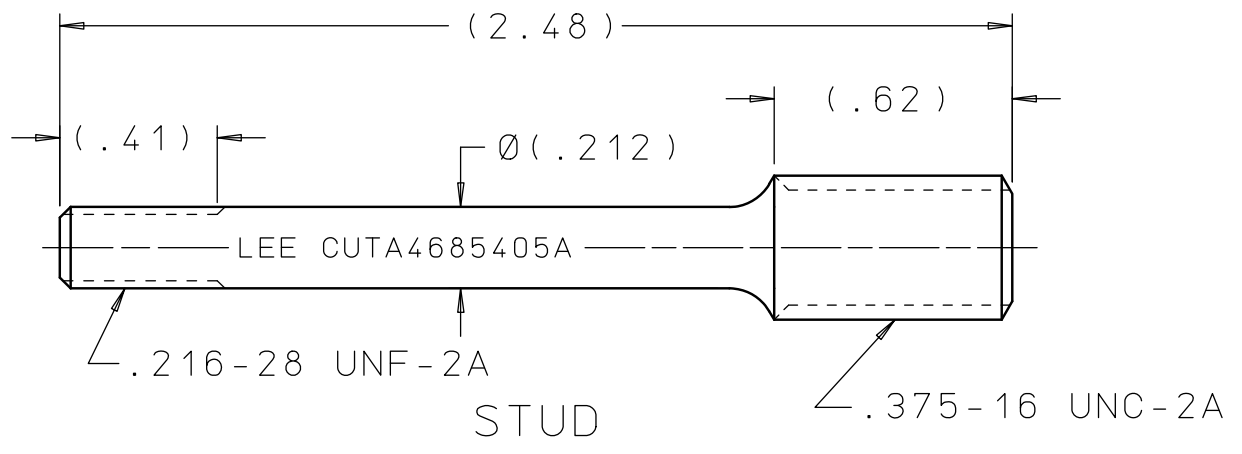
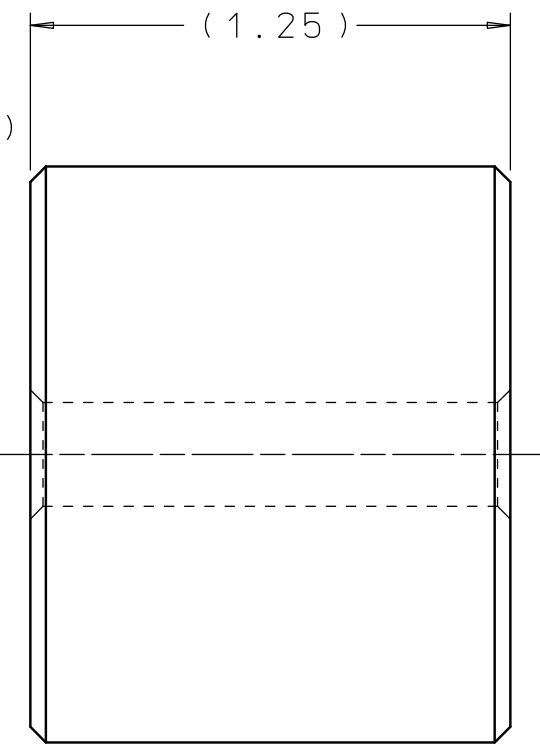
BOLT EXTRACTION TOOL



EXTRACTION SLEEVE



STRIKER



STUD

EXTRACTION INSTRUCTIONS:

1. AFTER SLIDING EXTRACTION SLEEVE ONTO STUD, THREAD STUD INTO PISTON ASSEMBLY.
2. THREAD OTHER END OF STUD FULLY INTO RFO PIN. IF STUD BINDS UP IN PIN, CLEAN UP THREADS IN PIN WITH .216-28 UNF TAP.
3. OPERATE PUMP TO EXTRACT PIN.
4. THREAD BOLT, WITH STRIKER, FULLY INTO RFO PLUG AND REMOVE BY TAPPING THE STRIKER AGAINST THE BOLT HEAD.

PROPRIETARY ITEM

This document contains proprietary information and is submitted upon the express condition that the information contained herein will not be used directly or indirectly in any way detrimental to the interests of The Lee Company, and/or in violation of regulation DAR 7-104.9(a)(1 July 1974). et seq.

CUTD4066205
REFERENCE

DWG NO: CUTA4066205B	NOTES AND DIMENSIONS SHOWN HERE ON ARE FOR INSPECTION IDENTIFICATION ONLY. ALL MANUFACTURING RIGHTS RESERVED.	DRAWN BY: DFW	10-05-82	LEE PLUG, EXTRACTION SET RFO	
	EXTERNAL CORNER RAD: INTERNAL FILLET RAD:	CHK'D BY: RJG	04-11-83	THE LEE COMPANY	
	SURFACE FINISH ✓ ALL OVER DIMENSIONS ARE IN INCHES	APP'D BY: SEA	04-11-83	WESTBROOK, CT 06498	
	TOLERANCES 2 PLACES ±.015 3 PLACES ±.005 ANGLES ±5°	MAT:		SIZE: B	CAGE CODE: 92555
	H.T.:				REV: A
	FINISH:			DWG SCALE: NONE	SHEET 1 OF 1