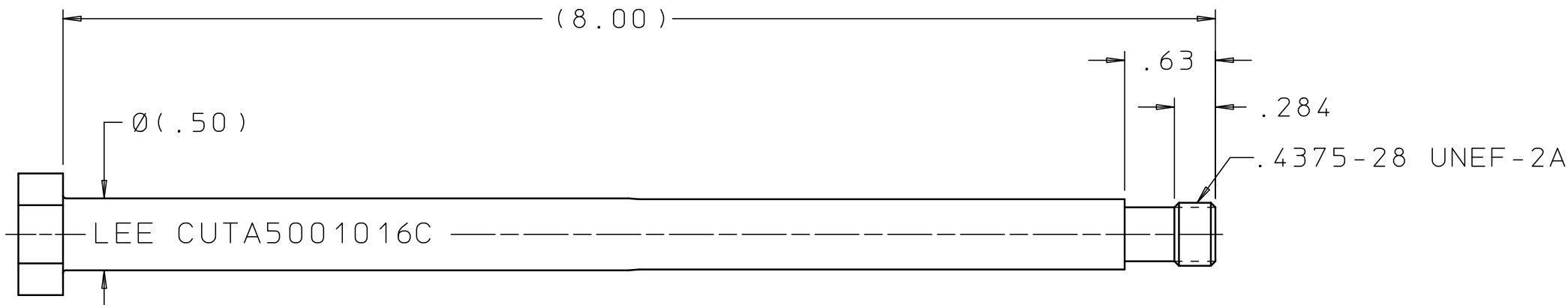
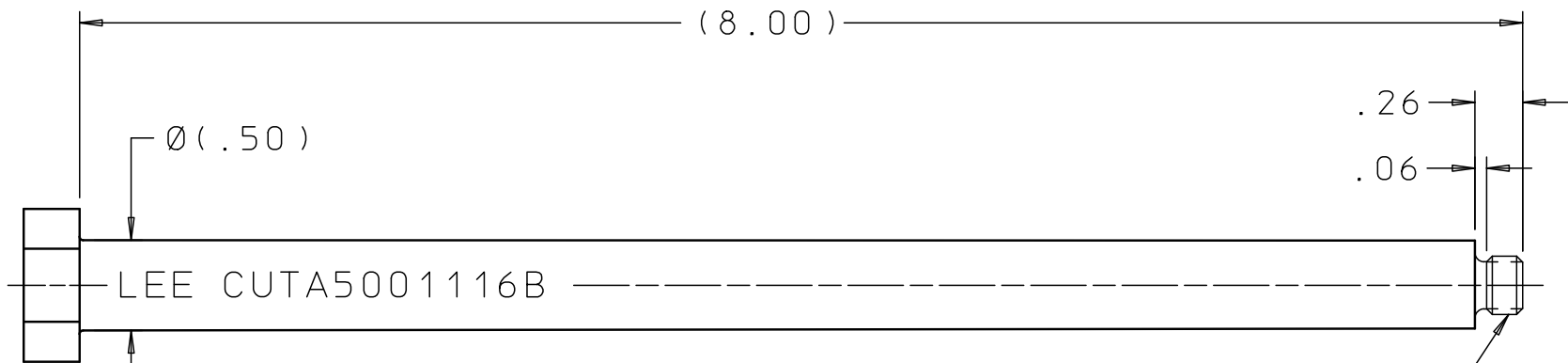


CUTA5000116C

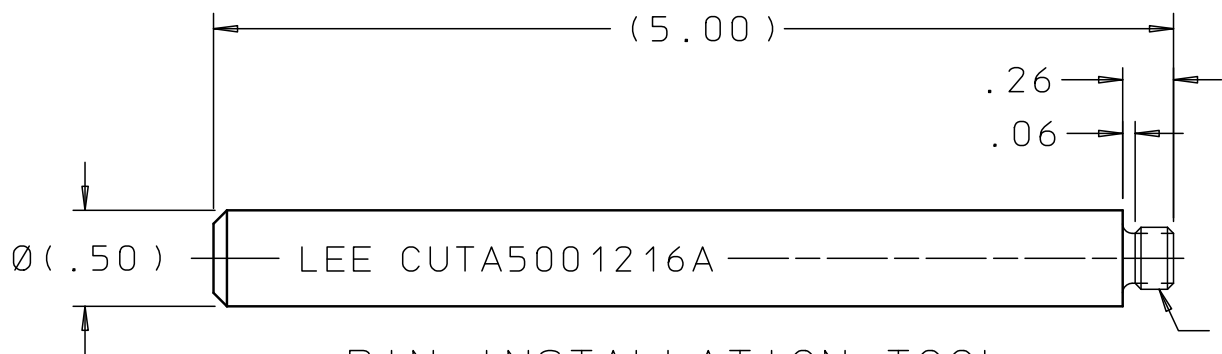


BODY INSTALLATION & EXTRACTION TOOL



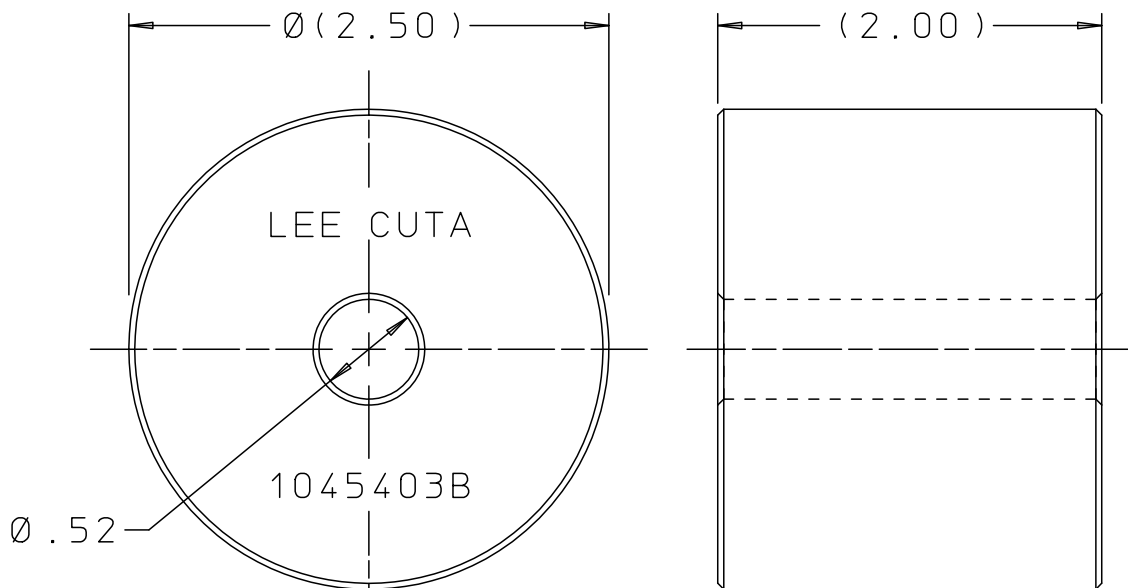
PIN EXTRACTION TOOL

.375-24 UNF-2A MODIFIED
MAJOR Ø: .353 MAX
MINOR Ø: .324 MAX



PIN INSTALLATION TOOL

.375-24 UNF-2A MODIFIED
MAJOR Ø: .353 MAX
MINOR Ø: .324 MAX



STRIKER

INSTALLATION & EXTRACTION TOOL SET FOR:

.500 LEE FLOSET
.500 PRI REVERSE

REV	DATE	BY	DESCRIPTION
D3	08-06-10	KD	BODY INST/EXTR TOOL: UPDATED HEX. ADDED .284. DELETED .35. PIN EXTR TOOL: UPDATED HEX. STRIKER: Ø(2.50) WAS Ø2.50 & (2.00) WAS 2.00.
E	11-01-12	KD	BODY INST & EXTR TOOL; REMOVED HEX. ADDED 2 FLATS. PIN EXTR TOOL; REMOVED HEX. ADDED 2 FLATS. MAJOR Ø: .354 MAX WAS .357 MAX. PIN INSTAL TOOL .354 MAX WAS .357 MAX.
2	11-23-21	KD	PIN INSTALLATION & EXTRACTION TOOLS: ADDED MINOR Ø: .324 MAX. MAJOR Ø: .353 WAS Ø.357 MAX.

PROPRIETARY ITEM

This document contains proprietary information and is submitted upon the express condition that the information contained herein will not be used directly or indirectly in any way detrimental to the interests of The Lee Company, and/or in violation of regulation DAR 7-104.9(a)(1 July 1974), et seq.

CUTD0101750

REFERENCE

DWG NO: CUTA5000116C

NOTES AND DIMENSIONS SHOWN HERE ON
ARE FOR INSPECTION IDENTIFICATION ONLY.
ALL MANUFACTURING RIGHTS RESERVED.

EXTERNAL CORNER RAD:
INTERNAL FILLET RAD:

SURFACE FINISH ✓ ALL OVER
DIMENSIONS ARE IN INCHES

TOLERANCES
2 PLACES 3 PLACES ANGLES
±.015 ±.005 ±5°

DRAWN BY: LNJ 04-09-81

CHK'D BY: MWA 05-11-81

APP'D BY: SEA 05-28-81

MAT:

H.T.:

FINISH:

LEE TOOL SET
INSTALLATION AND EXTRACTION



THE LEE COMPANY
WESTBROOK, CT 06498

SIZE	CAGE CODE	DWG NO.	REV
B	92555	CUTA5000116C	E

DWG SCALE: NONE SHEET 1 OF 1