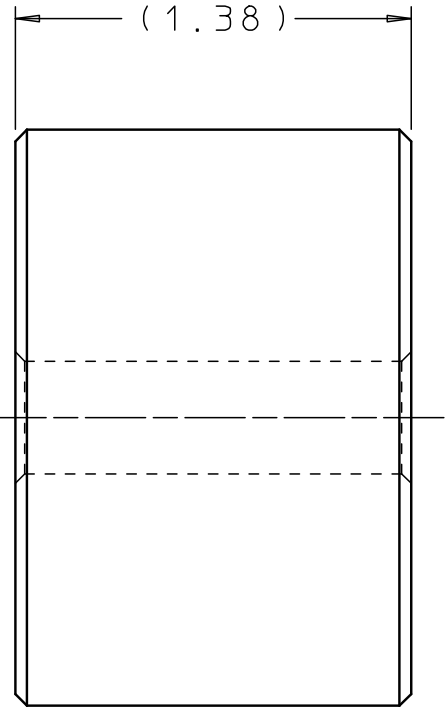
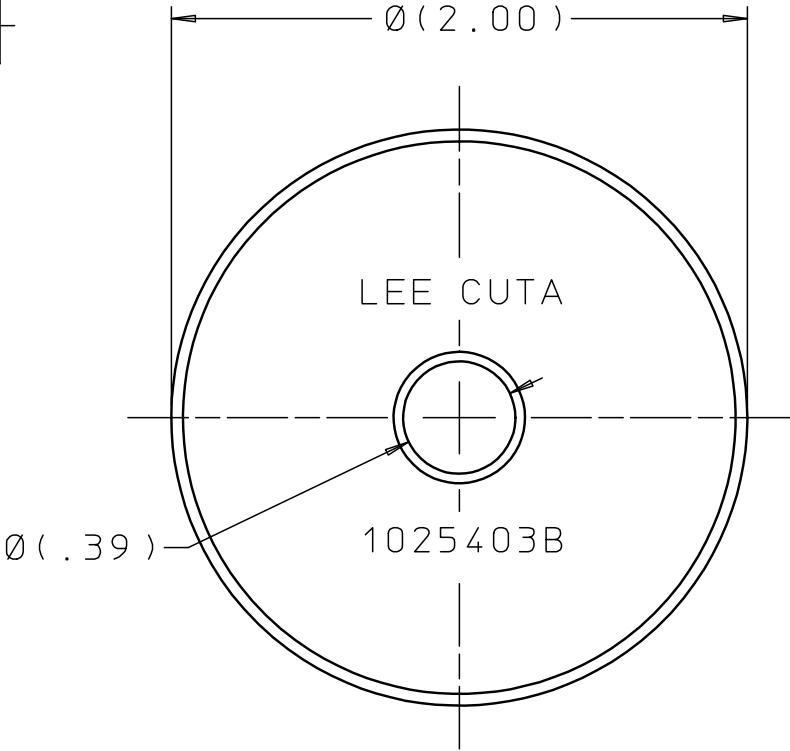
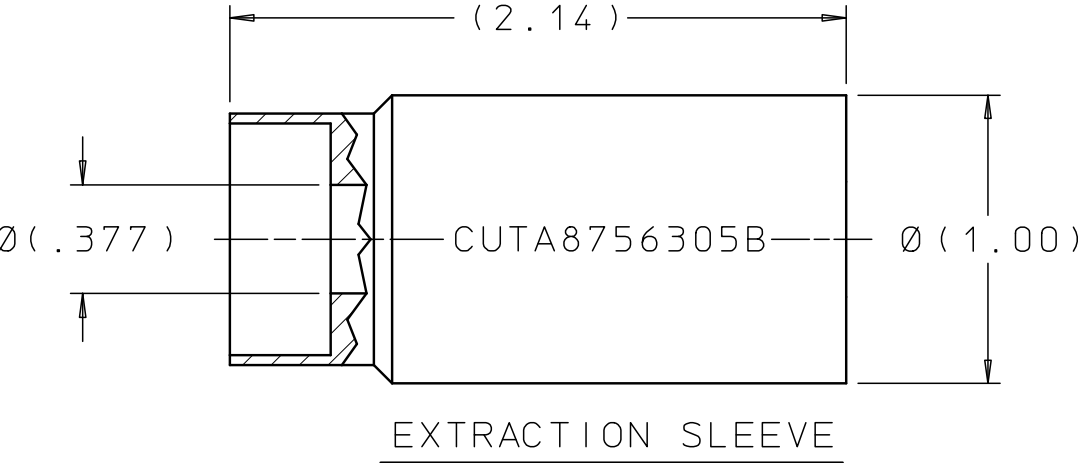
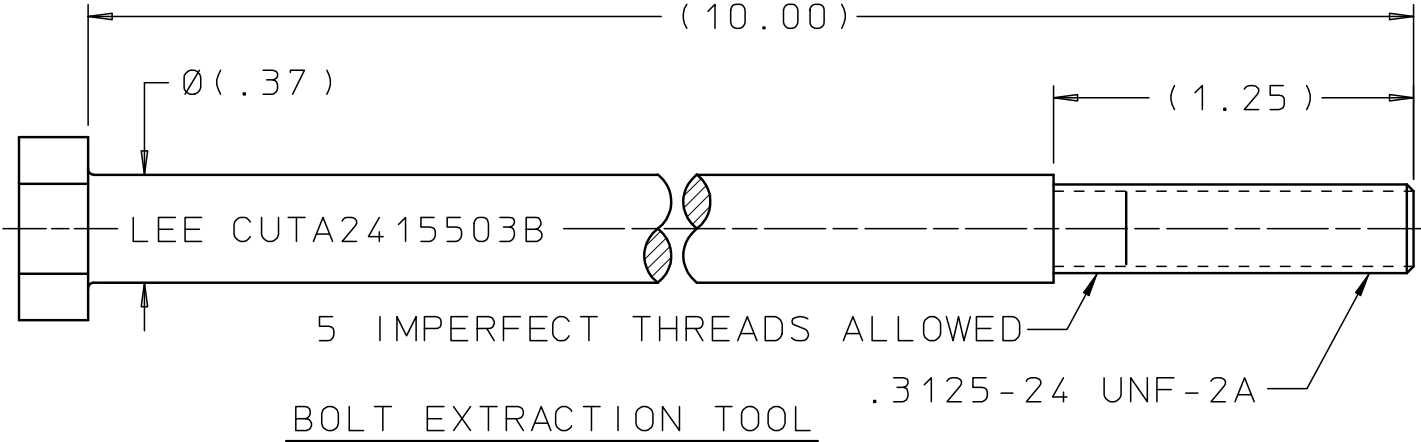


CUTA8756205B

REV	DATE	BY	DESCRIPTION
A	10-05-82	DFW	INITIAL RELEASE
2	02-22-08	KD	REDRAWN TO CAD.
3	04-14-08	KD	ADDED MARKING TO EXTRACTION SLEEVE AND STUD.
B	02-21-18	KD	UPDATED EXTRACTION TOOL.



EXTRACTION INSTRUCTIONS:


1. AFTER SLIDING EXTRACTION SLEEVE ON TO STUD, THREAD STUD INTO PISTON ASSEMBLY.
2. THREAD OTHER END OF STUD FULLY INTO RFO PIN. IF STUD BINDS UP IN PIN, CLEAN UP THREADS IN PIN WITH .375-24 UNF TAP.
3. OPERATE PUMP TO EXTRACT PIN.
4. THREAD BOLT WITH STRIKER FULLY INTO RFO PLUG AND REMOVE BY TAPPING THE STRIKER AGAINST THE BOLT HEAD.

PROPRIETARY ITEM

This document contains confidential, trade secret information which is proprietary to The Lee Company, and is submitted upon the express condition that neither it, nor our products, will be used directly or indirectly in any way detrimental to the interests of The Lee Company, such as disclosure to others or replication of our products, and/or in violation of 18 U.S.C. 1905 (TSA), 5 U.S.C. 552 (FOIA), E.O.12600 of 6/23/87, 18 U.S.C. 1832, and C.G.S.A. (CT) Chapter 625 sec. 35-50 thru 35-58.

CUTD8756205

REFERENCE

DWG NO: CUTA8756205B	NOTES AND DIMENSIONS SHOWN HERE ON ARE FOR INSPECTION IDENTIFICATION ONLY. ALL MANUFACTURING RIGHTS RESERVED.		DRAWN BY:	DFW	10-05-82	LEE EXTRACTION SET, RFO PLUG				
			CHK'D BY:	RJG	03-30-83					
	EXTERNAL CORNER RAD: INTERNAL FILLET RAD:  SURFACE FINISH ✓ ALL OVER DIMENSIONS ARE IN INCHES  TOLERANCES 2 PLACES 3 PLACES ANGLES ±.015 ±.005 ±5°		APP'D BY:	SEF	03-30-83	 THE LEE COMPANY WESTBROOK, CT 06498				
			MAT:							
			H.T.:				SIZE	CAGE CODE	DWG NO.	REV
			FINISH:				B	92555	CUTA8756205B	B
						DWG SCALE: NONE		SHEET 1 OF 1		