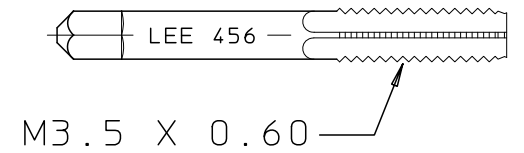
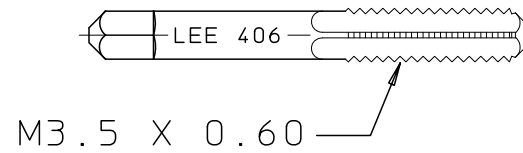
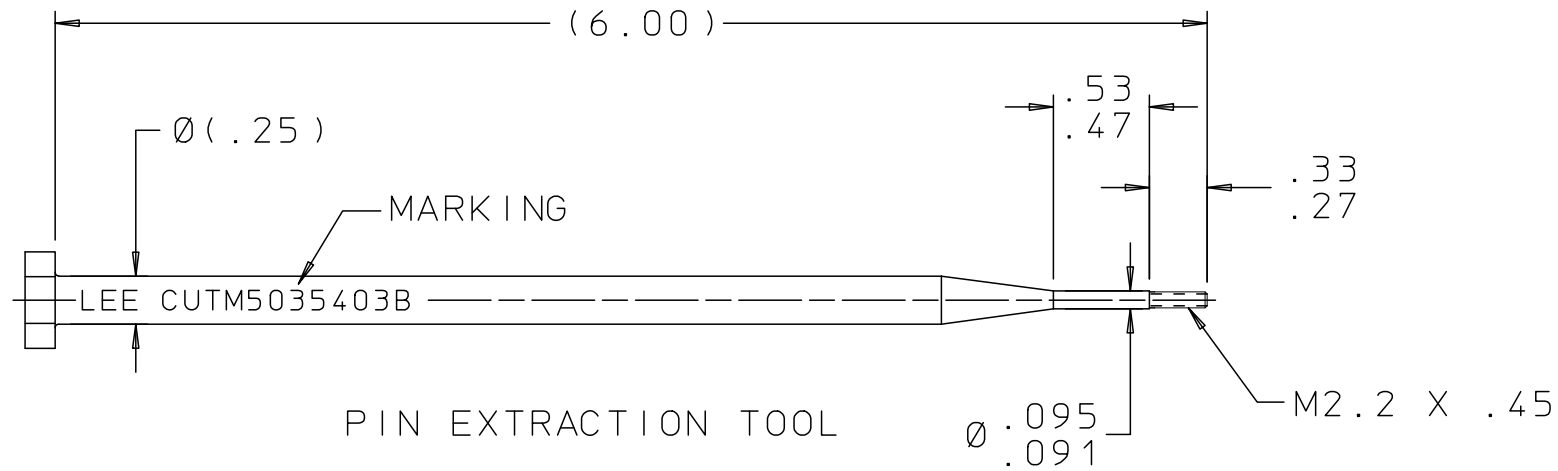


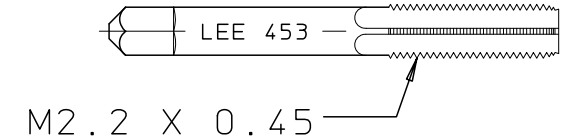
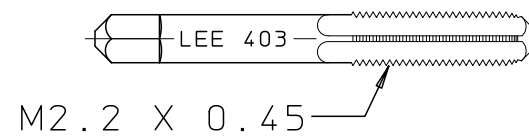
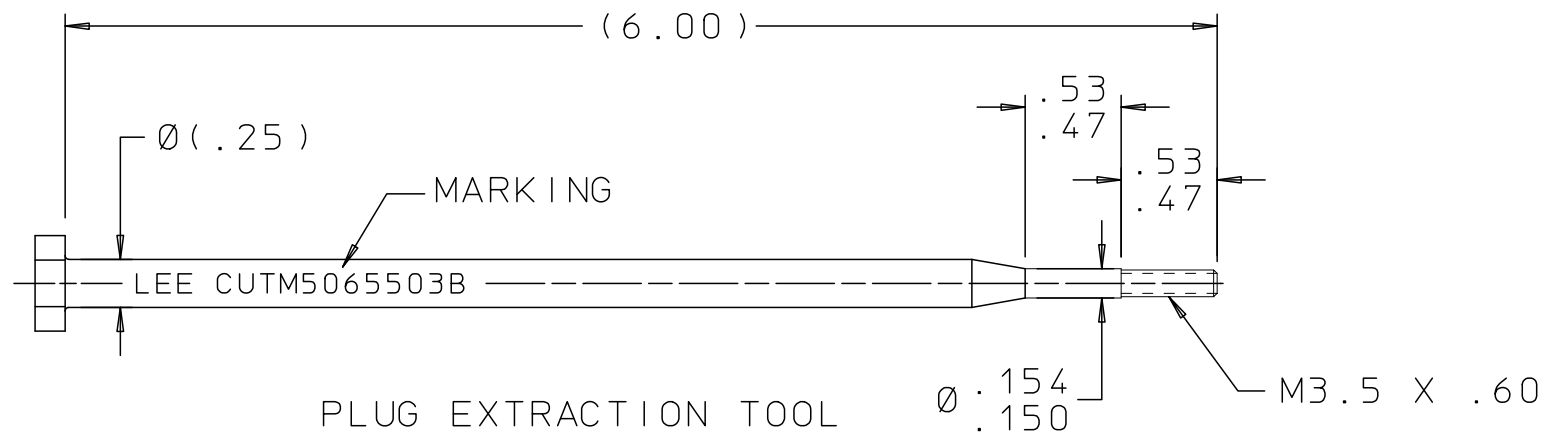
# CUTM0400103B

REV	DATE	BY	DESCRIPTION
A	08-11-76	KMS	INITIAL RELEASE
2	07-27-78	F P	ADDED REFERENCE
B	07-22-91	GMR	REDRAWN TO CAD; WAS WORD DRAWING
2	08-13-04	KD	REMOVED REV LETTERS FROM MARKINGS.
C	04-23-13	KD	PIN EXTR TOOL; REMOVED HEX. ADDED 2 FLATS. ADDED .53-.47. Ø.095-.091 WAS Ø.093. PLUG EXTR TOOL; REMOVED HEX. ADDED 2 FLATS. ADDED .53-.47. Ø.154-.150 WAS Ø.152. STRIKER; Ø(1.50) WAS Ø1.50 & (1.25) WAS 1.25.



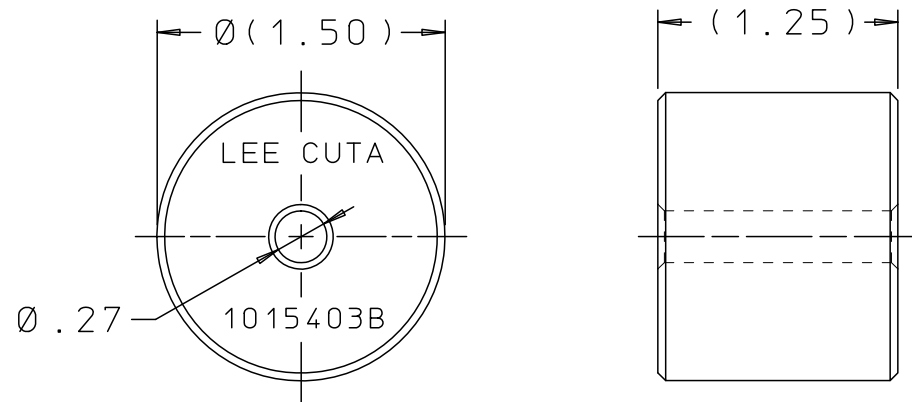
STARTER TAP  
PLUG EXTRACTION  
CUTM4065503B

BOTTOMING TAP  
PLUG EXTRACTION  
CUTM4565503B



STARTER TAP  
PIN EXTRACTION  
CUTM4035403B

BOTTOMING TAP  
PIN EXTRACTION  
CUTM4535403B



STRIKER

## PROPRIETARY ITEM

This document contains proprietary information and is submitted upon the express condition that the information contained herein will not be used directly or indirectly in any way detrimental to the interests of The Lee Company, and/or in violation of regulation DAR 7-104.9(a)(1 July 1974), et seq.

CUTD0200130

REFERENCE

DWG NO.: CUTM0400103B

NOTES AND DIMENSIONS SHOWN HERE ON ARE FOR INSPECTION IDENTIFICATION ONLY. ALL MANUFACTURING RIGHTS RESERVED.

EXTERNAL CORNER RAD:  
INTERNAL FILLET RAD:

SURFACE FINISH ✓ ALL OVER  
DIMENSIONS ARE IN INCHES

TOLERANCES  
2 PLACES ±.015 3 PLACES ±.005 ANGLES ±5°

DRAWN BY: T D 12-16-80

CHK'D BY: RJG 01-27-81

APP'D BY: SEA 01-30-81

MAT:

H.T.:

FINISH:

LEE TOOL SET,  
METRIC PLUG EXTRACTION



THE LEE COMPANY  
WESTBROOK, CT 06498

SIZE	CAGE CODE	DWG NO.	REV
B	92555	CUTM0400103B	C

DWG SCALE: NONE

SHEET 1 OF 1