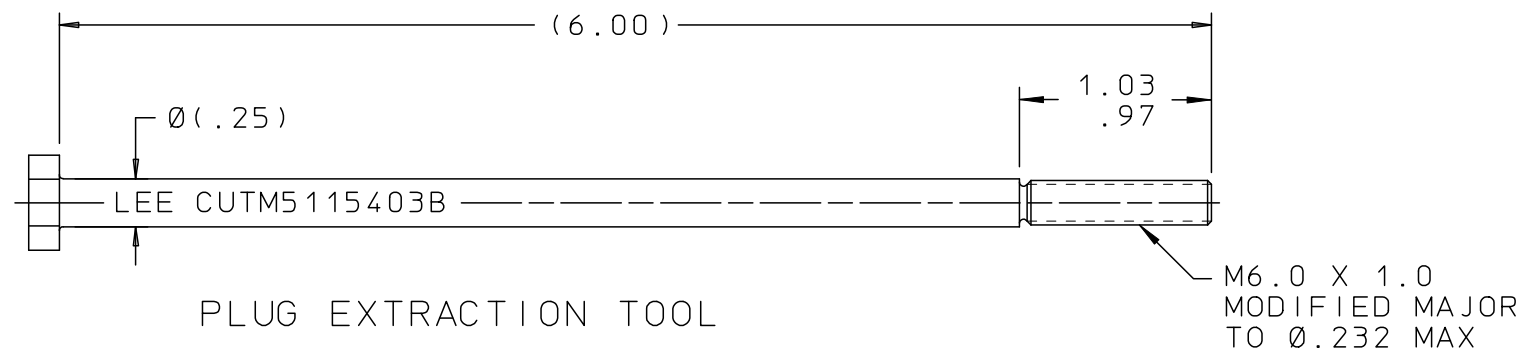
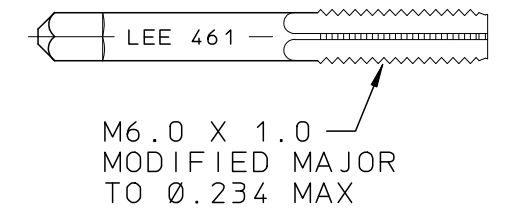
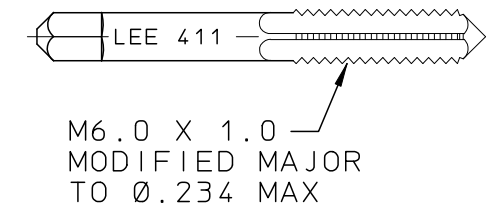
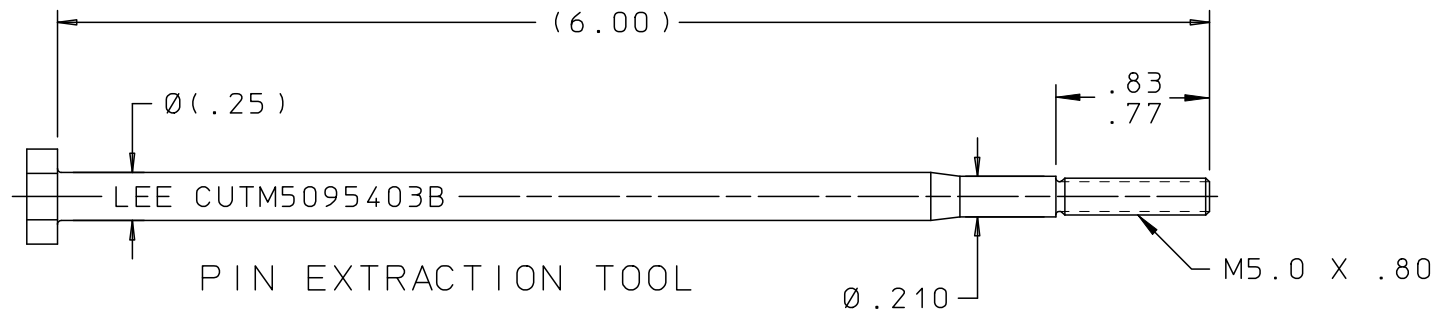


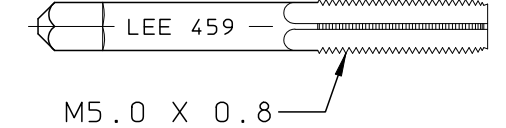
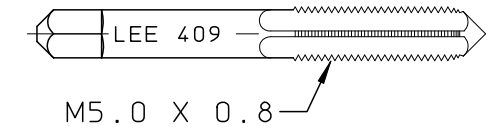
CUTM0650103B

REV	DATE	BY	DESCRIPTION
A	12-16-80	T D	INITIAL RELEASE
B	07-26-91	GMR	REDRAWN TO CAD; WAS WORD DRAWING
2	08-13-04	KD	REMOVED REV LETTERS FROM MARKINGS.
C	10-20-15	KD	UPDATED PIN & PLUG EXTRACTION TOOL; 2 FLATS WAS HEX.



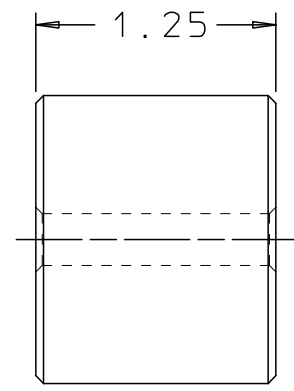
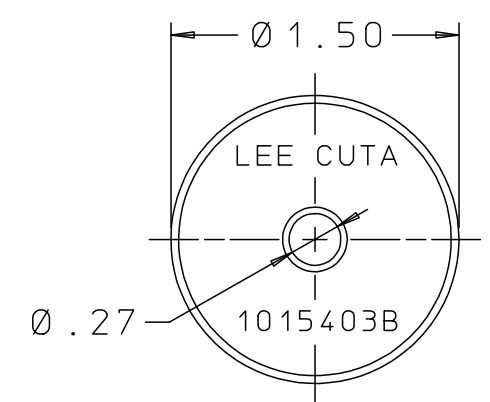
STARTER TAP
PLUG EXTRACTION
CUTM4115403B

BOTTOMING TAP
PLUG EXTRACTION
CUTM4615403B



STARTER TAP
PIN EXTRACTION
CUTM4095403B

BOTTOMING TAP
PIN EXTRACTION
CUTM4595403B



STRIKER

PROPRIETARY ITEM

This document contains proprietary information and is submitted upon the express condition that the information contained herein will not be used directly or indirectly in any way detrimental to the interests of The Lee Company, and/or in violation of regulation DAR 7-104.9(a)(1 July 1974), et seq.

CUTD0200180
REFERENCE

DWG NO: CUTM0650103B	NOTES AND DIMENSIONS SHOWN HERE ON ARE FOR INSPECTION IDENTIFICATION ONLY. ALL MANUFACTURING RIGHTS RESERVED.	DRAWN BY: T D	12-16-80	LEE TOOL SET, METRIC PLUG EXTRACTION	
	EXTERNAL CORNER RAD: INTERNAL FILLET RAD:	CHK'D BY: RJG	01-27-81	THE LEE COMPANY WESTBROOK, CT 06498	
	SURFACE FINISH ✓ ALL OVER DIMENSIONS ARE IN INCHES	APP'D BY: SEA	01-30-81		
	TOLERANCES 2 PLACES ±.015 3 PLACES ±.005 ANGLES ±5°	MAT:	H.T.:	FINISH:	SIZE: B
				DWG NO.: CUTM0650103B	REV: C
				DWG SCALE: NONE SHEET 1 OF 1	