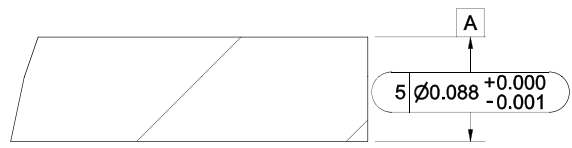
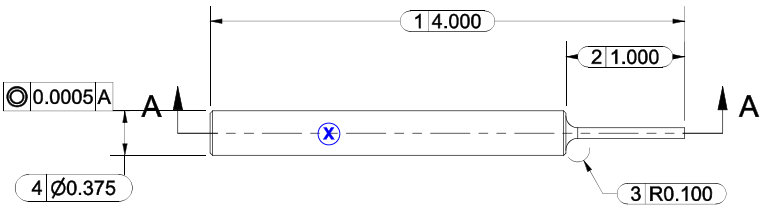
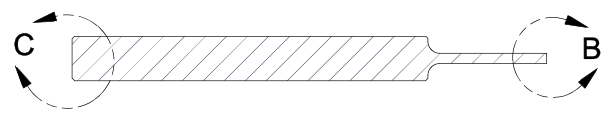


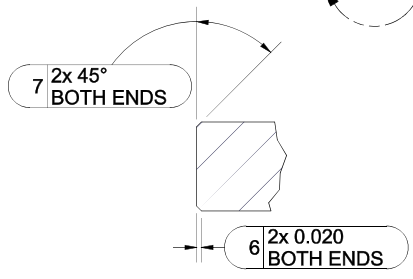
Revision Info.	
Rev	Change Description
A3	MINOR REVISION ~ Added concentricity call out



DETAIL B  
SCALE 10 : 1




SECTION A-A  
SCALE 1 : 1



DETAIL C  
SCALE 2 : 1

- NOTES:
1. REMOVE ALL BURRS AND SHARP EDGES.
  2. MARK WITH PART NUMBER AND REVISION LETTER. (X)
  3. NO VENDOR MARKING PERMITTED.

THIRD ANGLE PROJECTION	UNLESS OTHERWISE SPECIFIED EXTERNAL RADIUS R INTERNAL FILLET R SURFACE FINISH MAXIMUM 63	Author Vernon, Jon Engineer M. Foyreau Origination Date 8/16/2004 Modification Date 7/28/2023	 <b>The Lee Company</b> Industrial Microhydraulics Group Technical Center Westbrook, CT 06498 / U.S.A.
CODE IDENT NO. NUMBER OS730	CRITICAL CHARACTERISTICS	MATL. A2 Tool Steel H.T. Rc 50-60	
Sheet Size <b>B</b>	PROPRIETARY NOTICE <small>This document contains confidential, trade secret information which is proprietary to The Lee Company, and is intended only for the use of the recipient. It is not to be reproduced, copied, or otherwise disseminated without the prior written consent of The Lee Company. In the event of a conflict between this notice and any other notice, this notice shall prevail. © 2004 The Lee Company. All rights reserved. DYNAL B.O. 12660 of 6/23/87, 18 U.S.C. 1832, and C.O.S.A. (CT) Chapter 665 sec. 55-59 from 35-58.</small>	FINISH <b>DIMENSIONS ARE IN INCHES</b> TOLERANCES 2PL ±.01 3PL ±.003 4PL ±.0010 ANG ±2°	TITLE: <b>INSTALLATION TOOL, LEE CHECK, 2.5mm PRESS-IN, FORWARD</b>  -FMF / Used On- -Lee Chek 2.5 mm PRESS IN
		DO NOT SCALE DRAWING	PART # <b>CCRT00242775</b> REV. State Released SHEET 1 of 1 SCALE: 1:1