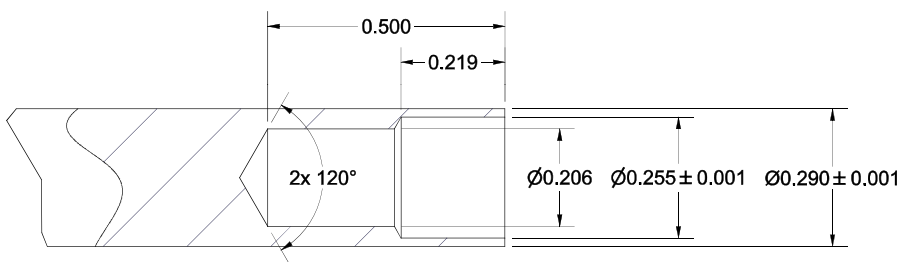
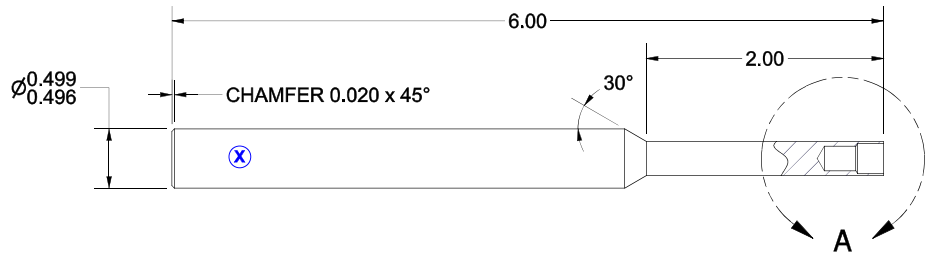



4 3 2 1

Revision Info.	
Rev	Change Description
A	Released



DETAIL A
SCALE 4 : 1

- NOTES:
 1. REMOVE ALL BURRS AND SHARP EDGES.
 2. MARK WITH PART NUMBER AND REVISION LETTER. (X)

THIRD ANGLE PROJECTION	UNLESS OTHERWISE SPECIFIED EXTERNAL RADIUS R INTERNAL FILLET R SURFACE FINISH MAXIMUM 63	Author Vernon, Jon Engineer D. Courcy Origination Date 4/26/2013 Modification Date 7/12/2017	 The Lee Company Industrial Microhydraulics Group Technical Center Westbrook, CT 06498 / U.S.A.
CODE IDENT NO. OS730	CRITICAL CHARACTERISTICS	MATL. A2 Tool Steel H.T. Rc 60-62	
Sheet Size B	PROPRIETARY NOTICE <small>This document contains confidential, trade secret information which is proprietary to The Lee Company, and is intended only for the specific conditions that apply to the use of the product. It will be used directly or indirectly in any way detrimental to the interests of The Lee Company, such as disclosure to others or reproduction of our products, and/or in violation of 18 U.S.C. 1905 (2012), 18 U.S.C. 1911 (2012), 18 U.S.C. 1912, and C.O.S.A. (CT) Chapter 665 sec. 55-59 from 55-58.</small>	FINISH DIMENSIONS ARE IN INCHES TOLERANCES 2PL ±.01 3PL ±.003 4PL ±.0010 ANG ±2*	TITLE: INSTALLATION TOOL, 855 LC SERIES, PRESS IN, REVERSE
		DO NOT SCALE DRAWING	-FMF / Used On- The Lee Company PART # CCRT0065726S REV. State Released SHEET 1 of 1 SCALE: 1:1