

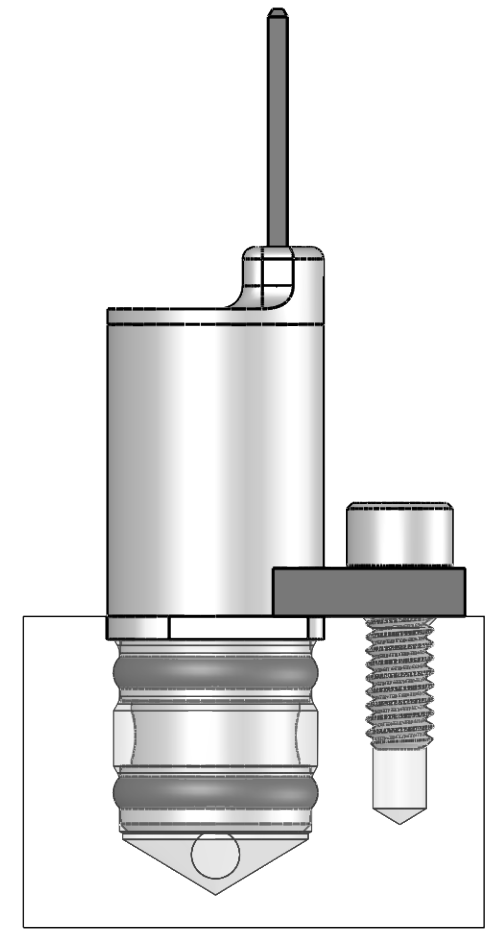
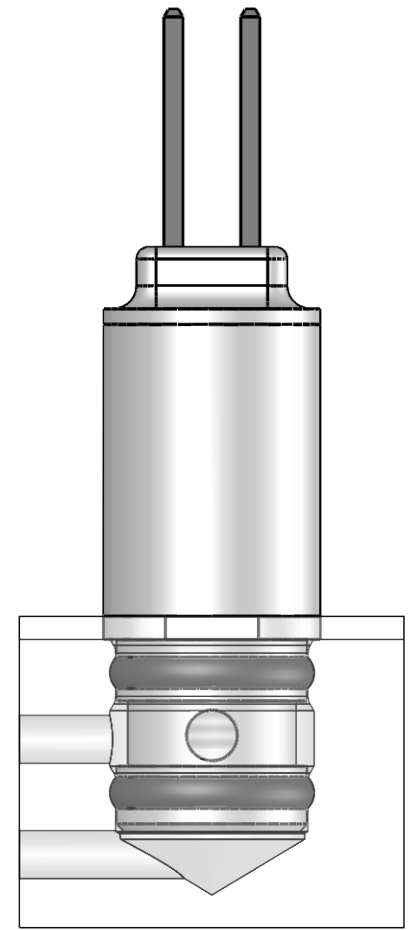
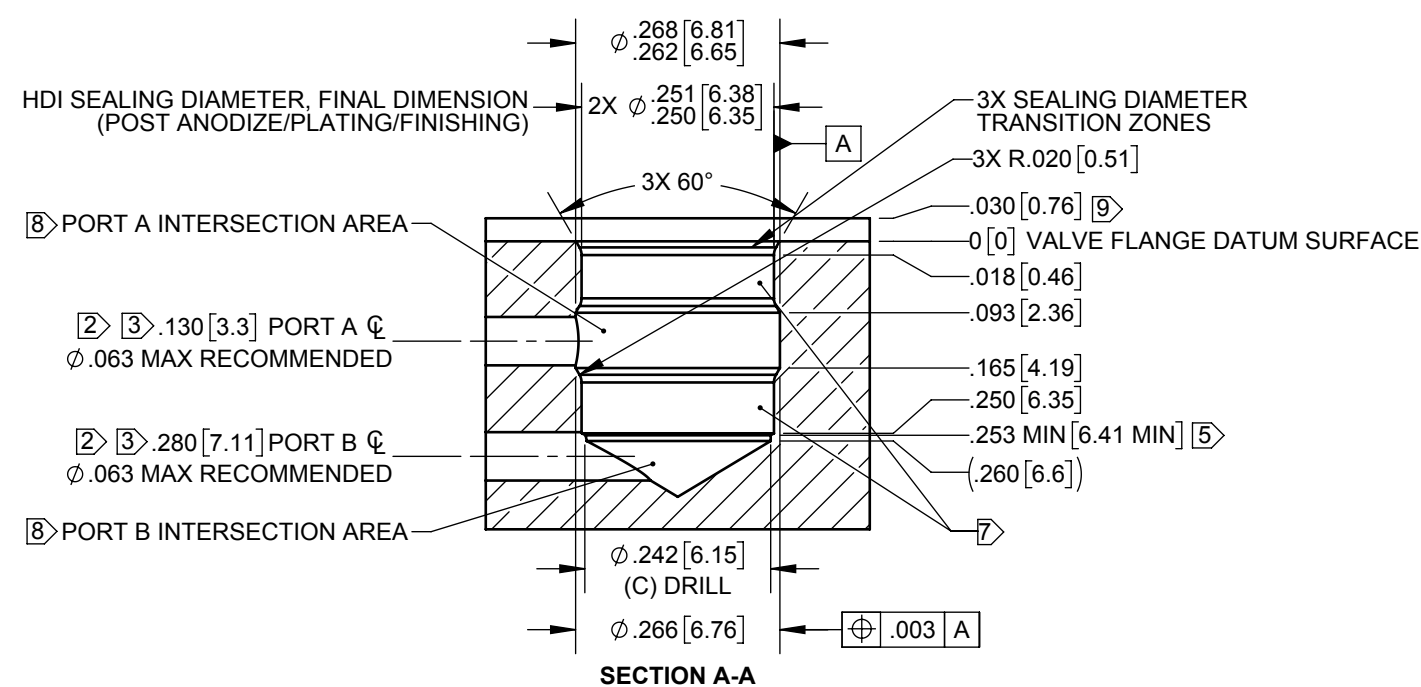
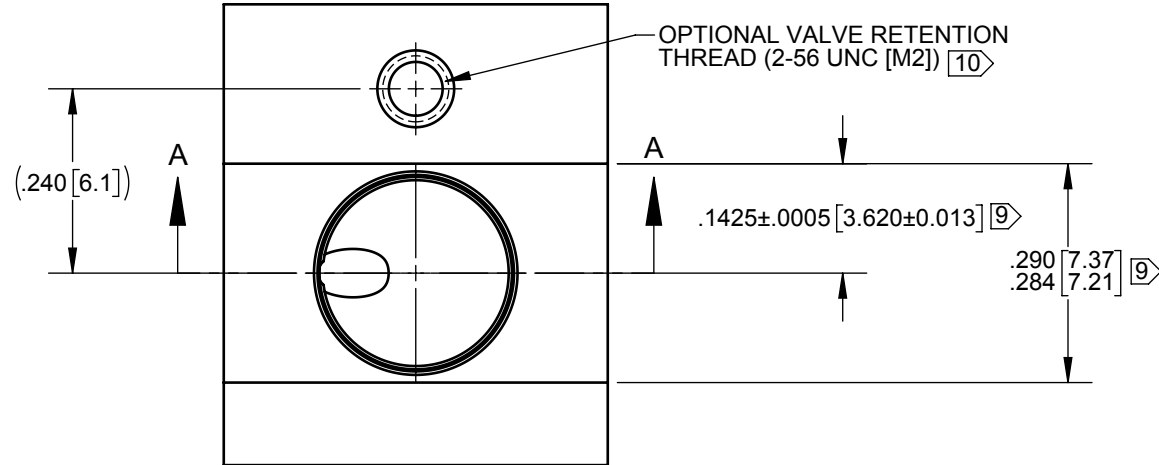
DWG NO. LCFX0300250B

REV. B5

PROPRIETARY NOTICE

This document contains confidential, trade secret information which is proprietary to The Lee Company, and is submitted upon the express condition that neither it, nor our products, will be used directly or indirectly in any way detrimental to the interests of The Lee Company, such as disclosure to others or replication of our products, and/or in violation of 18 U.S.C. 1905 (TSA), 5 U.S.C. 552 (FOIA), E.O.12600 of 6/23/87, 18 U.S.C. 1832, and C.G.S.A. (CT) Chapter 625 sec. 35-50 thru 35-58.

REV	DATE	BY	DESCRIPTION
B5	11/22/2019	TLC	ADDED NOTE 12 & EXPORT CONTROL NO.



- NOTES:
- BOSS IS FOR USE WITH THE LEE COMPANY HDI PLUG-IN 2 PORT VALVES.
 - TO PREVENT O-RING DAMAGE, CROSS DRILLED HOLES MUST NOT INTERSECT SEALING DIAMETER TRANSITION ZONES.
 - ALTERNATIVE METHODS OF PASSAGE PERMITTED.
 - FOR MINIMUM SPACING, LOCATE VALVES ON .300 [7.62] CENTERS.
 - INSTALLED VALVE CLEARANCE.
 - VALVE BOSS MAY BE CREATED USING THE LEE COMPANY CUTTING TOOL P/N TTTA0000250B REVISION A.
 - O-RING SEALING SURFACE:
SMOOTH BLENDS ONLY TO THIS DIAMETER.
NO BURRS PERMITTED.
SURFACE FINISH: 32 MICROINCHES [0.8 MICROMETERS] MAXIMUM.
AXIAL SCRATCHES NOT PERMITTED.
 - INTERSECTION AREA:
SURFACE FINISH: 250 MICROINCHES [6.3 MICROMETERS] MAXIMUM.
RAISED ATTACHED BURRS: .002 [0.05] MAXIMUM.
 - OPTIONAL VALVE ORIENTATION SLOT.
 - CAUTION: DO NOT APPLY PRESSURE ABOVE 15 PSIG [103 kPag] TO PORT B INLET WITHOUT VALVE RETENTION.
 - MAXIMUM FLOW OCCURS WHEN VALVE PORTS ARE IN LINE WITH MANIFOLD PORTS.
 - INSTALLATION INFORMATION: SEE THE LEE COMPANY DOCUMENT LDOC0201050.

-FMF-
The Lee Company
Essex, CT

WARNING
EXPORT CONTROLLED BY
EAR [50 USC 2401] ECCN=EAR99

NOTES AND DIMENSIONS SHOWN HEREIN ARE FOR
INSPECTION IDENTIFICATION ONLY ALL
MANUFACTURING RIGHTS ARE RESERVED

REF. NO:

DO NOT SCALE DRAWING.
UNLESS OTHERWISE SPECIFIED (UOS):
DIMENSIONS ARE IN INCHES.
[mm] ARE FOR REFERENCE ONLY.

TOLERANCES:
.XX ± .015
.XXX ± .005
.XXXX ± .001
ANGLES ± 5°
EXTERNAL CORNER: .01 MAX BREAK
INTERNAL CORNER: .01 MAX BREAK

SURFACE FINISH $\sqrt{63}$

DRAWN BY	AKD	11/20/2018
CHECKED BY	RJT	11/22/2019
APPROVED BY	MTS	11/22/2019
MATERIAL:		
THIRD ANGLE PROJECTION		

TITLE
BOSS, HDI-PI-2 PORT-2W

The Lee Company
55 Bokum Rd., Essex, CT 06426
www.theleeco.com

SIZE	DWG NO.	REV.
B	LCFX0300250B	B5

SCALE: 4:1 CODE IDENT NO. ONZR4 SHEET 1 OF 1