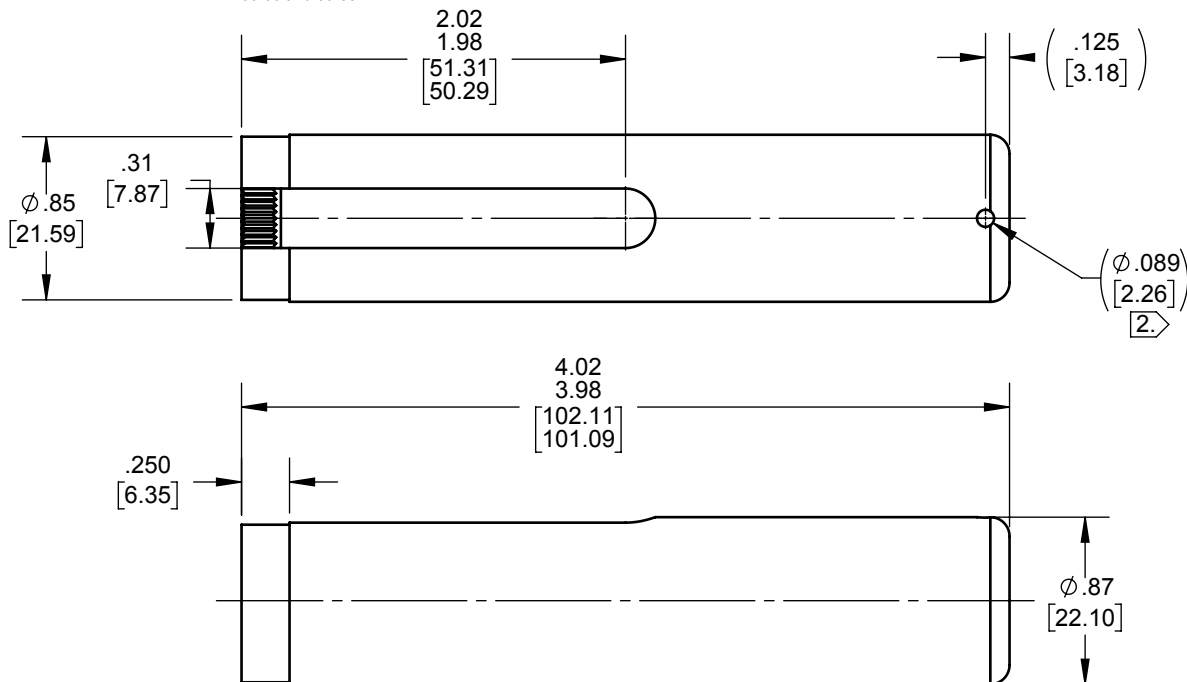
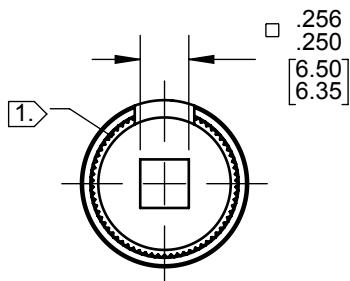


DWG NO. **LSWX0610000A**REV. **B1**

PROPRIETARY NOTICE
This document contains confidential, trade secret information which is proprietary to The Lee Company, and is submitted upon the express condition that neither it, nor our products, will be used directly or indirectly in any way detrimental to the interests of The Lee Company, such as disclosure to others or replication of our products, and/or in violation of 18 U.S.C. 1905 (TSA), 5 U.S.C. 552 (FOIA), E.O. 12600 of 6/23/87, 18 U.S.C. 1832, and C.G.S.A. (CT) Chapter 625 sec. 35-50 thru 35-58.

REV	DATE	BY	DESCRIPTION
B1	02/20/2017	CJC	LEGACY TO PDM

LSWX0610000AB
THE LEE CO.
ESSEX, CT

LASER MARKING**3.**

LASER
MARKING VIEW

3.**NOTES:**

- 1.** BROACH TO FIT: THE LEE CO. MIV MANIFOLD MOUNT VALVE.
- 2.** THRU ONE SIDE ONLY.
- 3.** LASER MARKING SHOWN IN APPROXIMATE LOCATION AND ORIENTATION.

-FMF-
THE LEE CO.
ESSEX, CT

DO NOT SCALE DRAWING.
UNLESS OTHERWISE SPECIFIED (UOS):
DIMENSIONS ARE IN INCHES.
[mm] ARE FOR REFERENCE ONLY.

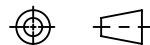
TOLERANCES:
.XX ± .015
.XXX ± .005
.XXXX ± .001
ANGLES ± 5°
EXTERNAL CORNER: .01 MAX BREAK
INTERNAL CORNER: .01 MAX BREAK

63
SURFACE FINISH ✓

DRAWN BY	CJC	02/20/2017
CHECKED BY	CJC	02/20/2017
APPROVED BY	BWH	02/20/2017

MATERIAL:
STAINLESS STEEL

THIRD ANGLE PROJECTION



TITLE
SPLINED WRENCH-MIV-2 WAY



The Lee Company
55 Bokum Rd., Essex, CT 06426
www.theleeco.com

SIZE A	DWG NO. LSWX0610000A	REV. B1
------------------	--------------------------------	-------------------

SCALE: 1:1	CODE IDENT NO. ONZR4	SHEET 1 OF 1
------------	----------------------	--------------