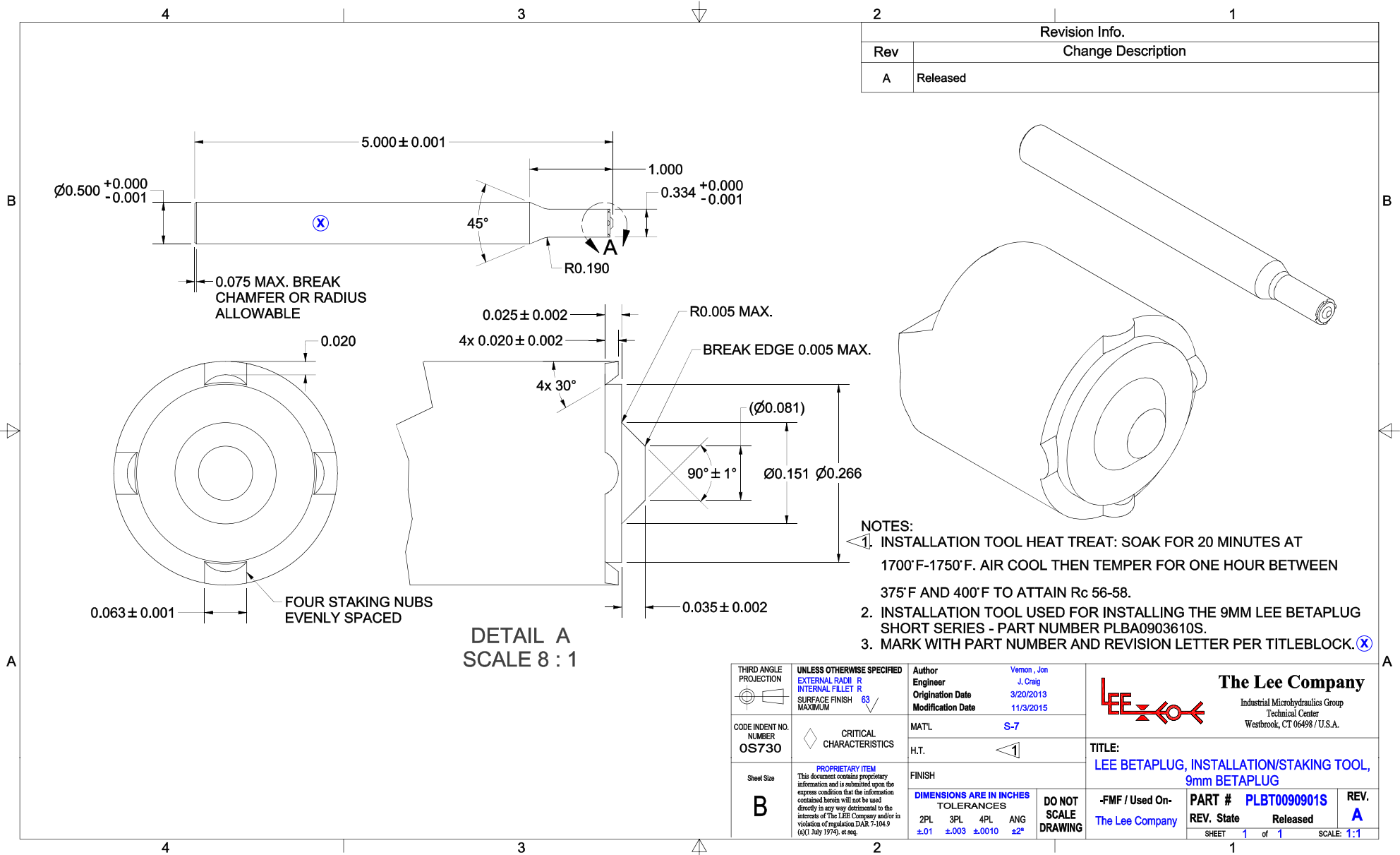



Revision Info.	
Rev	Change Description
A	Released



THIRD ANGLE PROJECTION	UNLESS OTHERWISE SPECIFIED EXTERNAL RADIUS R INTERNAL FILLET R SURFACE FINISH MAXIMUM 63	Author Vernon, Jon Engineer J. Craig Origination Date 3/20/2013 Modification Date 11/3/2015	 The Lee Company Industrial Microhydraulics Group Technical Center Westbrook, CT 06498 / U.S.A.	
CODE IDENT NO. NUMBER OS730	CRITICAL CHARACTERISTICS	MATL S-7	TITLE: LEE BETAPLUG, INSTALLATION/STAKING TOOL, 9mm BETAPLUG	
Sheet Size B	PROPRIETARY ITEM This document contains proprietary information and is submitted upon the express condition that the information contained herein will not be used directly in any way detrimental to the interests of The Lee Company and/or in violation of regulation DAR 7-104.9 (d)(1 July 1974), et seq.	H.T. <1	FINISH DIMENSIONS ARE IN INCHES TOLERANCES 2PL 3PL 4PL ANG ±.01 ±.003 ±.0010 ±2*	DO NOT SCALE DRAWING
			-FMF / Used On- The Lee Company	PART # PLBT090901S REV. State Released SHEET 1 of 1 SCALE: 1:1