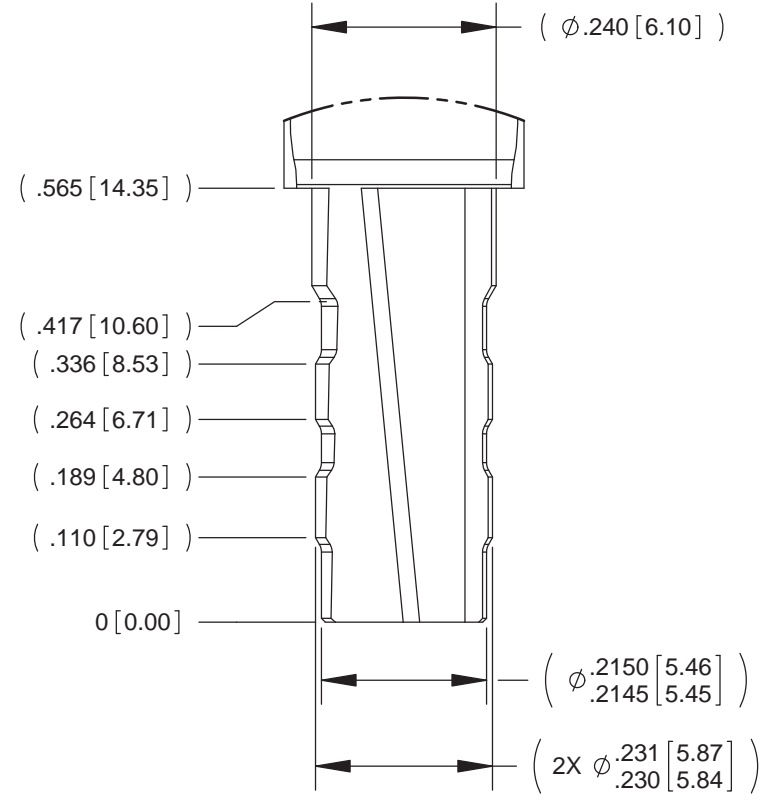
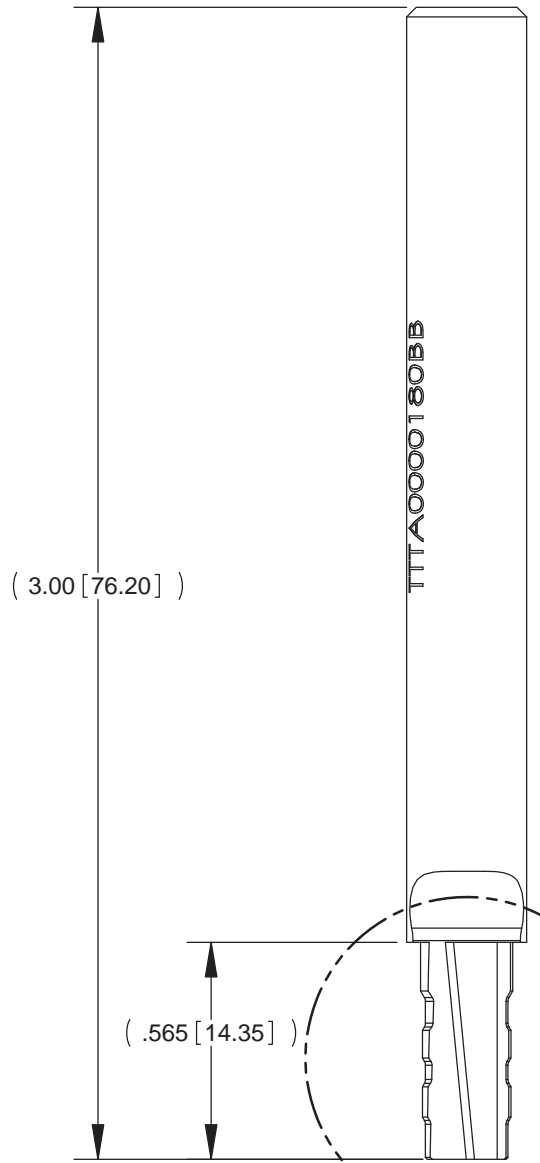


DWG. NO. **TTTA0000180B** REV **B2**

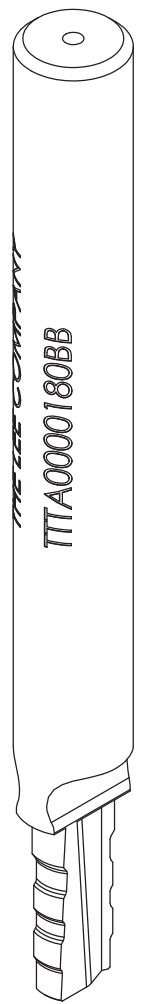
PROPRIETARY ITEM
 This document contains proprietary information and is submitted upon the express condition that the information contained herein will not be used directly or indirectly in any way detrimental to the interests of the LeeCompany, and/or in violation of regulation DAR 7-104.9 (a) (1 July 1974). et seq.

| REV | DATE | E.C. NO. / DESCRIPTION |
|-----|----------|--|
| B2 | 06/13/12 | CHANGED TITLE. PG1: MOVED DATUM 0 TO BTM OF TOOL, CHANGED NOTE 1. PG 2: DELETED NOTE 4, RENUMBERED NOTE 5 TO 4 |

MARKING



DETAIL A
SCALE 4 : 1



COPY

2. TOOL IS INTENDED TO BE USED WITH CNC EQUIPMENT TO GENERATE BOSS PER PAGE 2 OF 2.
 1. TOOL IS USED TO CREATE THE LEE CO. HDI, PLUG IN, 3 PORT, 3 WAY, TYPE 2 VALVE BOSS PER DRAWING LCFX0300100B REV B.
 NOTES:

NOTES AND DIMENSIONS SHOWN HEREON ARE FOR INSPECTION IDENTIFICATION ONLY. ALL MANUFACTURING RIGHTS ARE RESERVED.

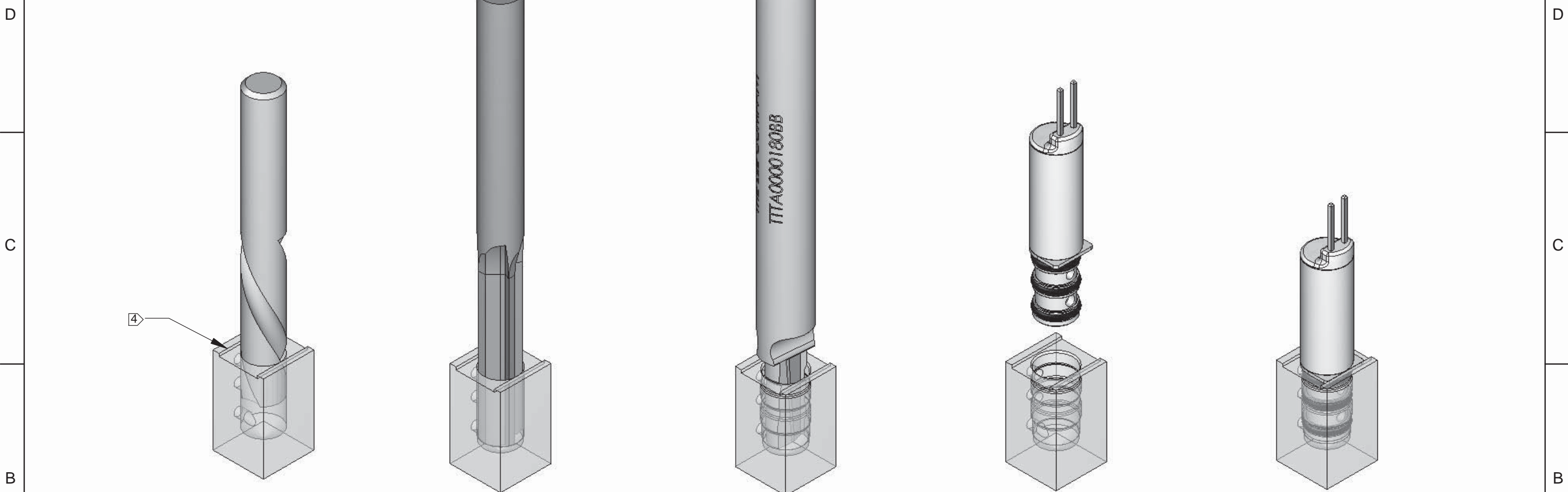
| | | | | |
|--|--|------------------------|--|---------------------------------|
| DO NOT SCALE DRAWING UNLESS OTHERWISE SPECIFIED DIMENSIONS ARE IN INCHES | | DRAWN TLC 06/13/12 | TITLE FORM TOOL, HDI-PI-3PORT-3W-TYPE 2 | |
| TOLERANCES .XX ±.010 .XXX ±.003 .XXXX ±.0005 ANGLES ±.5° | | CHK'D PBE 08/28/12 | The Lee Company 55 Bokum Rd. Essex, Ct 06426 | |
| INT CORNER R .006 MAX EXT CORNER R .006 MAX SURFACE FINISH 63 | | APP'D DJS 08/28/12 | | |
| MATERIAL CARBIDE | | THIRD ANGLE PROJECTION | | SIZE B |
| | | | | DWG. NO. TTTA0000180B |
| | | SCALE: 2:1 | | REV B2 |
| | | CODE ID ONZR4 | | SHEET 1 OF 2 |

6 5 4 3 2 1

DWG. NO. **TTTA0000180B** REV **B2**

PROPRIETARY ITEM
 This document contains proprietary information and is submitted upon the express condition that the information contained herein will not be used directly or indirectly in any way detrimental to the interests of the Lee Company, and/or in violation of regulation DAR 7-104.9 (a) (1 July 1974), et seq.

| REV | DATE | E.C. NO. / DESCRIPTION |
|-----|----------|--|
| B2 | 06/13/12 | CHANGED TITLE. PG1: MOVED DATUM 0 TO BTM OF TOOL, CHANGED NOTE 1. PG 2: DELETED NOTE 4, RENUMBERED NOTE 5 TO 4 |



4 ϕ .242 PILOT DRILL
 ∇ .470 RECOMMENDED
 DRILL INTERSECTING PASSAGES

ϕ .249 REAM
 ∇ .430 RECOMMENDED

BOSS TOOL CIRCLE MILL
 ∇ .430
 (OFFSET ϕ .0355) **3**

COMPLETED BOSS

VALVE INSTALLED

4 SHOWN WITH OPTIONAL VALVE ORIENTATION SLOT. SEE LEE CO. DRAWING LCFX0300100B REV B FOR DEFINITION.
3 CUTTING TOOL CIRCLE MILL OFFSET IS ϕ .0355 TO CREATE .250-.251 FINISHED O-RING SEALING DIAMETER.
 NOTES: (CONT'D)

NOTES AND DIMENSIONS SHOWN
 HEREON ARE FOR INSPECTION
 IDENTIFICATION ONLY.
 ALL MANUFACTURING RIGHTS
 ARE RESERVED.

| | | | | | |
|--|--|--|--------------------------|--|--|
| DO NOT SCALE DRAWING UNLESS OTHERWISE SPECIFIED DIMENSIONS ARE IN INCHES | | | DRAWN TLC 06/13/12 | | TITLE FORM TOOL, HDI-PI-3PORT-3W-TYPE 2 |
| TOLERANCES .XX ±.010 .XXX ±.003 .XXXX ±.0005 ANGLES ±.5° | | | CHK'D PBE 08/28/12 | | |
| INT CORNER R .006 MAX EXT CORNER R .006 MAX SURFACE FINISH 63 | | | APP'D DJS 08/28/12 | | |
| MATERIAL CARBIDE | | | THIRD ANGLE PROJECTION | | The Lee Company 55 Bokum Rd. Essex, Ct 06426 |
| SIZE B | | | DWG. NO. TTTA0000180B | | |
| SCALE: 2:1 | | | CODE ID ONZR4 | | SHEET 2 OF 2 |

COPY

6 5 4 3 2 1