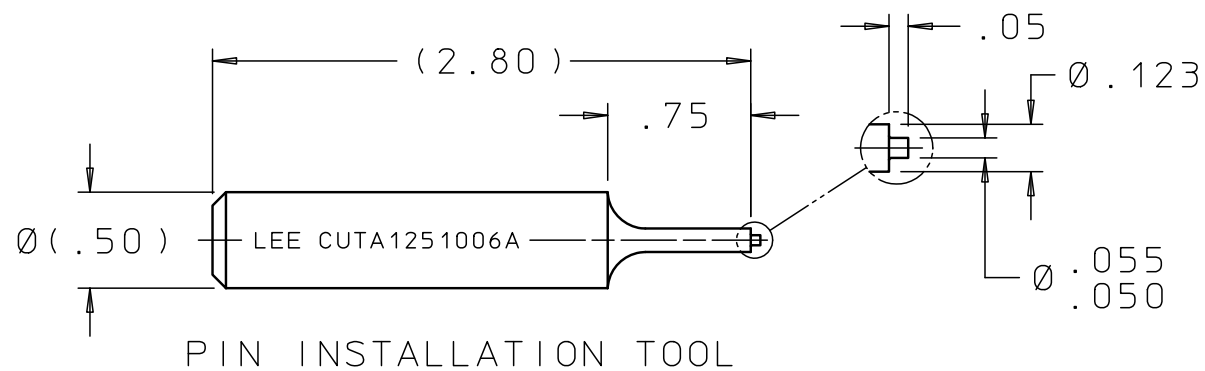
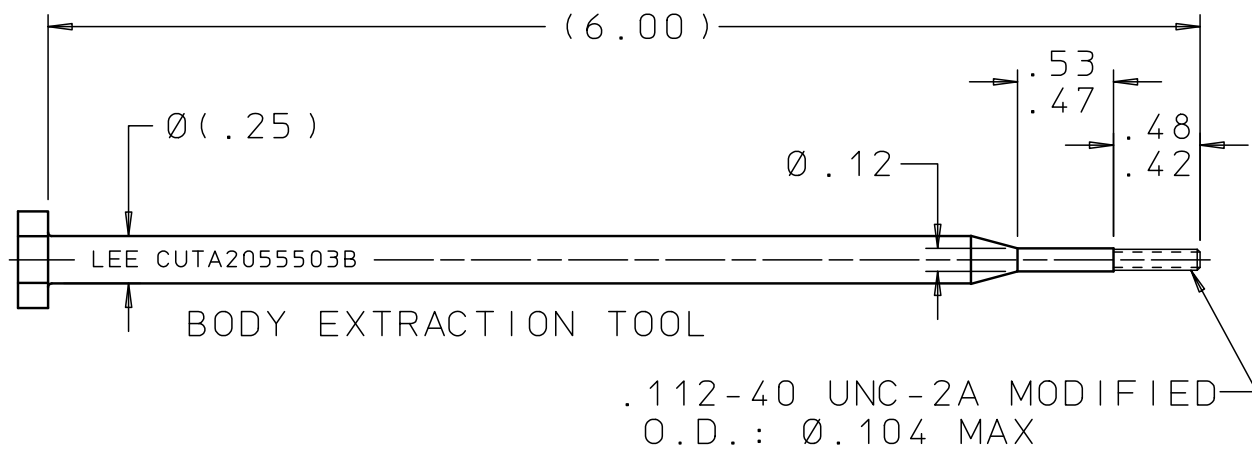
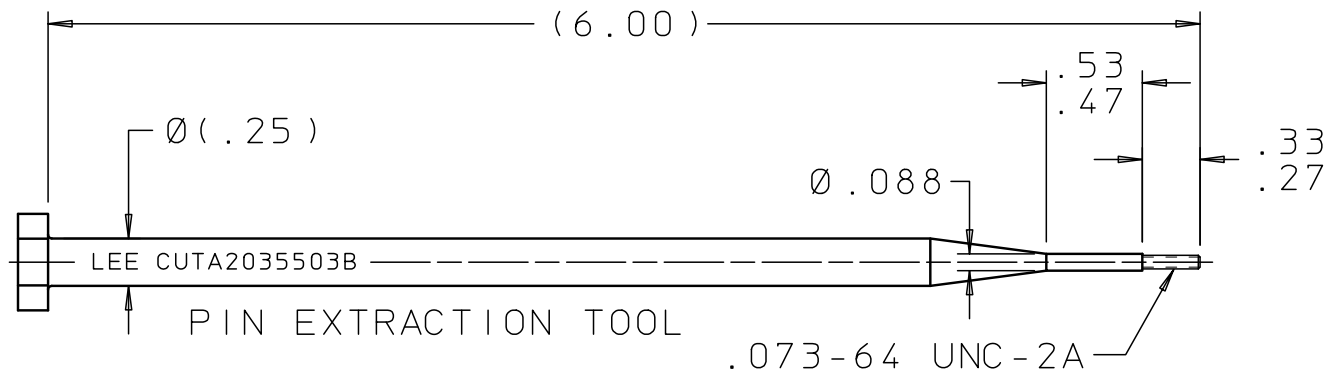
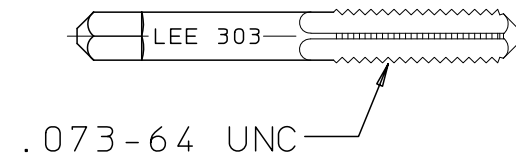


CUTA1250306C

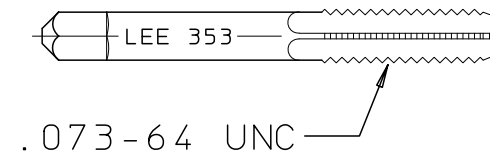
| REV | DATE | BY | DESCRIPTION |
|-----|----------|----|---|
| B | 11-13-12 | KD | PIN EXT TOOL; REMOVED HEX, ADDED 2 FLATS. BODY EXT TOOL; REMOVED HEX, ADDED 2 FLATS & MODIFIED O.D.: Ø.104 MAX. |



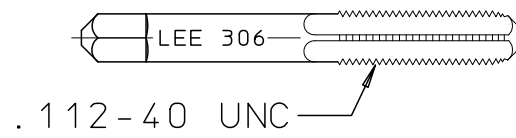
TAP DRILL
(CUTA1251206B)



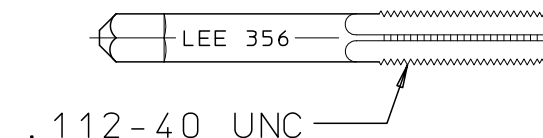
STARTER TAP
PIN EXTRACTION
(CUTA3035503B)



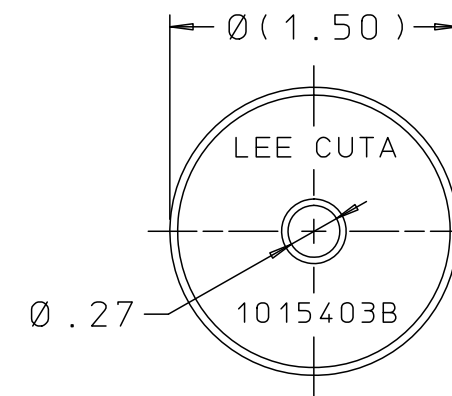
BOTTOMING TAP
PIN EXTRACTION
(CUTA3535503B)



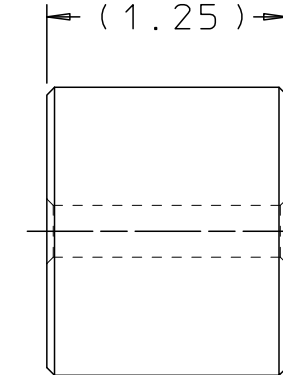
STARTER TAP
BODY EXTRACTION
(CUTA3064403B)



BOTTOMING TAP
BODY EXTRACTION
(CUTA3564403B)



STRIKER



PROPRIETARY ITEM

This document contains proprietary information and is submitted upon the express condition that the information contained herein will not be used directly or indirectly in any way detrimental to the interests of The Lee Company, and/or in violation of regulation DAR 7-104.9(a)(1 July 1974), et seq.

CUTD0406410
REFERENCE

| | | | | | |
|-------------------------|---|--------------------------|---|------------------|-----------------------|
| DWG NO: CUTA1250306C | NOTES AND DIMENSIONS SHOWN HERE ON ARE FOR INSPECTION IDENTIFICATION ONLY. ALL MANUFACTURING RIGHTS RESERVED. | DRAWN BY: GMR 08-09-90 | LEE TOOL SET, INST/EXTR .125 HIGH PRESSURE CHEK | | |
| | EXTERNAL CORNER RAD: INTERNAL FILLET RAD: | CHK'D BY: P C 08-20-90 | THE LEE COMPANY WESTBROOK, CT 06498 | | |
| | SURFACE FINISH ✓ ALL OVER DIMENSIONS ARE IN INCHES | APP'D BY: JCD 08-22-90 | SIZE: B | CAGE CODE: 92555 | DWG NO.: CUTA1250306C |
| | TOLERANCES 2 PLACES ±.015 3 PLACES ±.005 ANGLES ±5° | MAT: H.T.: FINISH: | DWG SCALE: NONE | | REV: B |
| | | SHEET 1 OF 1 | | | |