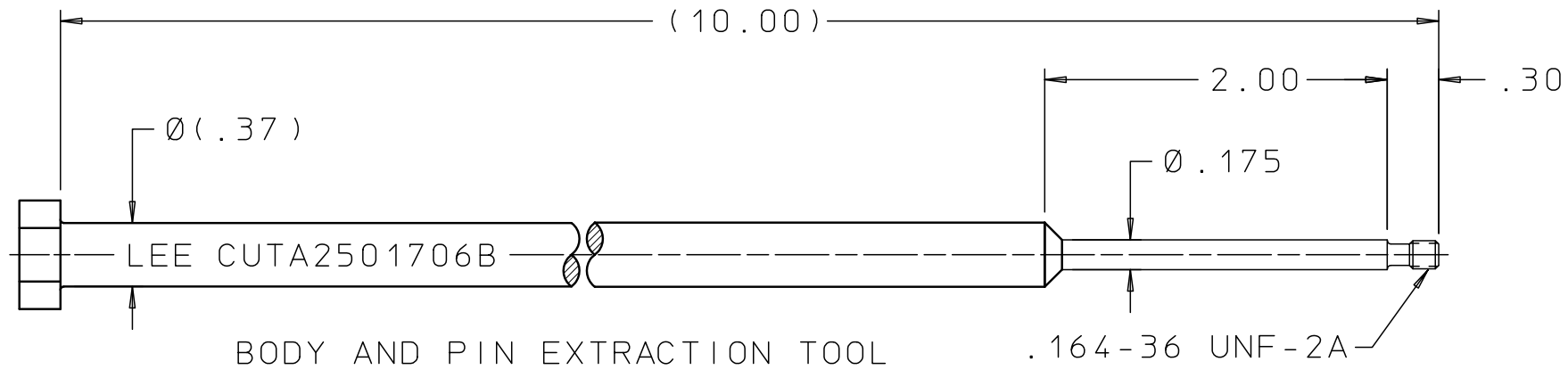
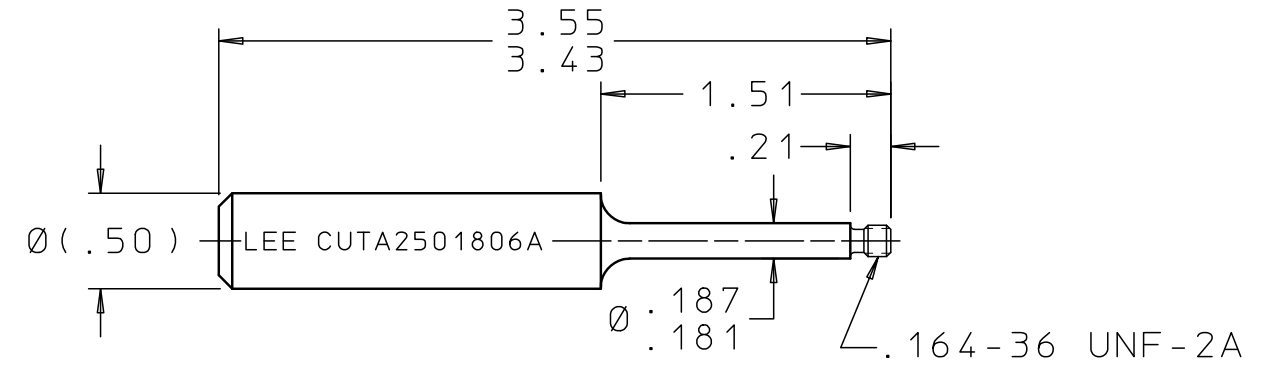


CUTX0503050B

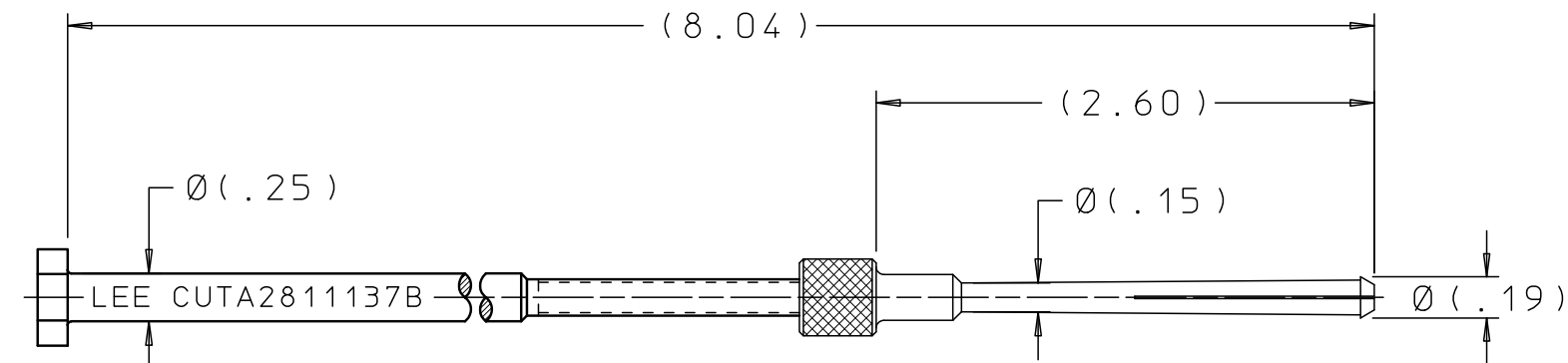
REV	DATE	BY	DESCRIPTION
B	02-25-13	KD	UPDATED BODY/PIN AND NOSE SEAL EXTRACTION TOOL, REMOVED HEX, ADDED TWO FLATS. NOSE SEAL, ADDED (2.60), Ø(.15) WAS Ø(.150), Ø(.19) WAS Ø(.183). DELETED (3.00) & (2.20).
2	09-12-13	KD	ADDED FMF. REMOVED (CPRX0500100B) FROM SUB-TITLE.



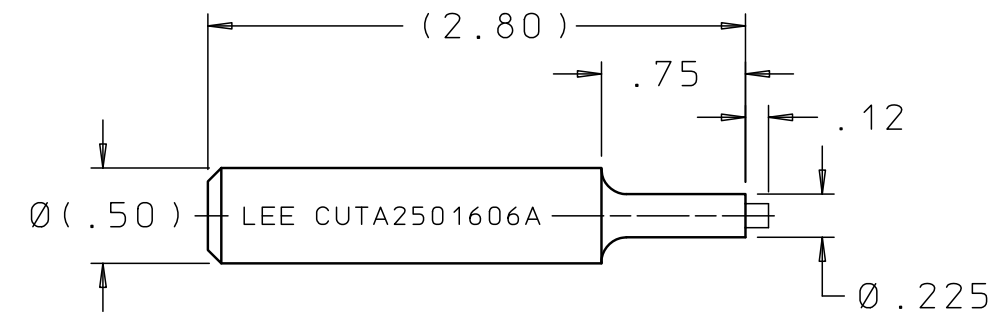
BODY AND PIN EXTRACTION TOOL



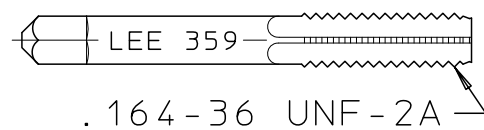
BODY INSTALLATION TOOL



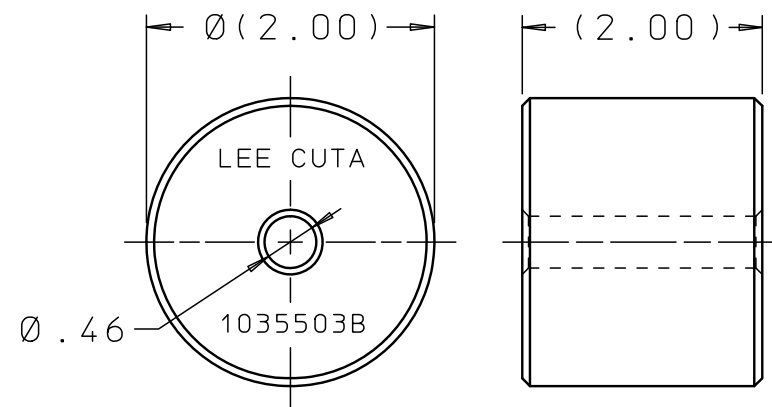
NOSE SEAL EXTRACTION TOOL



PIN INSTALLATION TOOL



BOTTOMING TAP (PIN EXTRACTION)
CUTA3595503B



STRIKER

TOOL SET FOR INSTALLATION AND EXTRACTION FOR:
LEE .250 HIGH PRESSURE PILOT OPERATED CHEK
SPECIAL

<p>PROPRIETARY ITEM</p> <p>This document contains proprietary information and is submitted upon the express condition that the information contained herein will not be used directly or indirectly in any way detrimental to the interests of The Lee Company, and/or in violation of regulation DAR 7-104.9(a)(1 July 1974), et seq.</p>	<p><u>CUSTOMER APPROVAL</u></p> <p>NAME _____ (PLEASE PRINT)</p> <p>TITLE _____</p> <p>SIGNATURE _____</p> <p>DATE _____</p>		<p>FMF</p> <p>THE LEE COMPANY WESTBROOK, CT</p>	<p>DWG NO: CUTX0503050B</p> <p>NOTES AND DIMENSIONS SHOWN HERE ON ARE FOR INSPECTION IDENTIFICATION ONLY. ALL MANUFACTURING RIGHTS RESERVED.</p> <p>EXTERNAL CORNER RAD: INTERNAL FILLET RAD:</p> <p>SURFACE FINISH ✓ ALL OVER DIMENSIONS ARE IN INCHES</p> <p>TOLERANCES 2 PLACES ±.015 3 PLACES ±.005 ANGLES ±5°</p>	<p>DRAWN BY: GMR 07-16-91</p> <p>CHK'D BY: P C 07-19-91</p> <p>APP'D BY: JCD 08-01-91</p>	<p>LEE TOOL SET INSTALLATION/EXTRACTION, SPECIAL</p>				
			<p>CUTD0503050</p> <p>REFERENCE</p>		<p>MAT:</p> <p>H.T.:</p> <p>FINISH:</p>	<p>THE LEE COMPANY WESTBROOK, CT 06498</p>		<p>SIZE: B</p> <p>CAGE CODE: 92555</p>	<p>DWG NO.: CUTX0503050B</p>	<p>REV: B</p>
							<p>DWG SCALE: NONE SHEET 1 OF 1</p>			