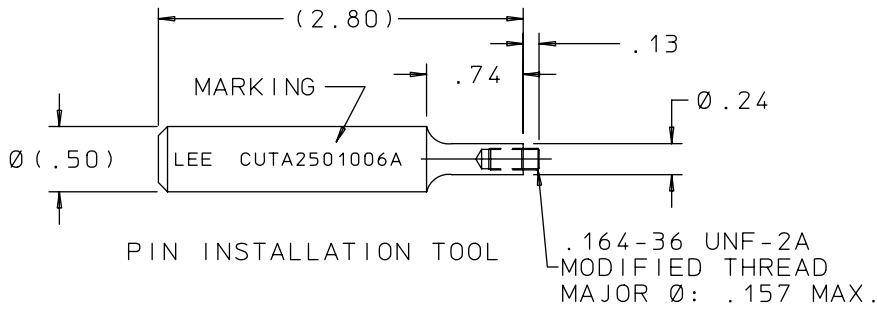
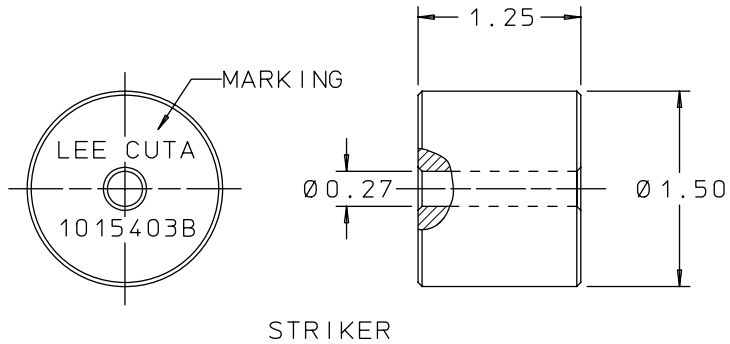
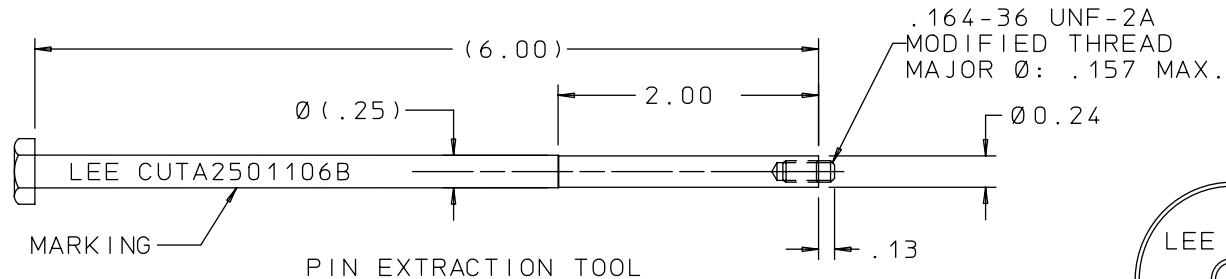
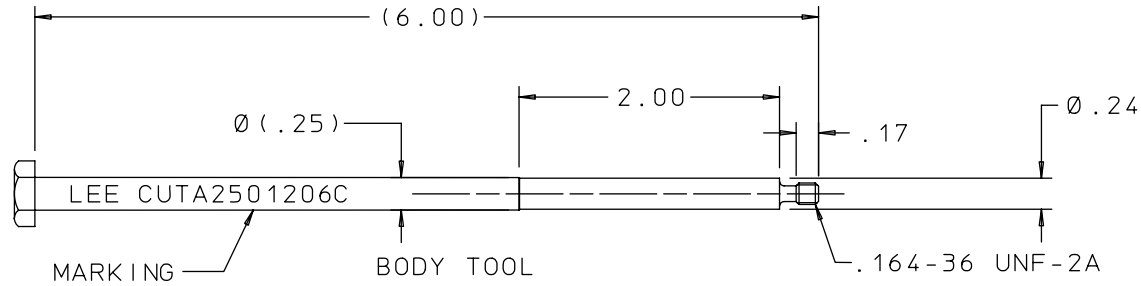


CUTA2500306C

REV	DATE	BY	DESCRIPTION
A	06-08-87	TD	INITIAL RELEASE
B	08-18-89	EJ	BODY TOOL MARKING WAS CUTX0100890B PIN EXTR. TOOL MARKING WAS CUTX-0100900B. PIN INSTAL. TOOL MARKING WAS CUTX-01000920B. ADD MOD. MAJOR Ø .157 MAX. TO PIN INSTAL & EXTR. TOOL. .74 WAS .740-.750.
2	10-10-89	GR	STRIKER MARKING WAS 1045403BA.
3	08-06-04	KD	REMOVED REV LETTER FROM MARKING.



INSTALLATION AND EXTRACTION SET FOR:
.250-.260 LEE LOLOHM CHEK

PROPRIETARY ITEM

This document contains proprietary information and is submitted upon the express condition that the information contained herein will not be used directly or indirectly in any way detrimental to the interests of The Lee Company, and/or in violation of regulation DAR 7-104.9(a)(1 July 1974), et seq.

CUTD0100880A
REFERENCE

DWG NO: CUTA2500306C	NOTES AND DIMENSIONS SHOWN HERE ON ARE FOR INSPECTION IDENTIFICATION ONLY. ALL MANUFACTURING RIGHTS RESERVED.	DRAWN BY: THD	06-08-87	LEE TOOL SET INSTALLATION AND EXTRACTION		
	EXTERNAL CORNER RAD: INTERNAL FILLET RAD:	CHK'D BY: J B	06-16-87	THE LEE COMPANY WESTBROOK, CT 06498		
	SURFACE FINISH ✓ ALL OVER DIMENSIONS ARE IN INCHES	APP'D BY: SEA	08-03-87	SIZE B	CAGE CODE 92555	DWG NO. CUTA2500306C
	TOLERANCES 2 PLACES ±.015 3 PLACES ±.005 ANGLES ±5°	MAT:	H.T.:	DWG SCALE: NONE	REV B	SHEET 1 OF 1