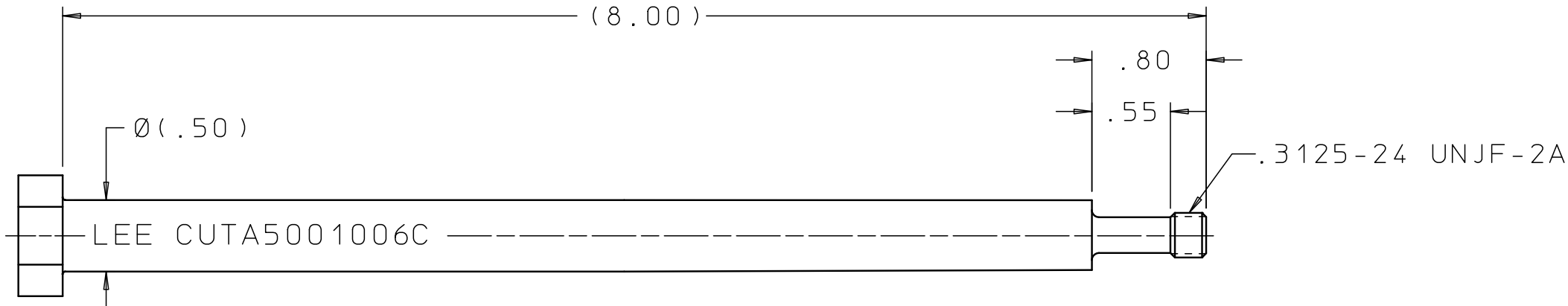
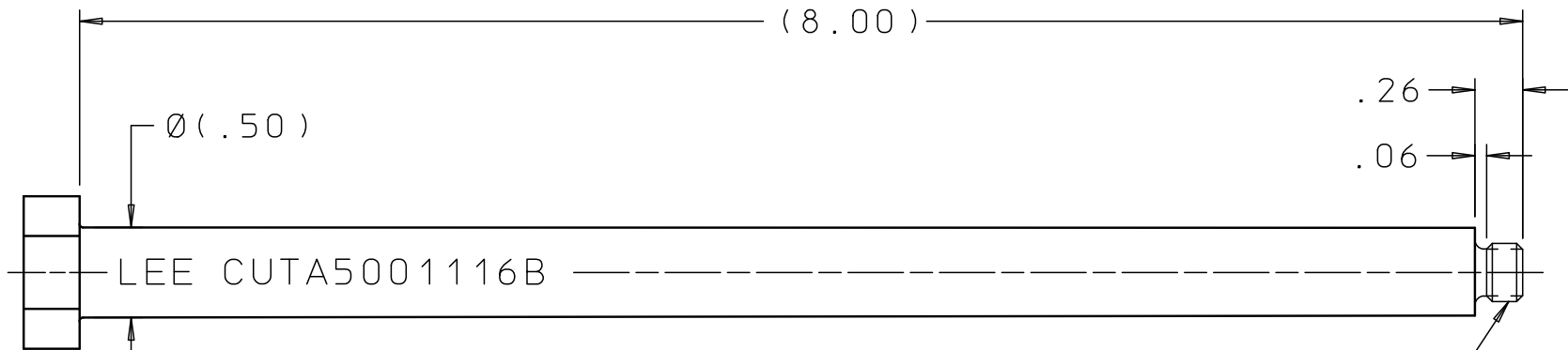


CUTA5000106C

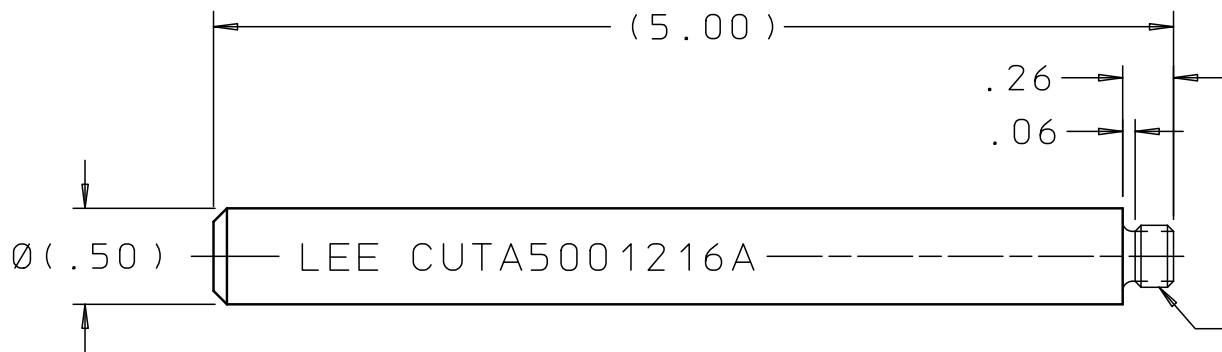


BODY INSTALLATION & EXTRACTION TOOL



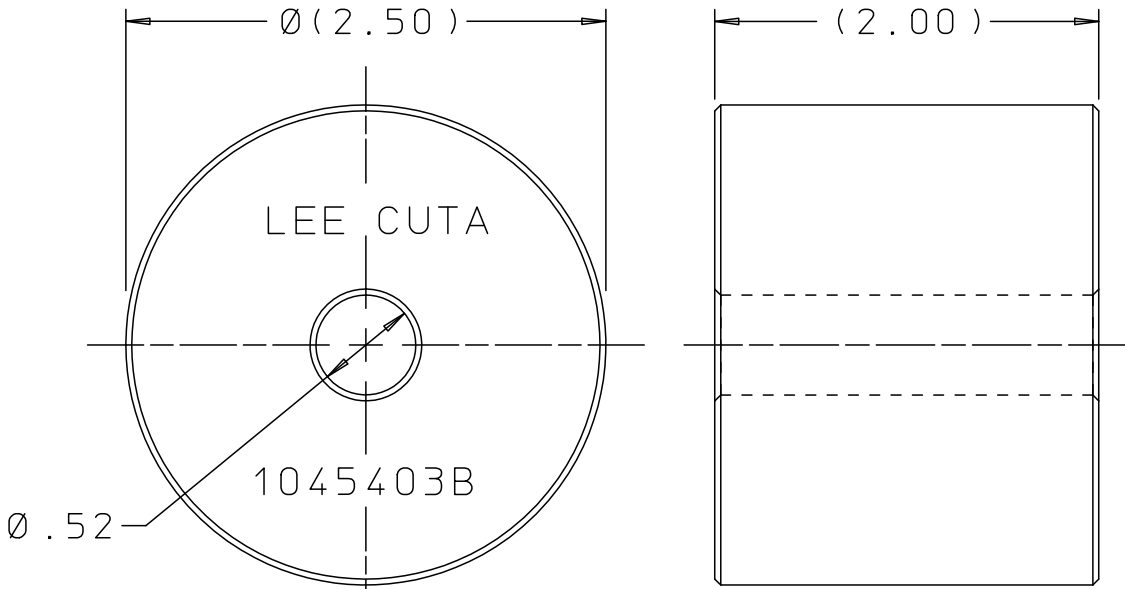
PIN EXTRACTION TOOL

.375-24 UNF-2A MODIFIED  
MAJOR Ø: .353 MAX  
MINOR Ø: .324 MAX



PIN INSTALLATION TOOL

.375-24 UNF-2A MODIFIED  
MAJOR Ø: .353 MAX  
MINOR Ø: .324 MAX



STRIKER


INSTALLATION & EXTRACTION TOOL SET FOR:

.500 LEE FLOW CONTROL  
.500 LO LOHM CHEK  
.500 PRI FORWARD

REV	DATE	BY	DESCRIPTION
C3	08-06-10	KD	BODY INST/EXTR TOOL : UPDATED HEX. Ø(.50) WAS Ø(.49). PIN EXTR TOOL : UPDATED HEX. Ø(.50) WAS Ø(.49). PIN INST TOOL : (5.00) WAS 5.00 & Ø(.50) WAS Ø(.49). STRIKER : Ø(2.50) WAS Ø2.50 & (2.00) WAS 2.00. DELETED FINISH: PASSIVATE/ASTM A967
D	03-14-12	KD	BODY INST/EXTR TOOL & PIN EXTR TOOL : REMOVED HEX. ADDED 2 FLATS.
2	11-23-21	KD	PIN INSTALLATION & PIN EXTRACTION TOOLS ADDED MINOR Ø: .324 MAX. MAJOR Ø: .353 MAX WAS Ø.357 MAX.

**PROPRIETARY ITEM**  
This document contains confidential, trade secret information which is proprietary to The Lee Company, and is submitted upon the express condition that neither it, nor our products, will be used directly or indirectly in any way detrimental to the interests of The Lee Company, such as disclosure to others or replication of our products, and/or in violation of 18 U.S.C. 1905 (TSA), 5 U.S.C. 552 (FOIA), E.O.12600 of 6/23/87, 18 U.S.C. 1832, and C.G.S.A. (CT) Chapter 625 sec. 35-50 thru 35-58.

CUTD0101930
REFERENCE

DWG NO: CUTA5000106C	NOTES AND DIMENSIONS SHOWN HERE ON ARE FOR INSPECTION IDENTIFICATION ONLY. ALL MANUFACTURING RIGHTS RESERVED.	DRAWN BY: E D	06-02-87	LEE TOOL SET INSTALLATION AND EXTRACTION		
	EXTERNAL CORNER RAD: INTERNAL FILLET RAD:	CHK'D BY: J B	06-16-87	 THE LEE COMPANY WESTBROOK, CT 06498		
	SURFACE FINISH ✓ ALL OVER DIMENSIONS ARE IN INCHES	APP'D BY: SEA	06-17-87			
	TOLERANCES 2 PLACES 3 PLACES ANGLES ±.015 ±.005 ±5°	MAT:		SIZE B	CAGE CODE 92555	DWG NO. CUTA5000106C
		H.T.:				REV D
				FINISH:		
				DWG SCALE: NONE		
				SHEET 1 OF 1		