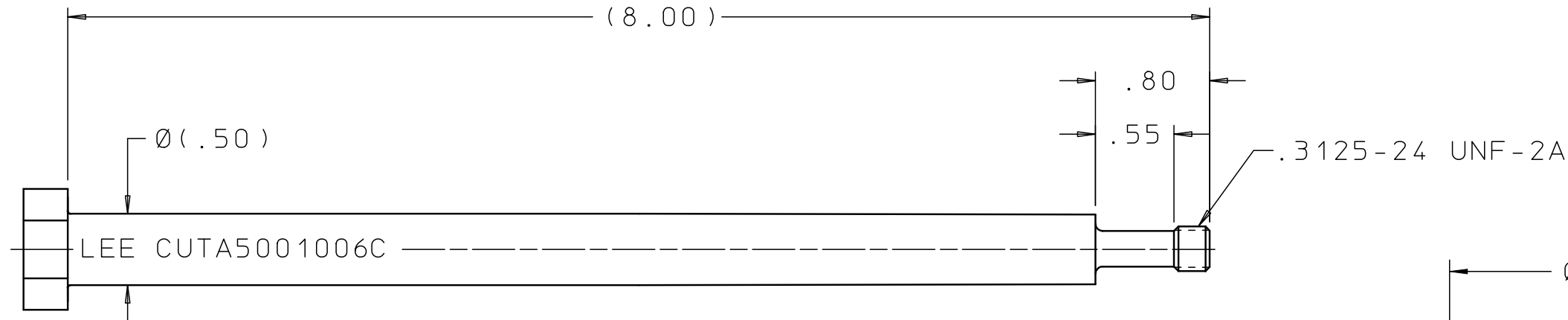
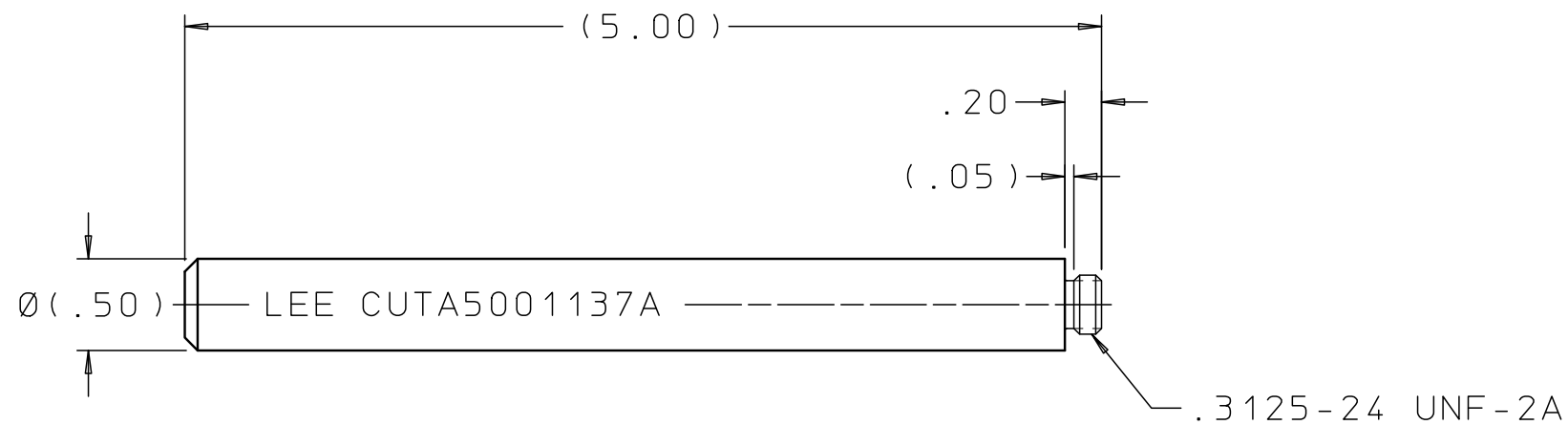


CUTA5000206C

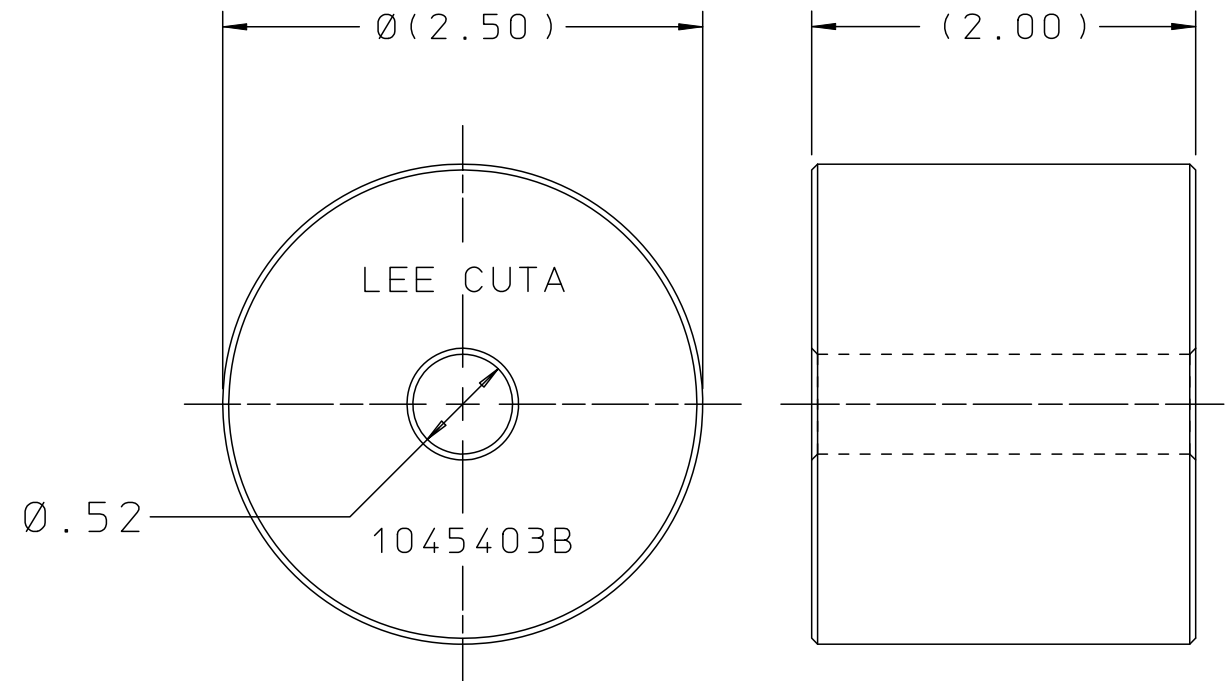
REV	DATE	BY	DESCRIPTION
A	10-01-90	GMR	INITIAL RELEASE
2	02-21-02	HM	REMOVED REV LTR FROM MARKINGS. CORRECTED LENGTH OF PIN EXTR/BODY TOOL.
3	08-06-10	KD	PIN EXTR/BODY TOOL: UPDATED HEX. Ø(.50) WAS Ø(.49). PIN INST TOOL: Ø(.50) WAS Ø.49 & (5.00) WAS 5.00.
B	10-22-12	KD	PIN EXTRACTION & BODY TOOL; REMOVED HEX, ADDED 2 FLATS. PIN INSTALLATION TOOL; ADDED (.05).



PIN EXTRACTION AND BODY TOOL



PIN INSTALLATION TOOL



STRIKER

INSTALLATION AND EXTRACTION TOOL SET FOR:
LEE .500 HIGH PRESSURE CHEK

PROPRIETARY ITEM

This document contains proprietary information and is submitted upon the express condition that the information contained herein will not be used directly or indirectly in any way detrimental to the interests of The Lee Company, and/or in violation of regulation DAR 7-104.9(a)(1 July 1974). et seq.

CUTD0101640
REFERENCE

DWG NO: CUTA5000206C	NOTES AND DIMENSIONS SHOWN HERE ON ARE FOR INSPECTION IDENTIFICATION ONLY. ALL MANUFACTURING RIGHTS RESERVED.		DRAWN BY: GMR	10-01-90	LEE TOOL SET INSTALLATION AND EXTRACTION		
	EXTERNAL CORNER RAD: INTERNAL FILLET RAD:		CHK'D BY: P C	10-08-90			
	SURFACE FINISH ✓ ALL OVER DIMENSIONS ARE IN INCHES		APP'D BY: JCD	10-08-90	THE LEE COMPANY WESTBROOK, CT 06498		
	TOLERANCES 2 PLACES ±.015 3 PLACES ±.005 ANGLES ±5°		MAT:	H.T.:			SIZE
		FINISH:		B	92555	CUTA5000206C	B
				DWG SCALE: NONE		SHEET 1 OF 1	