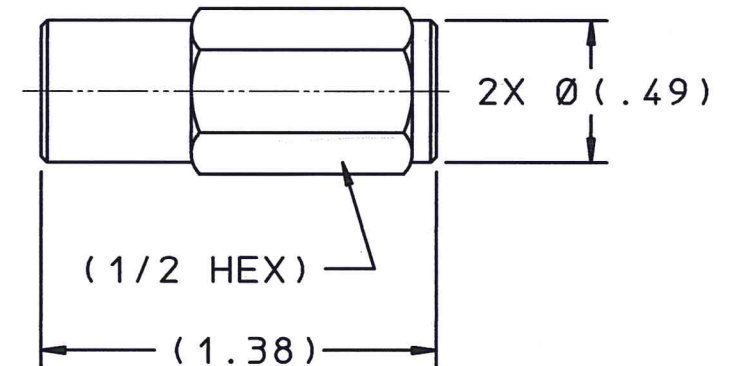
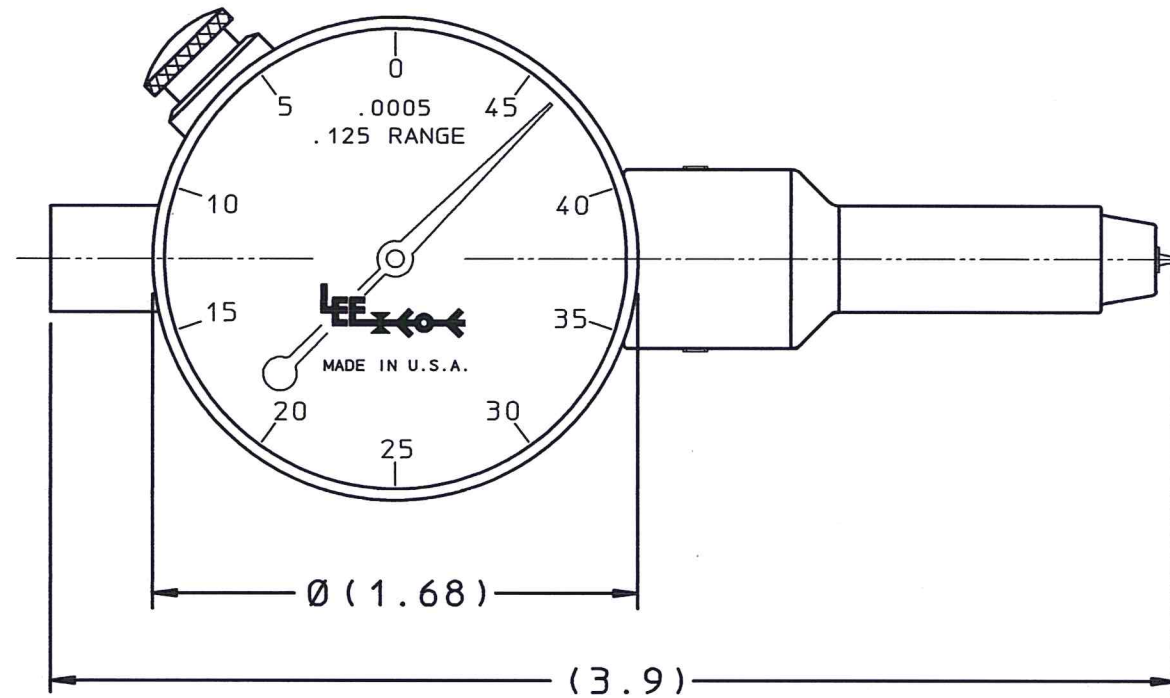
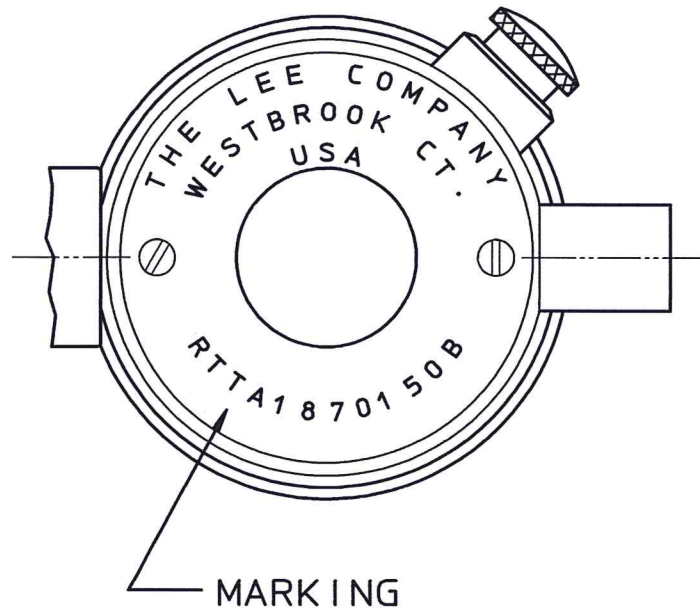


RTTA1870150B

REV	DATE	BY	DESCRIPTION
A	05-05-93	ARP	INITIAL RELEASE
B	01-13-94	ARP	REVISED PICTURE
C	10-05-05	ARP	REVISED MARKING LOCATION AND PICTURE



INSPECTION GAUGE

ZEROING BLOCK

NOTES:

1. ZERO THE DIAL GAUGE BY INSERTING THE NIPPLE END OF THE GAUGE INTO THE ZEROING BLOCK UNTIL BOTTOMING OCCURS. ROTATE THE DIAL FACE TO ZERO AND REMOVE THE ZEROING BLOCK.
2. TO MEASURE THE DEFLECTION ON THE KIPSTER FACE, INSERT THE LEE KIPSTER INTO THE RECESS IN THE GAUGE NIPPLE. THE DEFLECTION CAN NOW BE MEASURED DIRECTLY FROM THE GAUGE.
3. TO MEASURE THE PRESSURE SENSED BY THE LEE KIPSTER, READ THE PRESSURE DIRECTLY FROM THE APPROPRIATE PRESSURE VS. DEFLECTION GRAPH. THESE GRAPHS ARE SUPPLIED WITH EACH KIPSTER: CONTACT THE LEE COMPANY TECHNICAL CENTER - WESTBROOK, CT. IF THE APPROPRIATE GRAPH IS UNAVAILABLE.

PROPRIETARY ITEM

This document contains proprietary information and is submitted upon the express condition that the information contained herein will not be used directly or indirectly in any way detrimental to the interests of the Lee Company, and/or in violation of regulation DAR 7-104.9 (a) (1 July 1974). et seq.

RTTD0100080B
REFERENCE

DWG NO. RTTA1870150B	NOTES AND DIMENSIONS SHOWN HERE ON ARE FOR INSPECTION IDENTIFICATION ONLY. ALL MANUFACTURING RIGHTS RESERVED.			DRAWN	ARP	05-05-93	LEE KIPSTER DIAL GAUGE SET		
	UNLESS OTHERWISE SPECIFIED EXTERNAL COR. R INTERNAL FILLET R			CHK'D	<i>KH</i>	06-09-05	THE LEE COMPANY WESTBROOK, CT 06498		
	SURFACE FINISH ✓ ALL OVER DIMENSIONS ARE IN INCHES TOLERANCES 2 PLACES 3 PLACES ANGLES ±.015 ±.005 ± 5°			APP'D	<i>APM</i>	10-6-05	SIZE	CAGE CODE	DWG NO.
				MAT'L			B	92555	RTTA1870150B
			H.T.			SCALE	NONE	SHEET 1 of 1	
			FINISH						