

THINK BIG

DESIGN SMALL

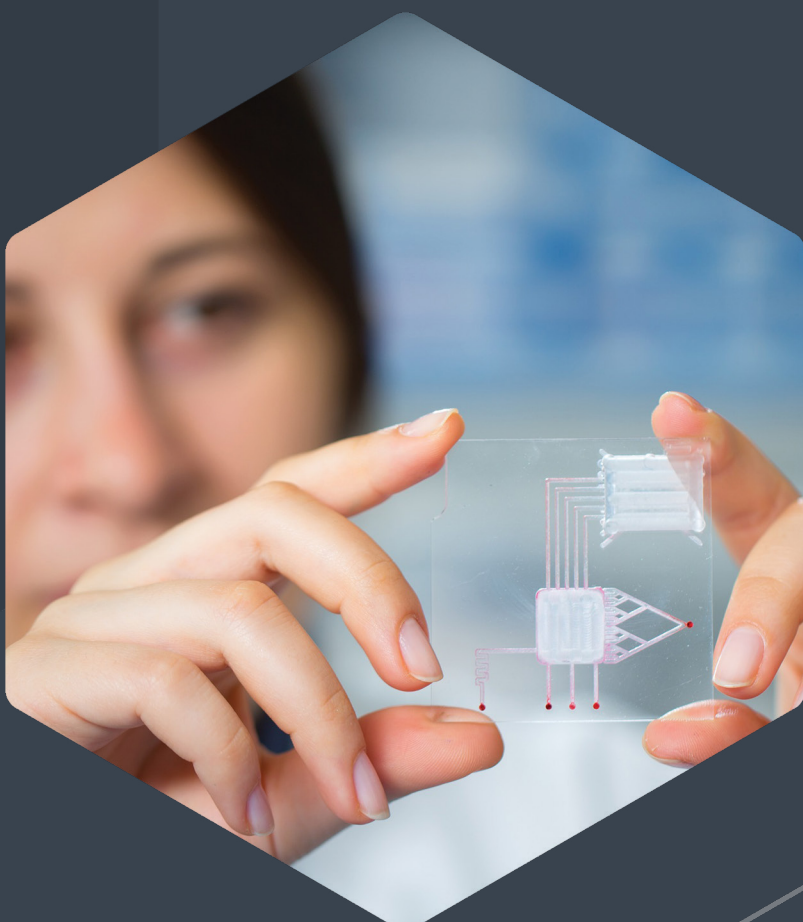
Control Solenoid Valves



▶ MORE ON CONTROL VALVES

Precision flow control for a wide range of applications.

Enhance performance while conserving power, space, and weight.



DIAGNOSTICS

Control small volumes of fluid with high precision when piloting samples through a microfluidic card.

AS LOW AS
37dBA

Achieve patient comfort with quiet operation.

RESPIRATORY THERAPY

Achieve high flow rates, low power and quiet operation whether you're blending gases or flowing to a sensor.



< 2.5 GRAMS

Reduce size and weight in portable instruments.



BREATH ANALYSIS

Detect levels of alcohol, cannabis or other chemical substances with high reliability.

15 SLPM @15 psid

Achieve high flow rates in a compact design.

COMPRESSION THERAPY

Quickly inflate and deflate cuff compartments while minimizing power and actuation noise.



5.5 mJ/SWITCH

Latching function consumes less power to reduce heat and prolong battery life.



ENVIRONMENTAL MONITORING

Detect gases, analyze air samples, and calibrate sensors with extreme flexibility.

25 µLPM max (air)

Minimize leakage with exceptional valve sealing performance.

PATIENT SIMULATORS

Increase the realism of medical training through precise control of simulated bodily functions.



28 µL

Reduce carryover for faster purging and throughput with low internal volume.



DIALYSIS

Use quiet operation to enhance patient comfort when piloting dialysate, without compromising reliability.

250 million+ cycles

Minimize maintenance costs with high reliability.

For more information visit theleeco.com/control

