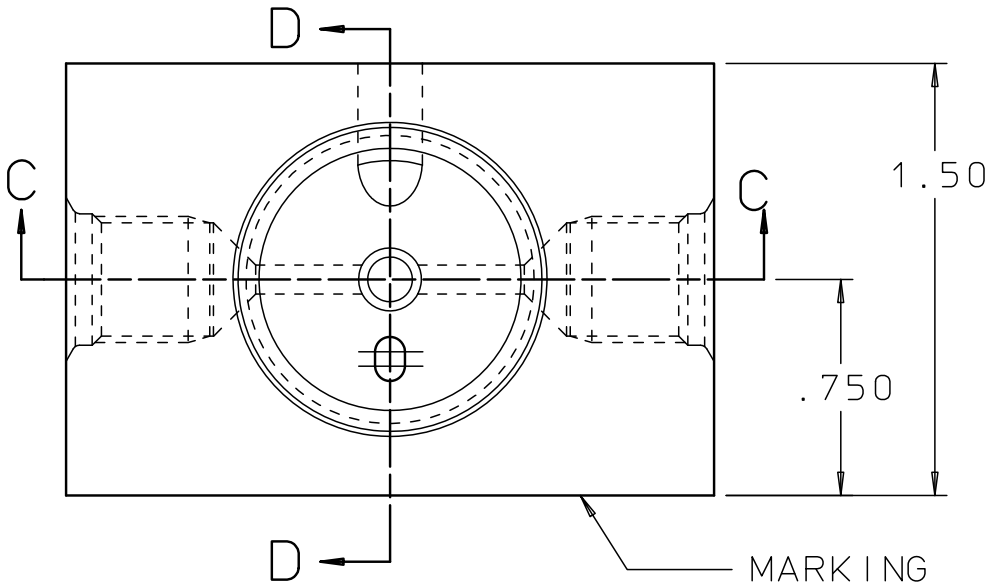


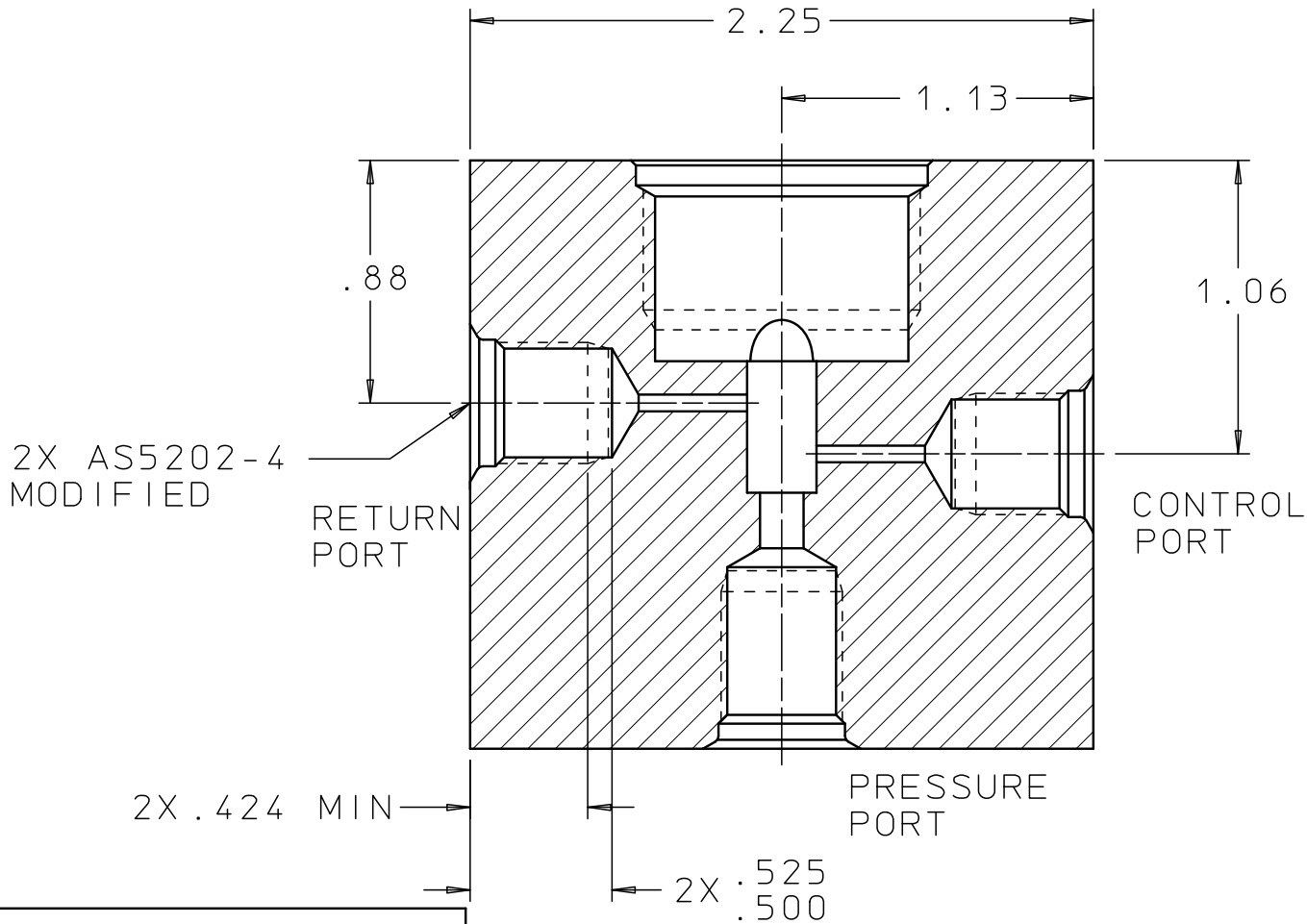
CUTA2500121A

REV	DATE	BY	DESCRIPTION
A	04-22-15	RF	INITIAL RELEASE

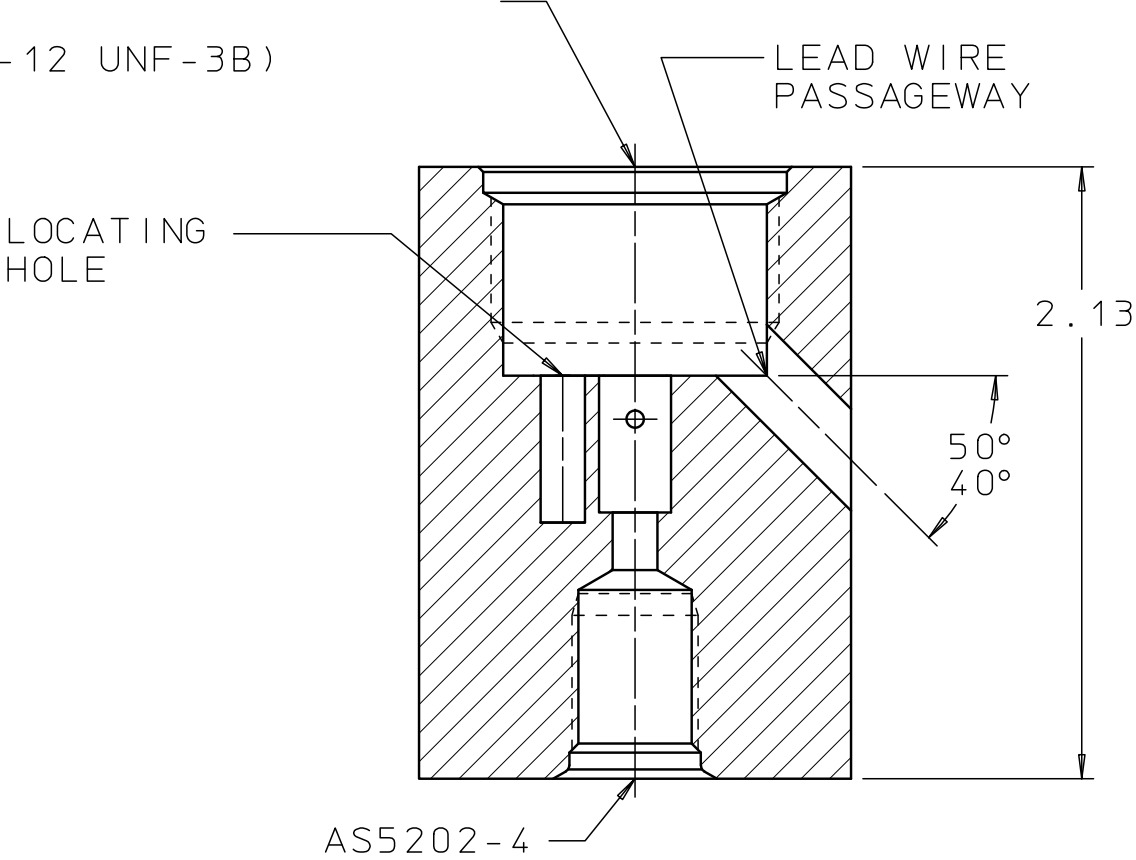


MARKING  
"LEE CUTA2500121A"

INSTALLATION HOLE FOR  
LEE DIRECT ACTING DUAL  
COIL 250 SERIES SOLENOID  
VALVE  
(1.00-12 UNF-3B)



SECTION C-C




SECTION D-D

PROPRIETARY ITEM

This document contains proprietary information and is submitted upon the express condition that the information contained herein will not be used directly or indirectly in any way detrimental to the interests of The Lee Company, and/or in violation of regulation DAR 7-104.9(a)(1 July 1974), et seq.

CUTD2500121

REFERENCE

DWG NO: CUTA2500121A	NOTES AND DIMENSIONS SHOWN HERE ON ARE FOR INSPECTION IDENTIFICATION ONLY. ALL MANUFACTURING RIGHTS RESERVED.			DRAWN BY:	R F	04-22-15	TEST FIXTURE FOR DUAL COIL 250 SERIES SOLENOID VALVE			
				CHK'D BY:	A S	12-03-15				
	EXTERNAL CORNER RAD: INTERNAL FILLET RAD:  SURFACE FINISH ✓ ALL OVER DIMENSIONS ARE IN INCHES  TOLERANCES 2 PLACES 3 PLACES ANGLES ±.015 ±.005 ±5°			APP'D BY:	B B	06-08-15	<div> THE LEE COMPANY WESTBROOK, CT 06498</div>			
				MAT: 2024-T351 ALUMINUM						
				H.T.:			SIZE	CAGE CODE	DWG NO.	REV
				FINISH: CLEAR ANODIZE		B	92555	CUTA2500121A	A	
					DWG SCALE: NONE		SHEET 1 OF 1			