

# THINK BIG

## DESIGN SMALL

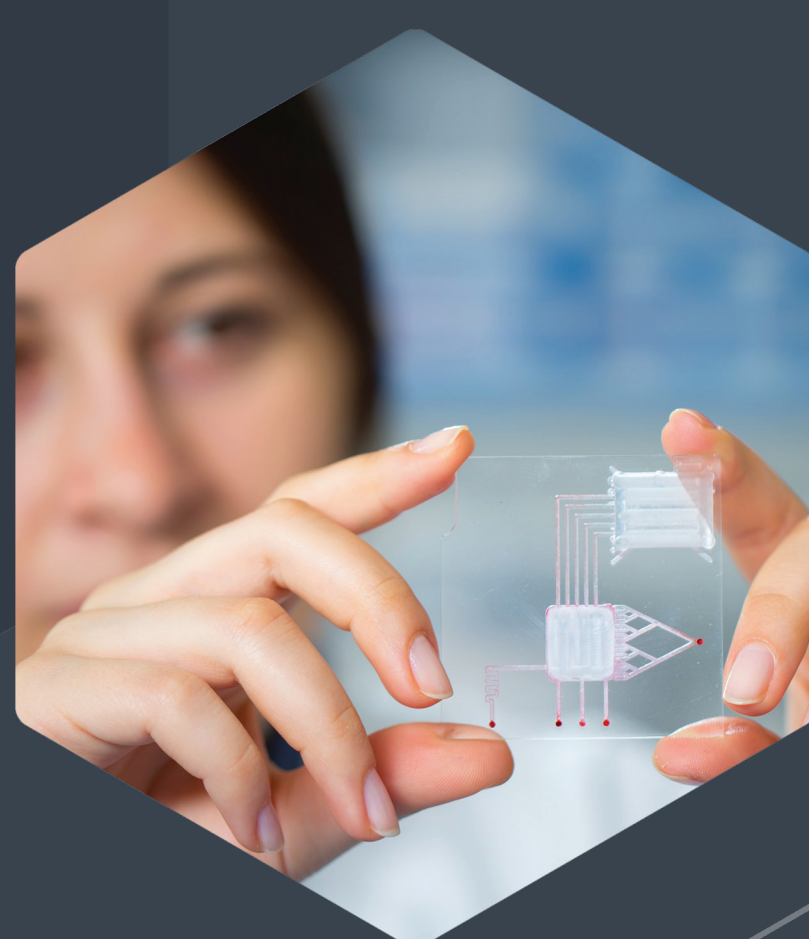
**Lee genvi® and HDI™  
Control Solenoid Valves**



► MORE ON CONTROL VALVES

**Precision flow control  
for a wide range  
of applications.**

**Enhance performance while  
conserving power, space  
and weight.**



### DIAGNOSTICS

Control small volumes of fluid  
with high precision when piloting  
samples through a microfluidic card.



### RESPIRATORY THERAPY

Achieve high flow rates, low power  
and quiet operation whether you're  
blending gases or flowing to a sensor.



**AS LOW AS  
37dBA**

Achieve patient comfort  
with quiet operation.

**< 2.5  
GRAMS**

Reduce size and weight  
in portable instruments.



### BREATH ANALYSIS

Detect levels of alcohol, cannabis  
or other chemical substances  
with high reliability.

**40 SLPM  
@15 psid**

Achieve high flow rates  
in a compact design.



### COMPRESSION THERAPY

Quickly inflate and deflate cuff  
compartments while minimizing  
power and actuation noise.



**5.5  
mJ/SWITCH**

Latching function  
consumes less power  
to reduce heat and  
prolong battery life.



### ENVIRONMENTAL MONITORING

Detect gases, analyze air samples  
and calibrate sensors with  
extreme flexibility.

**25 µLPM  
max (air)**

Minimize leakage with  
exceptional valve sealing  
performance.



### PATIENT SIMULATORS

Increase the realism of medical  
training through precise control  
of simulated bodily functions.



**28 µL**

Reduce carryover for  
faster purging and  
throughput with low  
internal volume.



### DIALYSIS

Use quiet operation to enhance  
patient comfort when piloting dialysate,  
without compromising reliability.

**250  
million+  
cycles**

Minimize maintenance  
costs with high reliability.

For more information visit [theleeco.com/control](http://theleeco.com/control)

**LEE**   
THE LEE COMPANY