



Gene Sequencing

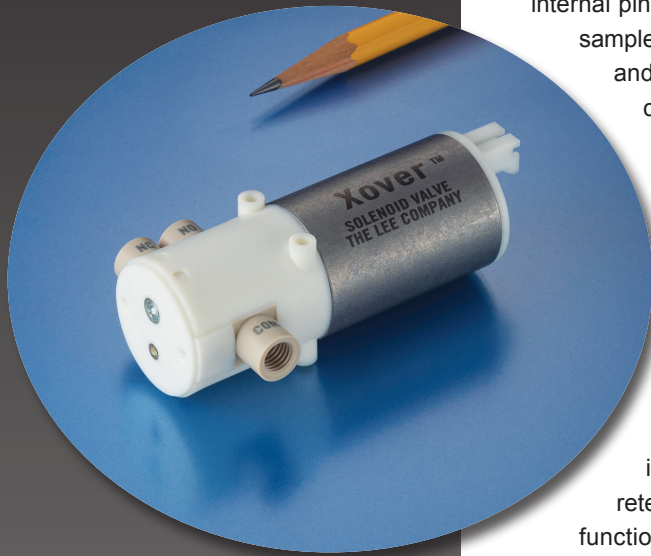


Flow Cytometry



In Vitro Diagnostics

SPOTLIGHT ON INNOVATION



FEATURES

- Low Internal Volume: 11 μL Total
- Carryover Volume: 3.7 μL
- Long, Maintenance Free Life
- Chemically Inert Wetted Materials
- Low Power Consumption, Continuous Duty

APPLICATIONS

- Flow Cytometry
- Gene Sequencing
- In Vitro Diagnostics
- Scientific Instruments
- Drug Discovery

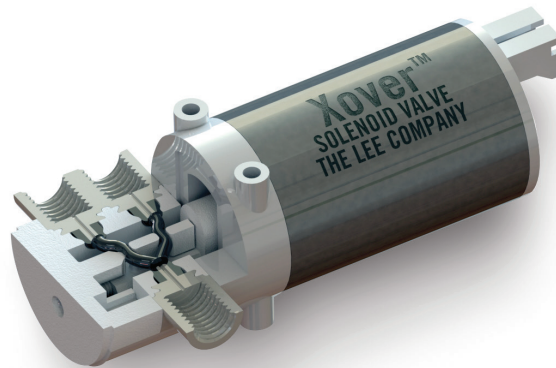
XOVER™ SOLENOID VALVE

INTERNAL PINCH TUBE ISOLATION VALVE

The Lee Company is proud to announce the Xover™ solenoid valve, a groundbreaking internal pinch-tube solenoid valve designed to switch quickly and efficiently between samples, reagents, cleaning solutions or calibrants. Featuring unmatched reliability and an exceptionally low carryover volume of just 3.7 μL , Xover is ideal for critical applications in flow cytometry, gene sequencing, in vitro diagnostics, urinalysis, and hematology instruments.

The Xover solenoid valve features a Y-shaped elastomer tube in a 3-way configuration. The innovative design combines the flow path of a pinch valve with the versatile, maintenance-free performance of a chemically inert isolation valve. The valve is easily flushed and offers fast, efficient fluidic performance at an economical price point.

Xover can be connected to 1/4-28 flat bottom tubing assemblies or the ports can be configured to meet your requirements. The valve has mounting holes for easy integration and an electrical connector with secondary retention for improved system reliability. Each Xover™ solenoid valve is 100% functionally tested for performance and is constructed from durable materials using the latest manufacturing techniques. Performance characteristics can be further optimized to meet specific application requirements.



FLOW SELECTION HAS NEVER BEEN EASIER. IT'S TIME TO XOVER.

THE LEE COMPANY

2 Pettipaug Road, P.O. Box 424, Westbrook, Connecticut 06498-0424 • Tel: 860-399-6281
WESTBROOK • LONDON • PARIS • FRANKFURT • MILAN • STOCKHOLM