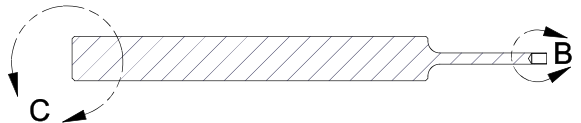
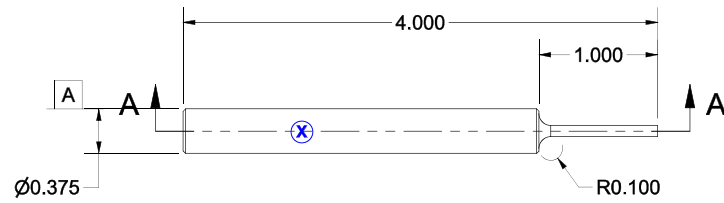
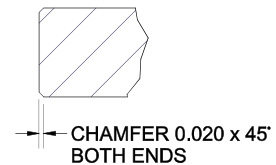


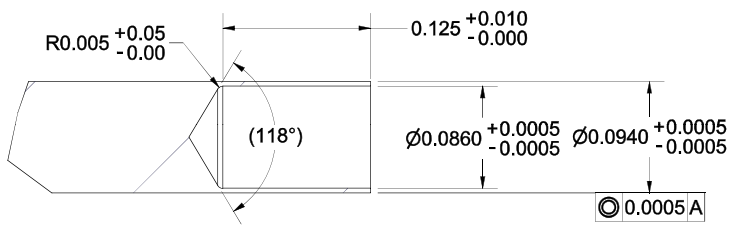
Revision Info.	
Rev	Change Description
B2	MINOR REVISION ~ Added concentricity tolerance



SECTION A-A
SCALE 1 : 1




DETAIL C
SCALE 2 : 1



DETAIL B
SCALE 10 : 1

- NOTES:
 1. REMOVE ALL BURRS AND SHARP EDGES.
 2. MARK WITH PART NUMBER AND REVISION LETTER. (X)

THIRD ANGLE PROJECTION	UNLESS OTHERWISE SPECIFIED EXTERNAL RADIUS R INTERNAL FILLET R SURFACE FINISH MAXIMUM 63	Author Vernon, Jon Engineer D. Courcey Origination Date 1/14/2004 Modification Date 8/16/2023	 The Lee Company Industrial Microhydraulics Group Technical Center Westbrook, CT 06498 / U.S.A.
CODE IDENT NO. OS730	CRITICAL CHARACTERISTICS	MATL. A2 Tool Steel H.T. Rc 50-60	
Sheet Size B	PROPRIETARY NOTICE <small>This document contains confidential, trade secret information which is proprietary to The Lee Company, and is authorized upon the express condition that neither it, nor any products, will be used directly or indirectly in any way detrimental to the interests of The Lee Company, such as disclosure to others or replication of our products, and in violation of 18 U.S.C. 1905 (TRA), 18 U.S.C. 103 (FOIA), E.O. 12860 of 6/23/87, 18 U.S.C. 1832, and C.O.S.A. (CT) Chapter 665 sec. 35-36 from 35-38.</small>	FINISH DIMENSIONS ARE IN INCHES TOLERANCES 2PL ±.01 3PL ±.003 4PL ±.0010 ANG ±2*	TITLE: INSTALLATION TOOL, LEE CHECK, 2.5 mm, PRESS-IN, REVERSE -FMF / Used On- The Lee Company PART # CCRT0048048S REV. State Released SHEET 1 of 1 SCALE: 1:1