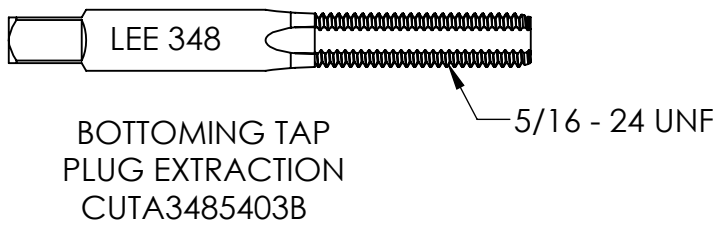
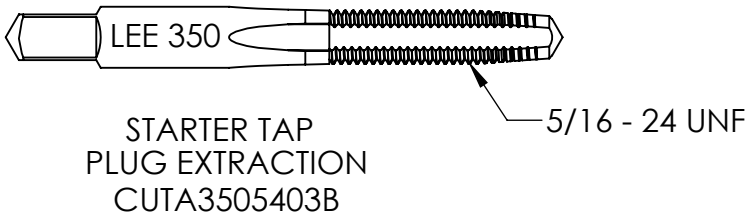
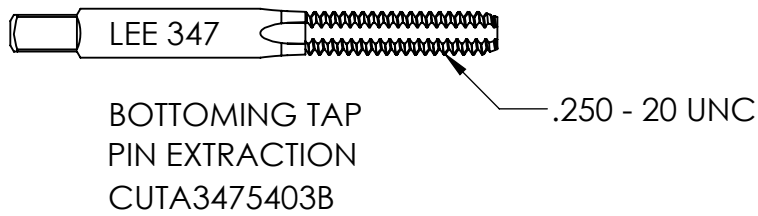
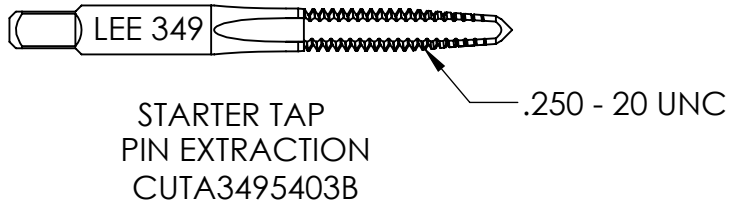
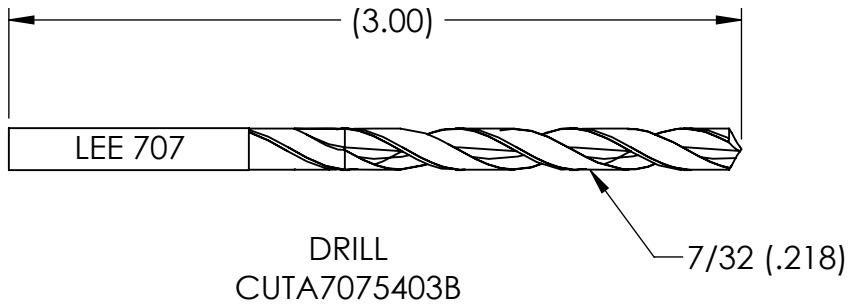
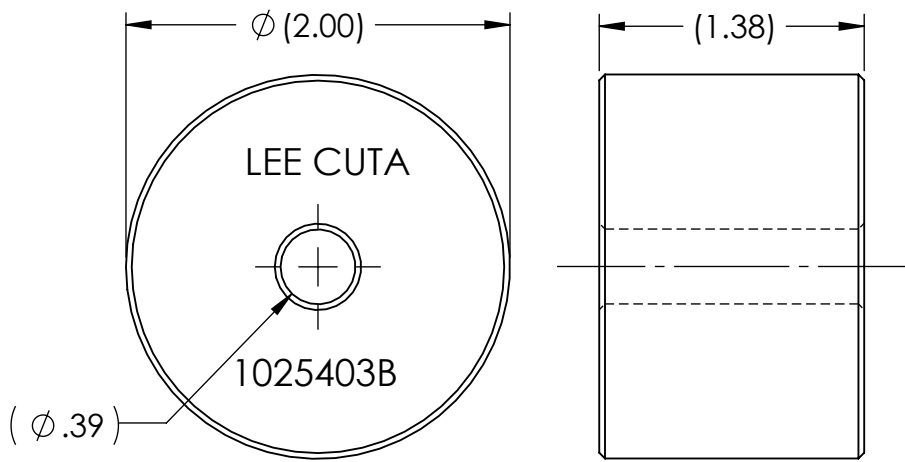
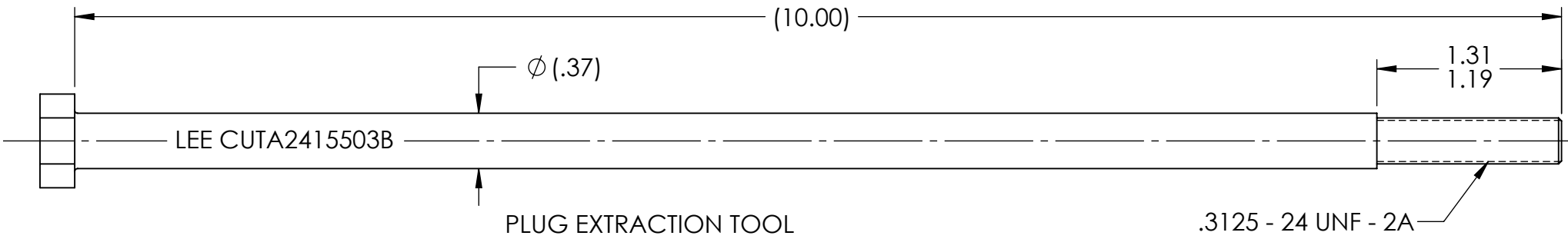
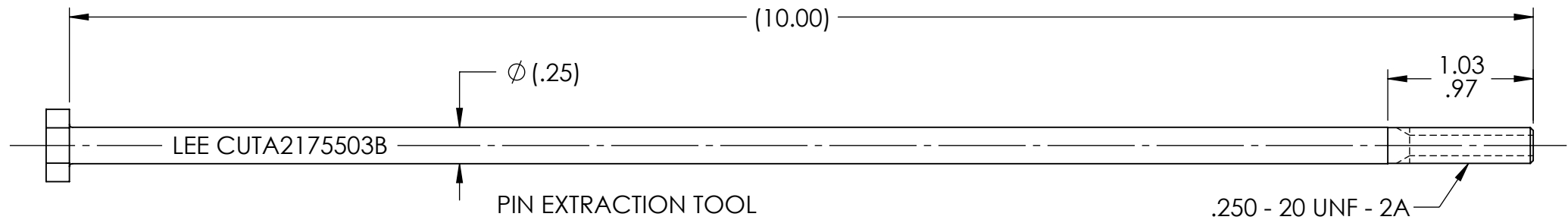


CUTA3430113B

REVISIONS			
REV	DATE	BY	DESCRIPTION
A1	01-18-24	KD	INITIAL RELEASE



- NOTES:
- MINIMUM OF 4 THREADS OF ENGAGEMENT TO EXTRACT THE PIN AND PLUG.
 - EXTRACTION TOOL SET FOR PLGA3431350A AND PLGA3531350A.

WARNING-EXPORT CONTROLLED BY: EAR [50 USC 2401], THIS DRAWING: EAR99
PRODUCT/TECHNOLOGY CLASSIFICATION: EAR99/EAR99

PROPRIETARY NOTICE
This document contains confidential, trade secret information which is proprietary to The Lee Company, and is submitted upon the express condition that neither it, nor our products, will be used directly or indirectly in any way detrimental to the interests of The Lee Company, such as disclosure to others or replication of our products, and/or in violation of 18 U.S.C. 1905 (TSA), 5 U.S.C. 552 (FOIA), E.O. 12600 of 6/23/87, 18 U.S.C. 1832, and C.G.S.A. (CT) Chapter 625 sec. 35-50 thru 35-58.

CUTD3430113
REFERENCE

DWG. NO. CUTA3430113B	NOTES AND DIMENSIONS SHOWN HERE ON ARE FOR INSPECTION IDENTIFICATION ONLY. ALL MANUFACTURING RIGHTS RESERVED.	DRAWN	K D	01-18-24	LEE TOOL SET, MP35N EXTRACTION, .343			
		CHK'D	B W	10-04-24				
		APP'D	R M	10-11-24				
	UNLESS OTHERWISE SPECIFIED EXT. COR. BREAK: INTERNAL FILLET R: SURFACE FINISH ALL OVER DIMENSIONS ARE IN INCHES TOLERANCES 2 PLACES 3 PLACES ANGLES ±.015 ±.005 ±5°	MAT'L			 THE LEE COMPANY WESTBROOK, CT 06498			
		H.T.						
		FINISH			SIZE B	CAGE CODE 92555	DWG. NO. CUTA3430113B	REV A
					SCALE NONE		SHEET 1 OF 1	