

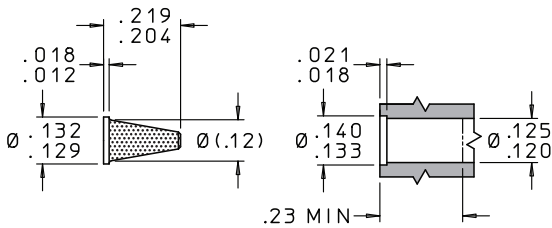
# LO-LOHM HI-BAR® SAFETY SCREENS

The Lee Company now offers a complete line of flange mount, HI-BAR Safety Screens designed for high flow applications. Optimized for flow, these Lo-Lohm Safety Screens reduce pressure drop by 70% on average as compared to traditional HI-BAR designs. These high strength screens feature a robust, single-piece construction that can withstand pressure differentials up to 7500 psid without rupture.

Lo-Lohm HI-BAR Safety Screens are available in six different flange sizes ranging from 0.130 to 0.670 of an inch in diameter, and eight different hole sizes ranging from 0.002 to 0.020 of an inch in diameter.

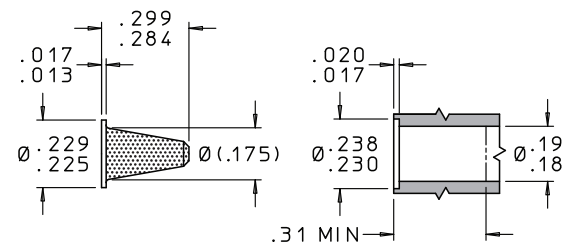
All Lee Safety Screens are precision cleaned and packaged before shipment. Special designs are available upon request. Contact your local Lee Sales Engineer for additional information or technical assistance.

- Average of 70% reduction in pressure drop
- High strength, design optimized for high flow applications
- Rugged, single-piece construction made entirely of 465 CRES
- Burst/collapse pressure: 7500 psid
- 48 standard versions for design flexibility
- Hole sizes from 0.002 to 0.020 of an inch
- Custom designs available



## 130 FLANGE MOUNT SCREEN

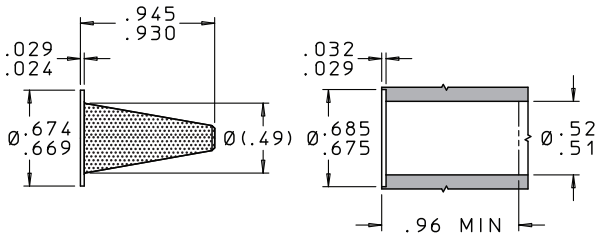
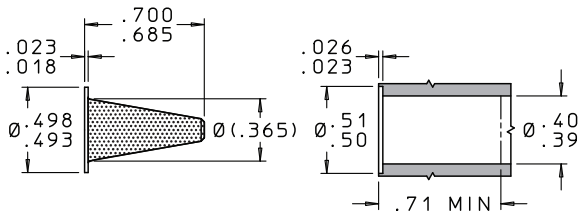
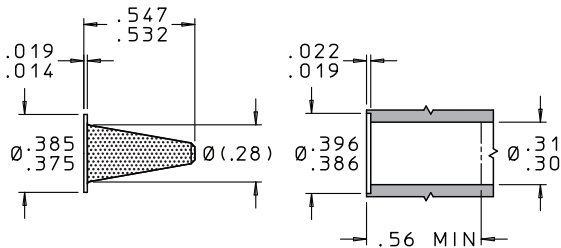
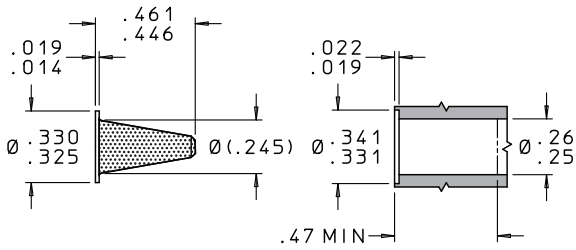
LEE PART NUMBER	HOLE SIZE (in.)	HOLE SIZE (µm)	OPEN AREA (in. <sup>2</sup> )	TOTAL AREA (in. <sup>2</sup> )	NUMBER OF HOLES	BURST / COLLAPSE PRESSURE (psid min.)	ROB** NUMBER	LOHM* RATE (nom.)
FSHF1305005A	0.002	50	0.004	0.04	1160	7500	0.1	180
FSHF1305007A	0.003	75	0.006	0.04	850	7500	0.3	160
FSHF1305010A	0.004	100	0.007	0.04	570	7500	0.6	150
FSHF1305015A	0.006	150	0.007	0.04	260	7500	1.3	140
FSHF1305020A	0.008	200	0.007	0.04	150	7500	2.5	140
FSHF1305025A	0.010	250	0.007	0.04	90	7500	4.0	140
FSHF1305040A	0.015	380	0.007	0.04	35	7500	10	140
FSHF1305050A	0.020	500	0.007	0.04	20	7500	23	140



## 230 FLANGE MOUNT SCREEN

LEE PART NUMBER	HOLE SIZE (in.)	HOLE SIZE (µm)	OPEN AREA (in. <sup>2</sup> )	TOTAL AREA (in. <sup>2</sup> )	NUMBER OF HOLES	BURST / COLLAPSE PRESSURE (psid min.)	ROB** NUMBER	LOHM* RATE (nom.)
FSHF2305005A	0.002	50	0.014	0.093	4040	7500	0.4	70
FSHF2305007A	0.003	75	0.015	0.093	2120	7500	0.8	60
FSHF2305010A	0.004	100	0.024	0.093	1850	7500	1.9	50
FSHF2305015A	0.006	150	0.024	0.093	840	7500	4.3	50
FSHF2305020A	0.008	200	0.024	0.093	500	7500	8.4	50
FSHF2305025A	0.010	250	0.024	0.093	310	7500	14	50
FSHF2305040A	0.015	380	0.025	0.093	140	7500	40	50
FSHF2305050A	0.020	500	0.025	0.093	80	7500	95	50

# LO-LOHM HI-BAR® SAFETY SCREENS



Products not drawn to scale.

\* The Lohm is a measure of flow resistance. Example: One Lohm will permit a flow of 100 GPM of water at 25 psid at 80°F.

\*\* The ROB Number indicates the relative resistance to blockage when comparing one screen to another. The higher the ROB Number, the greater the resistance to blockage.

Additional information can be found at [www.theleeco.com](http://www.theleeco.com) or by contacting your local Lee Sales Engineer.

## 330 FLANGE MOUNT SCREEN

LEE PART NUMBER	HOLE SIZE (in.)	HOLE SIZE (µm)	OPEN AREA (in. <sup>2</sup> )	TOTAL AREA (in. <sup>2</sup> )	NUMBER OF HOLES	BURST / COLLAPSE PRESSURE (psid min.)	ROB** NUMBER	LOHM* RATE (nom.)
FSHF3305005A	0.002	50	0.023	0.20	6640	7500	0.7	35
FSHF3305007A	0.003	75	0.030	0.20	4200	7500	1.5	30
FSHF3305010A	0.004	100	0.048	0.20	3800	7500	4.0	25
FSHF3305015A	0.006	150	0.048	0.20	1690	7500	8.6	25
FSHF3305020A	0.008	200	0.048	0.20	960	7500	16	25
FSHF3305025A	0.010	250	0.048	0.20	620	7500	27	25
FSHF3305040A	0.015	380	0.055	0.20	310	7500	90	25
FSHF3305050A	0.020	500	0.055	0.20	170	7500	200	25

## 380 FLANGE MOUNT SCREEN

LEE PART NUMBER	HOLE SIZE (in.)	HOLE SIZE (µm)	OPEN AREA (in. <sup>2</sup> )	TOTAL AREA (in. <sup>2</sup> )	NUMBER OF HOLES	BURST / COLLAPSE PRESSURE (psid min.)	ROB** NUMBER	LOHM* RATE (nom.)
FSHF3805005A	0.002	50	0.033	0.28	9500	7500	1.0	25
FSHF3805007A	0.003	75	0.041	0.28	5800	7500	2.1	20
FSHF3805010A	0.004	100	0.065	0.28	5150	7500	5.4	15
FSHF3805015A	0.006	150	0.065	0.28	2290	7500	11	15
FSHF3805020A	0.008	200	0.065	0.28	1300	7500	22	15
FSHF3805025A	0.010	250	0.065	0.28	830	7500	37	15
FSHF3805040A	0.015	380	0.075	0.28	420	7500	120	15
FSHF3805050A	0.020	500	0.075	0.28	240	7500	285	15

## 495 FLANGE MOUNT SCREEN

LEE PART NUMBER	HOLE SIZE (in.)	HOLE SIZE (µm)	OPEN AREA (in. <sup>2</sup> )	TOTAL AREA (in. <sup>2</sup> )	NUMBER OF HOLES	BURST / COLLAPSE PRESSURE (psid min.)	ROB** NUMBER	LOHM* RATE (nom.)
FSHF4955005A	0.002	50	0.05	0.48	14,400	7500	1.6	18
FSHF4955007A	0.003	75	0.06	0.48	8500	7500	3.2	14
FSHF4955010A	0.004	100	0.09	0.48	7200	7500	7.6	10
FSHF4955015A	0.006	150	0.09	0.48	3200	7500	16	10
FSHF4955020A	0.008	200	0.09	0.48	1790	7500	30	10
FSHF4955025A	0.010	250	0.09	0.48	1200	7500	53	10
FSHF4955040A	0.015	380	0.11	0.48	650	7500	190	10
FSHF4955050A	0.020	500	0.11	0.48	340	7500	400	10

## 670 FLANGE MOUNT SCREEN

LEE PART NUMBER	HOLE SIZE (in.)	HOLE SIZE (µm)	OPEN AREA (in. <sup>2</sup> )	TOTAL AREA (in. <sup>2</sup> )	NUMBER OF HOLES	BURST / COLLAPSE PRESSURE (psid min.)	ROB** NUMBER	LOHM* RATE (nom.)
FSHF6705005A	0.002	50	0.09	0.90	26,200	7500	3.0	10
FSHF6705007A	0.003	75	0.11	0.90	15,900	7500	6.0	10
FSHF6705010A	0.004	100	0.17	0.90	13,520	7500	14	6
FSHF6705015A	0.006	150	0.17	0.90	6000	7500	30	6
FSHF6705020A	0.008	200	0.17	0.90	3300	7500	55	6
FSHF6705025A	0.010	250	0.17	0.90	2200	7500	98	6
FSHF6705040A	0.015	380	0.21	0.90	1200	7500	350	6
FSHF6705050A	0.020	500	0.21	0.90	660	7500	785	6

