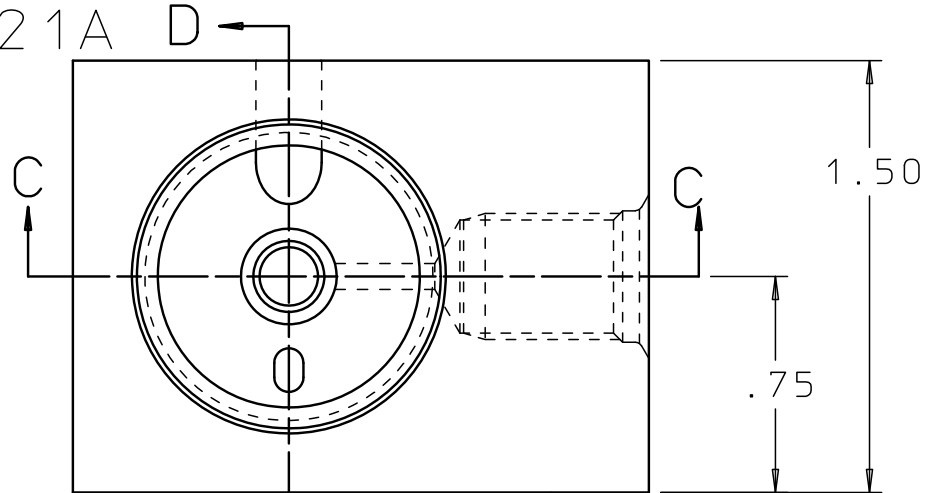
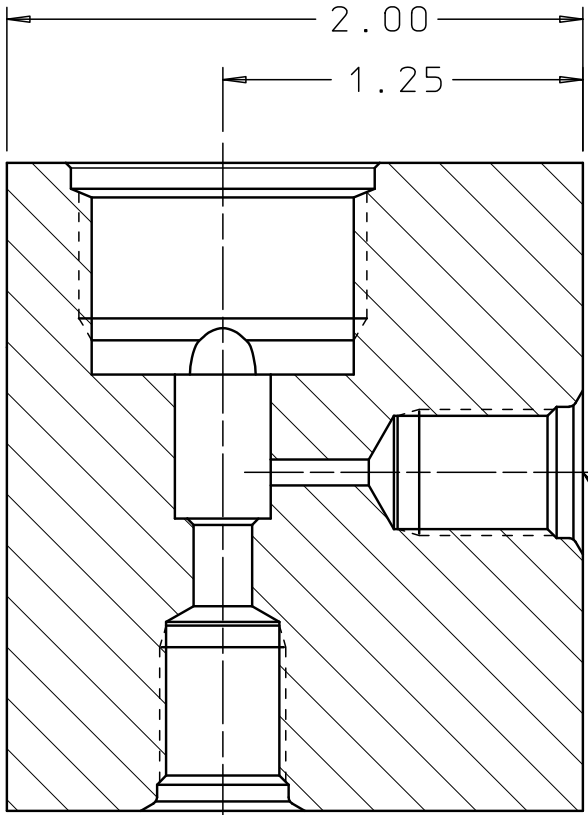


CUTA3320121A



MARKING  
"LEE CUTA3320121A"



PRESSURE  
PORT

CONTROL  
PORT

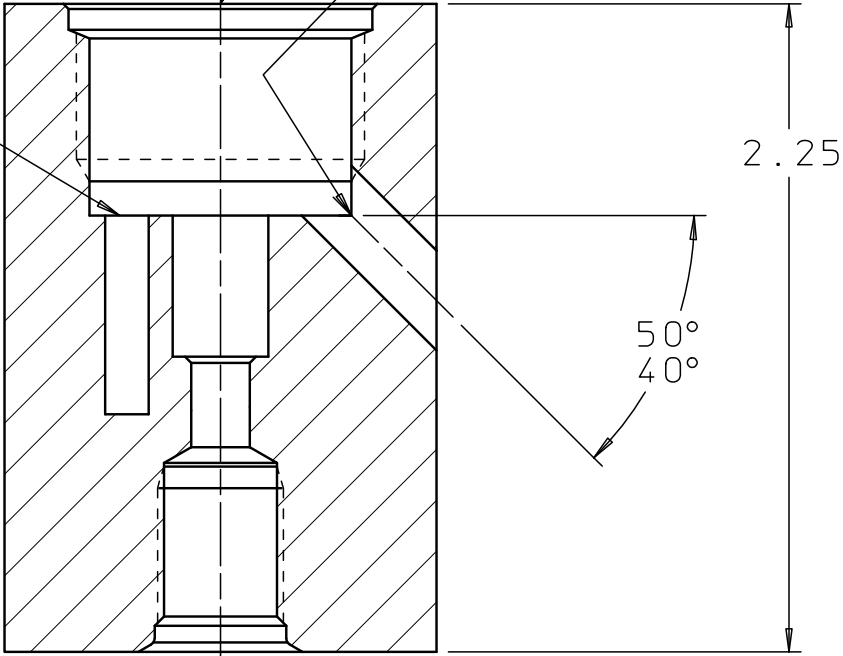
2X AS5202-4

SECTION C-C

LOCATING SLOT

INSTALLATION HOLE FOR LEE  
PILOT ACTUATED DUAL COIL  
HI-FLOW SOLENOID VALVE  
(1.00-12 UNF-3B)

LEAD WIRE  
PASSAGEWAY



SECTION D-D

NOTES:  
1. MAXIMUM PRESSURE 7500 PSI.

PROPRIETARY ITEM

This document contains proprietary information and is submitted upon the express condition that the information contained herein will not be used directly or indirectly in any way detrimental to the interests of The Lee Company, and/or in violation of regulation DAR 7-104.9(a)(1 July 1974), et seq.

SECTION C-C

CUTD0407310

REFERENCE

DWG NO:  
CUTA3320121A

NOTES AND DIMENSIONS SHOWN HERE ON  
ARE FOR INSPECTION IDENTIFICATION ONLY.  
ALL MANUFACTURING RIGHTS RESERVED.

EXTERNAL CORNER RAD:  
INTERNAL FILLET RAD:

SURFACE FINISH ✓ ALL OVER  
DIMENSIONS ARE IN INCHES

TOLERANCES  
2 PLACES 3 PLACES ANGLES  
±.015 ±.005 ±5°

DRAWN BY: H M 08-23-01

CHK'D BY: L B 08-27-01

APP'D BY: B B 09-04-01

MAT: 2024-T351  
ALUMINUM

H.T.:

FINISH: CLEAR ANODIZE

TEST FIXTURE FOR LEE PILOT ACTUATED  
2-WAY DUAL COIL HI-FLOW SOLENOID VALVE



THE LEE COMPANY  
WESTBROOK, CT 06498

SIZE	CAGE CODE	DWG NO.	REV
B	92555	CUTA3320121A	A

DWG SCALE: 1.5:1 SHEET 1 OF 1