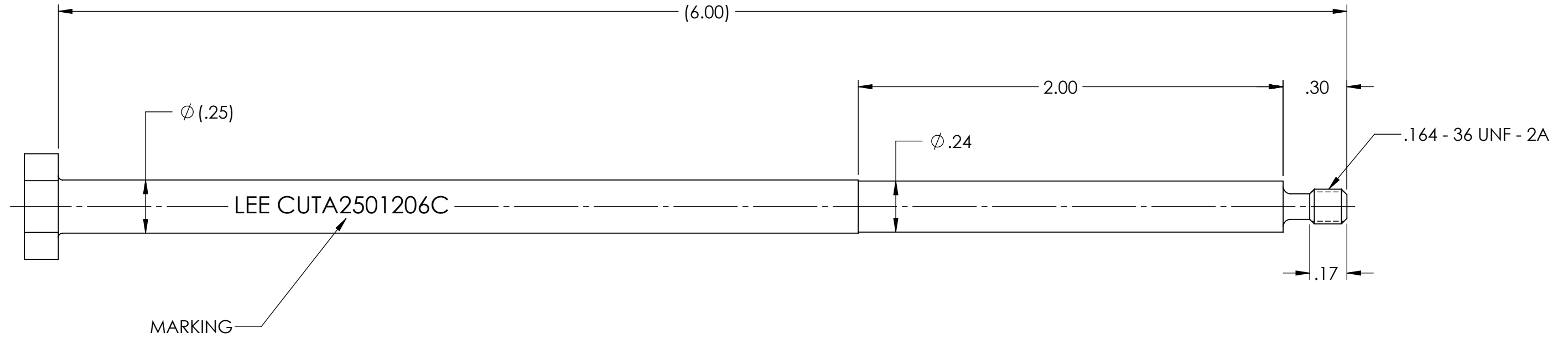


CUTA2501206C

REVISIONS			
REV	DATE	BY	DESCRIPTION
A1	06-21-89	EJ	INITIAL RELEASE
2	07-28-10	KD	REMOVED REV LETTER FROM MARKING.
B1	07-28-10	KD	REMOVED HEX. ADDED 2 FLATS.
2	06-26-23	KD	UPDATED TO NEW FORMAT. NO CHANGES.



WARNING-EXPORT CONTROLLED BY EAR [50 USC 2401], ECCN=EAR99

PROPRIETARY NOTICE

This document contains confidential, trade secret information which is proprietary to The Lee Company, and is submitted upon the express condition that neither it, nor our products, will be used directly or indirectly in any way detrimental to the interests of The Lee Company, such as disclosure to others or replication of our products, and/or in violation of 18 U.S.C. 1905 (TSA), 5 U.S.C. 552 (FOIA), E.O. 12600 of 6/23/87, 18 U.S.C. 1832, and C.G.S.A. (CT) Chapter 625 sec. 35-50 thru 35-58.

CUTD0100890
REFERENCE

DWG. NO. CUTA2501206C	NOTES AND DIMENSIONS SHOWN HERE ON ARE FOR INSPECTION IDENTIFICATION ONLY. ALL MANUFACTURING RIGHTS RESERVED.			DRAWN	E J	08-21-1989	LEE BODY TOOL, INSTALLATION/EXTRACTION		
	UNLESS OTHERWISE SPECIFIED EXT. COR. BREAK: INTERNAL FILLET R: SURFACE FINISH ALL OVER DIMENSIONS ARE IN INCHES TOLERANCES 2 PLACES 3 PLACES ANGLES $\pm .015$ $\pm .005$ $\pm 5^\circ$			CHK'D	P C	08-22-1989			
				MATL			APP'D	JCD	08-23-1989
	FINISH						H.T.		
SCALE NONE						B	92555	CUTA2501206C	B
			SHEET 1 OF 1						