

# SPOTLIGHT ON INNOVATION



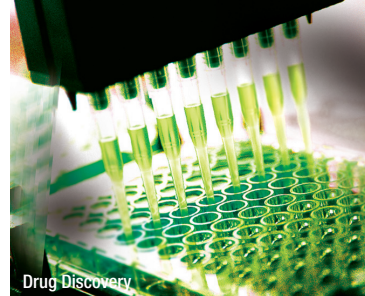
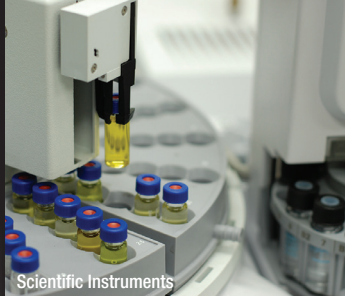
## PERFORMANCE

- Maintenance Free Design
- Wide Range of Dispense Volumes Available: 50, 250, 1000 and 3000 µl
- High Dispense Accuracy and Repeatability
- Home Sensor and Encoder Options Available
- 10 Million Cycle Life

## APPLICATIONS

- Reagent Dispense
- Sample Preparation
- Wash Systems
- In Vitro Diagnostics
- Environmental Analysis
- Mass Spectrometry
- Gene Sequencing
- Analytical Instruments

[www.theleeco.com/lpd](http://www.theleeco.com/lpd)

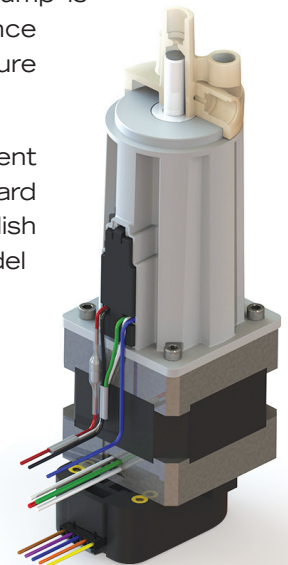


# LPD SERIES PRECISION DISPENSE PUMP

The Lee Company's LPD Series Precision Dispense Pumps are stepper motor driven, positive displacement pumps offering unparalleled reliability and performance. Featuring a compact, lightweight, maintenance free design, the pumps can be positioned where the fluidic requirements dictate, regardless of accessibility needs.

The LPD pumps were designed to offer greater design flexibility and significant cost savings to the medical and scientific industries. A dispense pump can be the most essential component in a fluidic system, especially when dispense accuracy and precision are critical. Each LPD pump is 100% functionally tested for performance and designed using materials that will ensure consistent long-term operation.

LPD dispense pumps are offered in two different models – standard and high performance. The standard model is equipped with a home sensor to establish end of stroke, whereas the high performance model includes a home sensor and an optical motor encoder for applications requiring feedback on piston movement. Performance characteristics can be optimized to meet specific application requirements.



## RELIABLE PERFORMANCE AND SIGNIFICANT COST SAVINGS IN A COMPACT, LIGHTWEIGHT PACKAGE.

### THE LEE COMPANY

2 Pettipaug Road, P.O. Box 424, Westbrook, Connecticut 06498-0424  
Tel: 860-399-6281 • Fax: 860-399-7037 • [inquiry@theleeco.com](mailto:inquiry@theleeco.com)